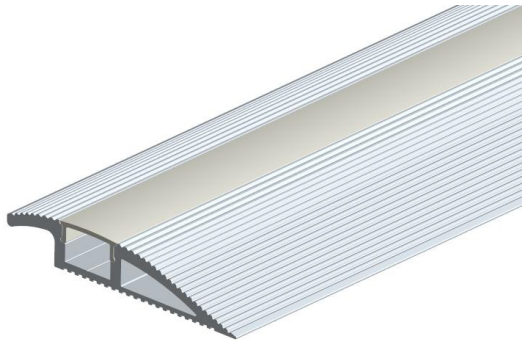


INSTALLATION GUIDE

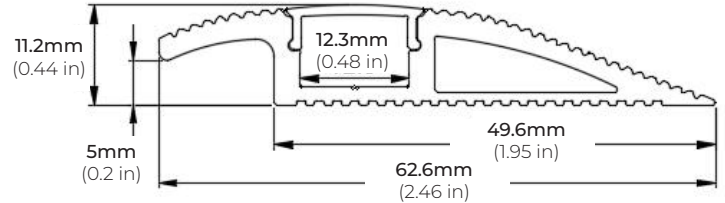


PRE-INSTALLATION

Surface Mount

Disconnect power source prior to installation.

DIMENSIONS



SAFETY

Read all instructions before installation.

These products may represent a possible shock or fire hazard if improperly installed.

Do not look directly into light.

This fixture is only suitable for indoor installation.



Product should be installed by a qualified electrician.



Product should be installed in accordance with these instructions and current electrical codes.

INSTALLATION

STEP 1

Attach the end caps onto each end of the profile. (Figure 1A)

Secure the profile into the carpet. (Figure 1B)

STEP 2

Peel the adhesive backing of the LED strip and install onto the channel. (Figure 2)

Then, carefully snap the lens back in place on the aluminum channel. (Figure 3)

