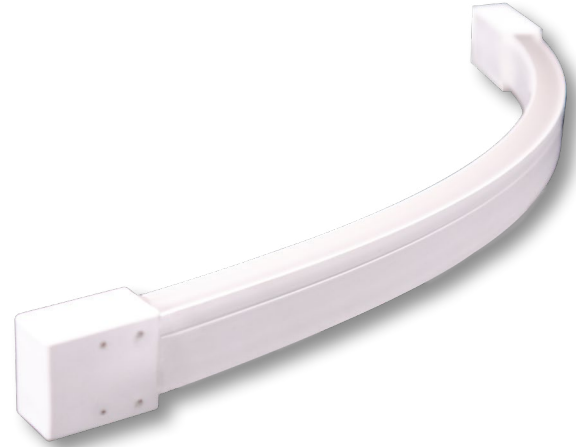


# LNHV40

## NEONFLEX 120V

Project \_\_\_\_\_  
Location \_\_\_\_\_  
Quote/ Ref # \_\_\_\_\_

**LNHV40** is a 120V, high performance, flexible LED fixture, designed as a neon replacement without the need for an external power supply. Suitable for indoor and outdoor applications, the LNHV40 easily bends around contours and tight curves without being damaged.



### SPECIFICATIONS

POWER CONSUMPTION	4W per foot
LUMEN OUTPUT	130Lm/ Ft.
CRI	95+
COLOR TEMPERATURE	27K/ 30K/ 35K/ 40K/ 50K
DIMMING	ELV/ TRIAC
MAXIMUM RUN LENGTH	164Ft.
CUTTING POINT	Every 4 in.
OPERATING VOLTAGE	120V
STORAGE TEMPERATURE	-20 ~ 60°C (-4 ~ 140°F)
OPERATING TEMPERATURE	-20 ~ 42°C (-4 ~ 107°F)
BEAM ANGLE	120°
BENDING DIAMETER	6.9"
IP RATING	IP65 Outdoor/ Wet Location
CERTIFICATIONS	ETL, RoHS
LUMEN MAINTENANCE	50,000 Hrs.

### FEATURES

- 120° Light Source
- 120VAC AC Tape
- ELV/ TRIAC Dimming
- UV Resistant
- IP65
- ETL (US and Canada)

\* This product is factory-cut only. Do not field modify.



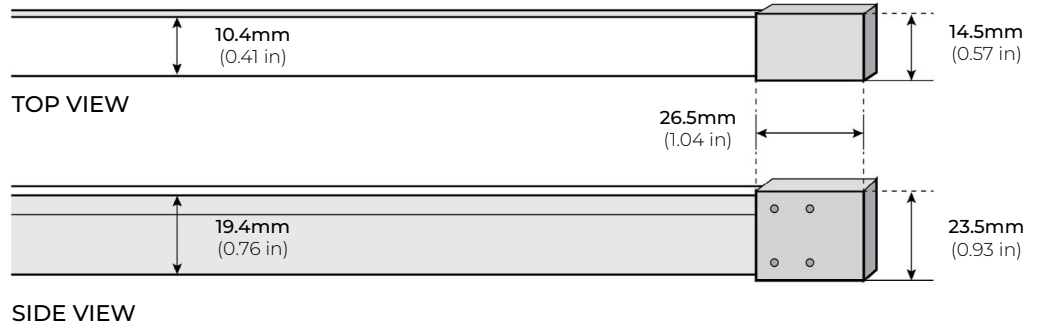
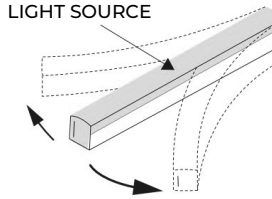
MODEL	LENS	LIGHT SURFACE	COLOR TEMP	VOLTAGE	LENGTH	POWER FEED	POWER FEED LENGTH
LNHV40	F Flat	HB Horizontal Bend	27K 2700K	120V 120 Volts	Per Foot Per Foot	IP65EF End Feed	HW36 36 Inch Power Feed
			30K 3000K				HW120 120 Inch Power Feed
			35K 3500K				HWXX Custom Length Power Feed
			40K 4000K				
			50K 5000K				

# LNHV40

NEONFLEX 120V

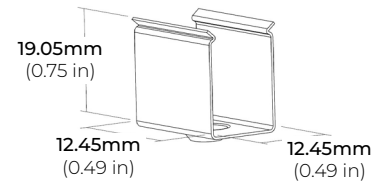
## DIMENSIONS

### HORIZONTAL BEND

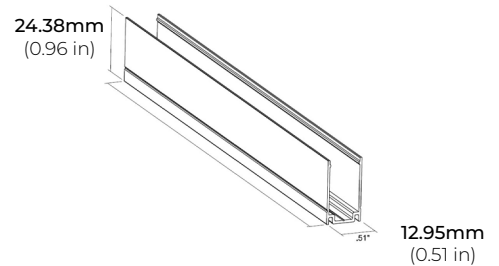


## ACCESSORIES

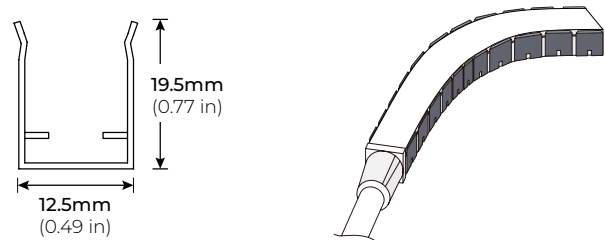
LNHV40-AC2  
MOUNTING BRACKET  
12.45 X 12.45 X 19.05mm



LNHV40-AC39  
39" ALUMINUM PROFILE  
12.95 X 24.38mm



LNHV40-FX39  
39" FLEXIBLE PROFILE  
12.5 X 19.5mm



## IP65 POWER FEED

IP65EF  
END FEED

