

IGU-200TL

TRIMLESS IN-GROUND LINEAR UPLIGHT

Project _____
Location _____
Quote/ Ref # _____

IGU-200TL is a trimless in-ground linear uplight featuring multiple beam angle options including long, narrow pattern and assymetric optic. Designed for in-ground/recessed installations in concrete or lawns, this fixture is ideal for wall washing and illuminating ground mounted signs and linear objects.



SPECIFICATIONS

INPUT VOLTAGE	120-277V AC
POWER CONSUMPTION	14.6W/ Ft.
LUMEN OUTPUT	85 Lm/ W
COLOR TEMPERATURE	27K / 30K / 35K / 40K / 60K / Red / Green / Blue / Amber / Yellow / RGB / RGBW / RGBA
BEAM ANGLE	8° / 15° / 30° / 45° / 60° / 10° x 40° / 20° x 60° / Asymmetric / Frosted Lens (120°)
CRI	80+, 90 (optional, consult factory)
DIMMING	0-10V, DMX, DALI and Casambi
HOUSING	Extruded Anodized Aluminum
COVER	Tempered Glass
TOP COVER FRAME	Stainless Steel 316
OPERATING TEMPERATURE	-4°F (-20°C) ~ 122°F (50°C)
STORAGE TEMPERATURE	-4°F (-20°C) ~ 140°F (60°C)
IP RATING	IP67
MAX LOAD	1000 lbs (500 kgs)
CERTIFICATIONS	3G Vibration, RoHS, ETL Listed
LUMEN MAINTENANCE	50,000 Hrs.
IMPACT RATING	IK09
WEIGHT	1.46 kg/ Ft. (3.22 lbs)

FEATURES

- 120 - 277V AC
- Trimless Frame
- Max load 1000 lbs (500kgs)
- Built-in Driver
- Stainless Steel Frame
- Clear Tempered Glass
- Recessed Housing Included
- 3G Vibration

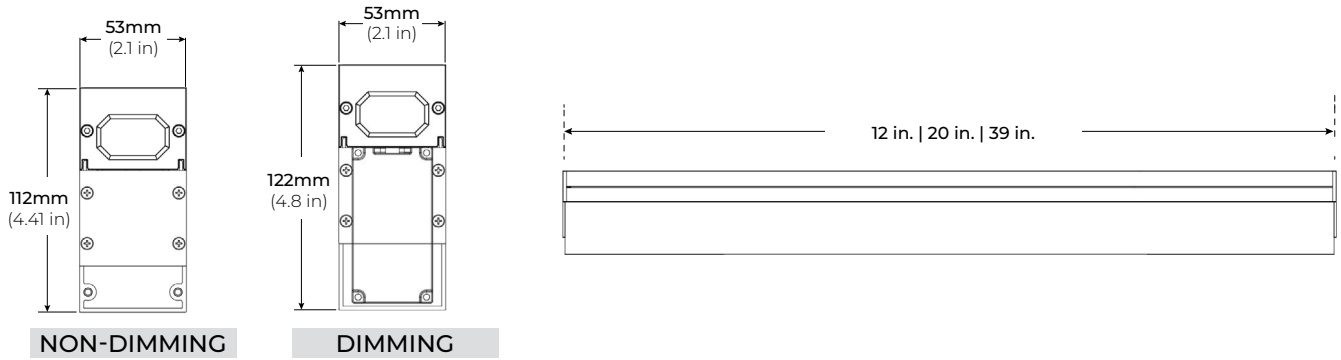


MODEL	LENGTH	COLOR TEMPERATURE			OPTIC	FINISH	VOLT	CONTROL	OPTIONS		
IGU200TL	12 12 in. (14.6W)	27K 2700K	RD Red	RGB RGB	18/27K 1800K/ 2700K	8 8°	1040 H10° x V40°	TG Titanium Gray	UNV 120-277V	NDM No Dimming	HC Honeycomb Louver
	20 20 in. (24W)	30K 3000K	GR Green	RGBW RGBW	18/30K 1800K/ 3000K	15 15°	2060 H20° x V60°	BK Black		D10 0-10V Dimming	GS Anti-Glare Shield
		35K 3500K	BL Blue	RGBA RGBA (Amber)		30 30°	ASY Asymmetric	WH White			
	40 40 in. (48W)	40K 4000K	AM Amber			45 45°	FR Frosted Lens (120°)			DMX DMX	
		60K 6000K	YE Yellow			60 60°				DALI Dali	
									CAS Casambi		

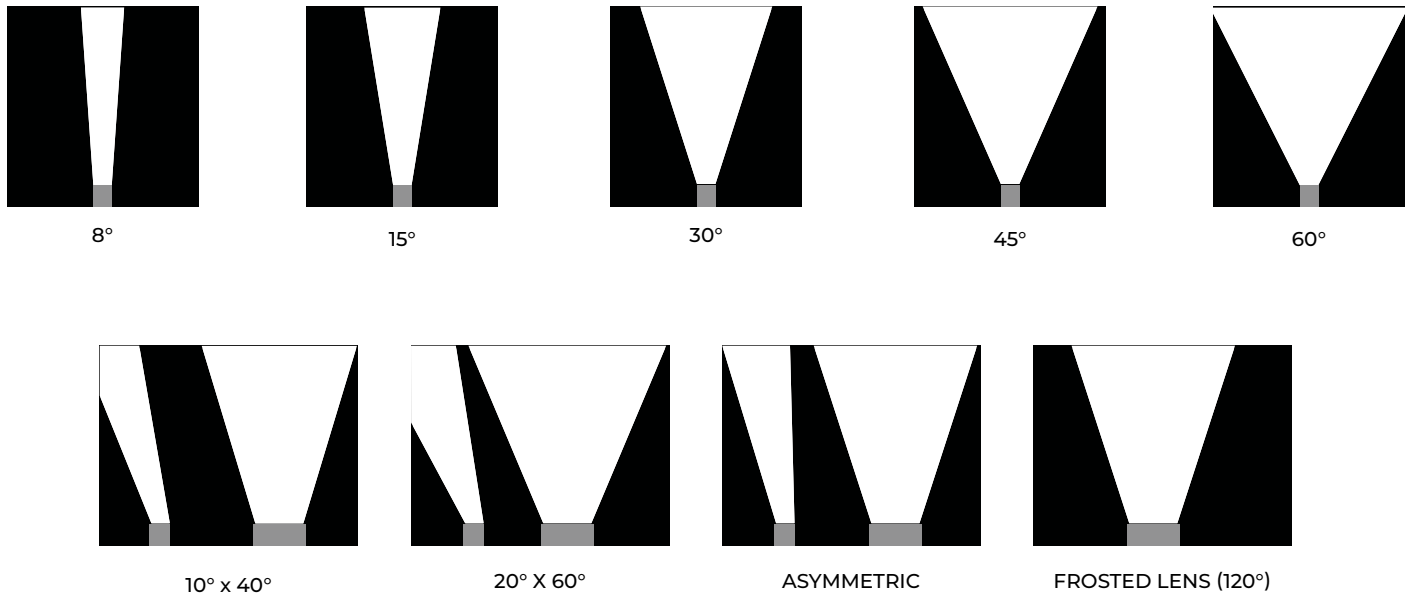
IGU-200TL

TRIMLESS IN-GROUND LINEAR UPLIGHT

DIMENSIONS



OPTICS

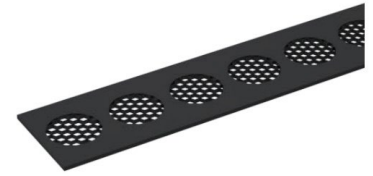


IGU-200TL

TRIMLESS IN-GROUND LINEAR UPLIGHT

OPTIONAL ACCESSORIES

IGU200TL-HC
HONEYCOMB LOUVER



IGU200TL-GS
ANTI-GLARE SHIELD



PRODUCT OVERVIEW

