

# ICON

## IP69K LINEAR LED LUMINAIRE

Project \_\_\_\_\_  
Location \_\_\_\_\_  
Quote/ Ref # \_\_\_\_\_

The **ICON** is a versatile linear luminaire engineered to withstand prolonged exposure to harsh environments. With an IP69K rating and a variety of color temperature and lens optic options, the ICON is an ideal solution for a wide range of applications.



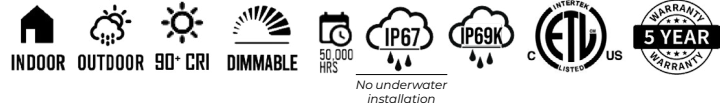
### SPECIFICATIONS

INPUT VOLTAGE	24V   120-277V
POWER CONSUMPTION	9W/ Ft.
LUMEN OUTPUT	810 Lm/ Ft.
CRI	90+
COLOR TEMPERATURE	30K/ 40K/ 50K
BEAM ANGLE	20°/ 30°/ 45°/ 20°x40°
DIMMING	0-10V
MAX RUN	Linkable up to 24 Fixtures (12") Linkable up to 12 Fixtures (24") Linkable up to 6 Fixtures (48")
OPERATING TEMPERATURE	-4°F (-20°C) ~ 113°F (45°C)
IP RATING	IP67/ 69K, Harsh Environment
LUMEN MAINTENANCE	50,000 Hrs.

### FEATURES

- 90+ CRI
- IP67/ 69K Rated
- Durable, stainless steel
- Proprietary Optical Technology
- Facade Wall Washing
- Quick and Easy Installation

\* Product is not suitable for underwater installation.

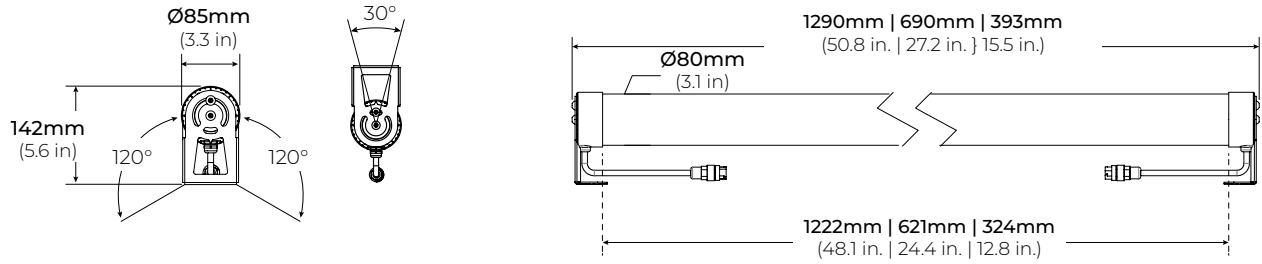


MODEL	LENGTH	COLOR TEMP	OPTICS	FINISH	VOLTAGE	DIMMING
ICON	<b>12</b> 12.8" (9W)	<b>30K</b> 3000K	<b>20</b> 20°	SI Silver	<b>24V*</b> 24V	<b>ND</b> No Dimming
	<b>24</b> 24.4" (18W)	<b>40K</b> 4000K	<b>30</b> 30°		<b>UNV</b> 120-277V	<b>D10</b> 0-10V Dimming (120-277V)
	<b>48</b> 48.1" (36W)	<b>50K</b> 5000K	<b>45</b> 45°			
			<b>2040</b> 20° x 40°			

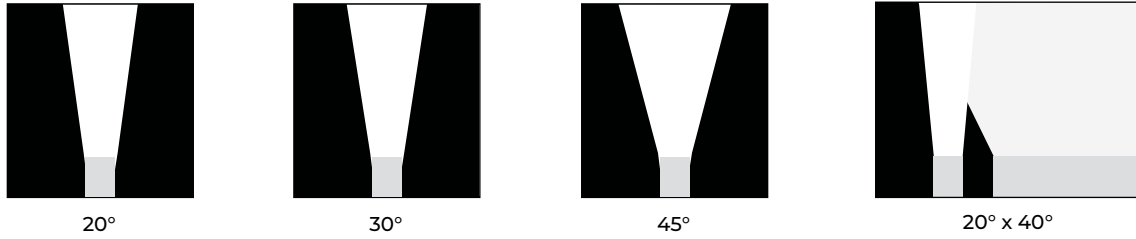
\* Remote Driver

## IP69K LINEAR LED LUMINAIRE

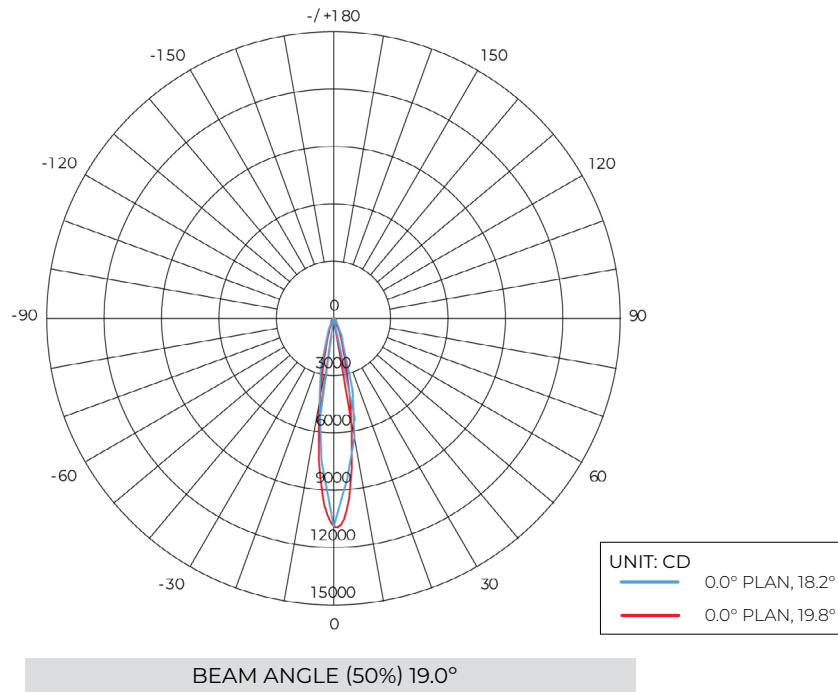
### DIMENSIONS



### OPTICS



### PHOTOMETRICS



## IP69K LINEAR LED LUMINAIRE

### COMPATIBLE ACCESSORIES

---

ICON-LNK-10  
ICON-LNK-36  
ICON-LNK-72  
10", 36", 72" LINK EXTENSION CABLE  
\*Sold Separately



---

ICON-HWC-72-BK  
72" HARDWIRE CABLE  
\*Sold Separately

