

LNT-45 BLACK

3.7W IP67/68 FLEXIBLE LED NEON SERIES

Project _____
Location _____
Quote/ Ref # _____

LNT-45 Black is a high performance flexible LED fixture designed as a neon replacement. Suitable for indoor and outdoor applications, the LNT-45 Black easily bends around contours and tight curves without being damaged. It allows for easy installation with its factory sealed terminators and self-locking male and female barrel connectors.



SPECIFICATIONS

INPUT VOLTAGE	24V DC Constant Voltage
POWER CONSUMPTION	3.7W per Ft.
LUMEN OUTPUT	21 Lm/ Ft.
CRI	85+
COLOR TEMPERATURE	22K / 27K / 30K / 35K / 40K / 50K
DIMMING/ CONTROL	MLV, ELV, 0-10 and TRIAC
MAXIMUM RUN LENGTH	32 Ft.
CUTTABLE	Every 55.6mm (2.19 in)
POWER FACTOR	≤ 1
STORAGE TEMPERATURE	-40°F (-40°C) to 140°F (60°C)
OPERATING TEMPERATURE	-40°F (-40°C) to 131°F (55°C)
BEAM ANGLE	160°
HUMIDITY	0-95% Non Condensing
IP RATING	IP67/ IP68
CERTIFICATIONS	UL Listed
LUMEN MAINTENANCE	50,000 Hrs.

FEATURES

- High color consistency
- Smooth illumination
- Black Protective Jacket
- Continuous run length up to 32 Ft.
- Waterproof, submersible under water
- Bottom, Side and End Feed options
- UL Listed (US and Canada)

*This product is factory-cut only. Do not field modify.

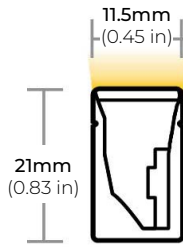


MODEL	LENS	COLOR TEMP	LENGTH (PF)	VOLTAGE	POWER FEED	FEED LENGTH
LNT-45BK	F Flat	22K 2700K	Please refer to pages 5-6 for exact lengths with corresponding ordering codes.	24 24V DC	BF Bottom Feed	HW3 3 Ft. Power Feed
		27K 2700K			SFL Side Feed Left	HW10 10 Ft. Power Feed
		30K 3000K			SFR Side Feed Right	HW15 15 Ft. Power Feed
		35K 3500K			EF End Feed	HW30 30 Ft. Power Feed
		40K 4000K				HW50 50 Ft. Power Feed
		50K 5000K				
		60K 6000K				

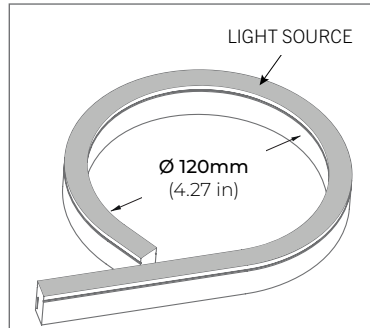
LNT-45 BLACK

3.7W IP67/68 FLEXIBLE LED NEON SERIES

DIMENSIONS

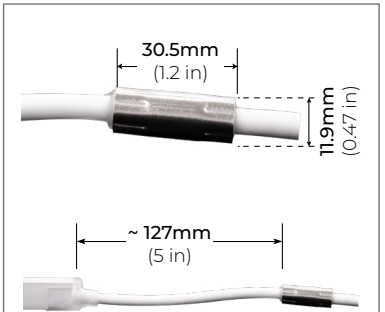


FLAT LENS



BEND DIAMETER

LED strip only bends along horizontal axis. Bending the LED strip vertically (perpendicular) to the light surface risks damage to the LED strip. Do **NOT** bend more than the indicated bend radius (shown above). Doing so will damage the LED strip.

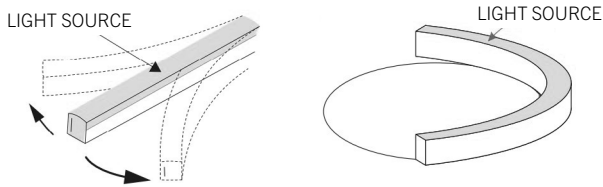


POWER FEED CHOKER

All CORE Lighting IP67/IP68 Neons include a choker that sits roughly 5" from the end of the Neon.

*Warranty is void if removed.

HORIZONTAL BEND



COMPATIBLE ACCESSORIES

SELF LOCKING ALUMINUM PROFILE

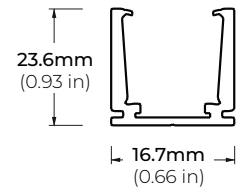
LNT45-AC2
1.38" PROFILE



LNT45-AC2

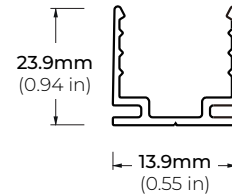


LNT45-AC39



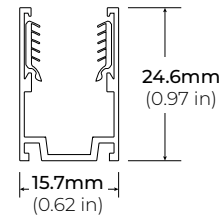
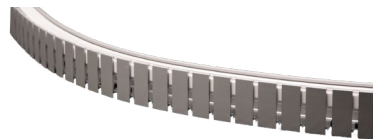
PLASTIC PROFILE

LNT45-PC39
39" PROFILE



FLEXIBLE ALUMINUM CHANNEL

LNT45-AFX
39" CHANNEL

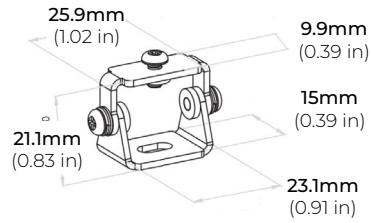


LNT-45 BLACK

3.7W IP67/68 FLEXIBLE LED NEON SERIES

COMPATIBLE ACCESSORIES

LNT45-BKT-ADJ
ADJUSTABLE BRACKET



RACEWAY PROFILE

LNT45-SMR-AC39-SI
39" PROFILE (SILVER)

LNT45-SMR-AC39-WH
39" PROFILE (WHITE)

*Made to Order.

LNT45-SMR-AC39-BK
39" PROFILE (BLACK)

*Made to Order.

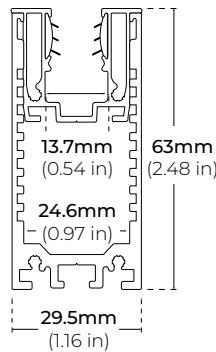
LNT45-SMR-EC
END CAPS

* Set of 2 (1 with Hole and 1 without Hole)

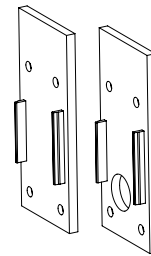
* Sold Separately

LNT45-SMR-SC
JOINER BRACKET

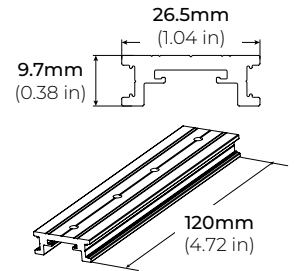
* Sold Separately



LNT45-SMR-AC39



LNT45-SMR-EC



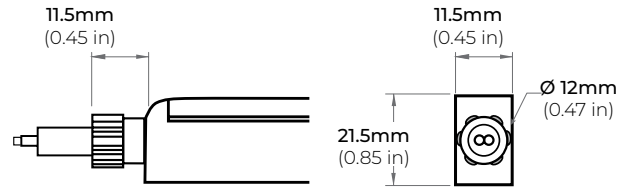
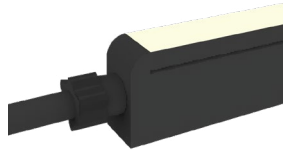
LNT45-SMR-JB

LNT-45 BLACK

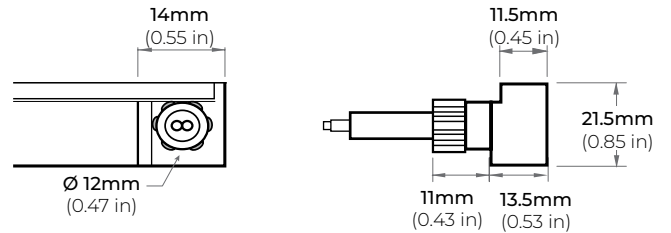
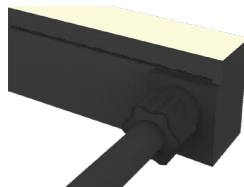
3.7W IP67/68 FLEXIBLE LED NEON SERIES

IP67/68 POWER FEED

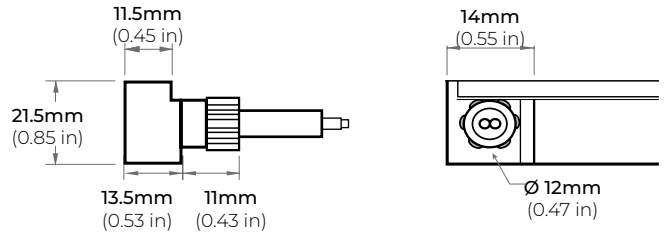
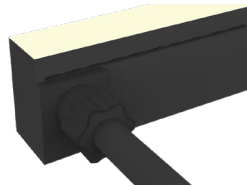
EF
END FEED



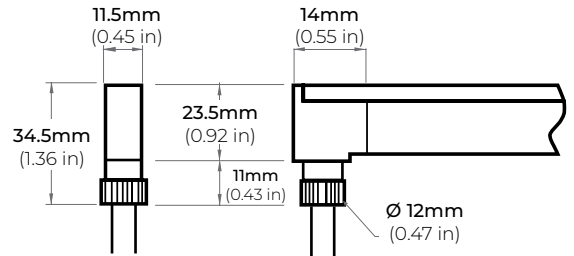
SFL
SIDE FEED LEFT



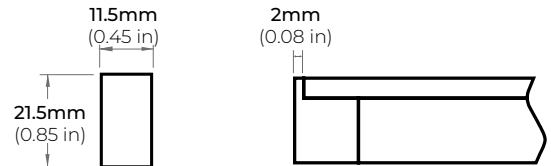
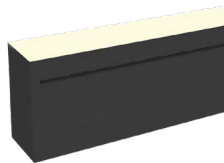
SFR
SIDE FEED RIGHT



BF
BOTTOM FEED



EC
END CAP



LNT-45 BLACK

3.7W IP67/68 FLEXIBLE LED NEON SERIES

CUTTING LENGTH CODES

LNT-45 Black is cuttable every 2.19" (5.6CM). Please refer to the chart below to determine actual lengths once LED is cut versus actual lengths required or specified.

Total Length Calculation = Order Code Length + End Feed option Length

Example: 33.95" Total Length = Order Code 15 (32.85") + (1.1") End Feed

POWER FEED OPTION	
END FEED	1.1"
BOTTOM FEED	0.20"
SIDE FEED	0.20"

CUTTING LENGTH INCREMENT TABLE

CODE	LENGTH (CM)	LENGTH (IN)
1	5.6	2.19
2	11.2	4.38
3	16.8	6.57
4	22.4	8.76
5	28	10.95
6	33.6	13.14
7	39.2	15.33
8	44.8	17.52
9	50.4	19.71
10	56	21.9
11	61.6	24.09
12	67.2	26.28
13	72.8	28.47
14	78.4	30.66
15	84	32.85
16	89.6	35.04
17	95.2	37.23
18	100.8	39.42
19	106.4	41.61
20	112	43.8
21	117.6	45.99
22	123.2	48.18
23	128.8	50.37
24	134.4	52.56
25	140	54.75
26	145.6	56.94
27	151.2	59.13
28	156.8	61.32
29	162.4	63.51
30	168	65.7
31	173.6	67.89
32	179.2	70.08
33	184.8	72.27
34	190.4	74.46
35	196	76.65
36	201.6	78.84
37	207.2	81.03
38	212.8	83.22
39	218.4	85.41
40	224	87.6

CODE	LENGTH (CM)	LENGTH (IN)
41	229.6	89.79
42	235.2	91.98
43	240.8	94.17
44	246.4	96.36
45	252	98.55
46	257.6	100.74
47	263.2	102.93
48	268.8	105.12
49	274.4	107.31
50	280	109.5
51	285.6	111.69
52	291.2	113.88
53	296.8	116.07
54	302.4	118.26
55	308	120.45
56	313.6	122.64
57	319.2	124.83
58	324.8	127.02
59	330.4	129.21
60	336	131.4
61	341.6	133.59
62	347.2	135.78
63	352.8	137.97
64	358.4	140.16
65	364	142.35
66	369.6	144.54
67	375.2	146.73
68	380.8	148.92
69	386.4	151.11
70	392	153.3
71	397.6	155.49
72	403.2	157.68
73	408.8	159.87
74	414.4	162.06
75	420	164.25
76	425.6	166.44
77	431.2	168.63
78	436.8	170.82
79	442.4	173.01
80	448	175.2

CODE	LENGTH (CM)	LENGTH (IN)
81	453.6	177.39
82	459.2	179.58
83	464.8	181.77
84	470.4	183.96
85	476	186.15
86	481.6	188.34
87	487.2	190.53
88	492.8	192.72
89	498.4	194.91
90	504	197.1
91	509.6	199.29
92	515.2	201.48
93	520.8	203.67
94	526.4	205.86
95	532	208.05
96	537.6	210.24
97	543.2	212.43
98	548.8	214.62
99	554.4	216.81
100	560	219
101	565.6	221.19
102	571.2	223.38
103	576.8	225.57
104	582.4	227.76
105	588	229.95
106	593.6	232.14
107	599.2	234.33
108	604.8	236.52
109	610.4	238.71
110	616	240.9
111	621.6	243.09
112	627.2	245.28
113	632.8	247.47
114	638.4	249.66
115	644	251.85
116	649.6	254.04
117	655.2	256.23
118	660.8	258.42
119	666.4	260.61
120	672	262.8

LNT-45 BLACK

3.7W IP67/68 FLEXIBLE LED NEON SERIES

CUTTING LENGTH CODES

LNT-45 Black is cuttable every 2.19" (5.6CM). Please refer to the chart below to determine actual lengths once LED is cut versus actual lengths required or specified.

Total Length Calculation = Order Code Length + End Feed option Length

Example: 33.95" Total Length = Order Code 15 (32.85") + (1.1") End Feed

POWER FEED OPTION	
END FEED	1.1"
BOTTOM FEED	0.20"
SIDE FEED	0.20"

CUTTING LENGTH INCREMENT TABLE

CODE	LENGTH (CM)	LENGTH (IN)
121	677.6	264.99
122	683.2	267.18
123	688.8	269.37
124	694.4	271.56
125	700	273.75
126	705.6	275.94
127	711.2	278.13
128	716.8	280.32
129	722.4	282.51
130	728	284.7
131	733.6	286.89
132	739.2	289.08
133	744.8	291.27
134	750.4	293.46
135	756	295.65
136	761.6	297.84
137	767.2	300.03
138	772.8	302.22
139	778.4	304.41
140	784	306.6
141	789.6	308.79
142	795.2	310.98
143	800.8	313.17
144	806.4	315.36
145	812	317.55
146	817.6	319.74
147	823.2	321.93
148	828.8	324.12
149	834.4	326.31
150	840	328.5
151	845.6	330.69
152	851.2	332.88
153	856.8	335.07
154	862.4	337.26
155	868	339.45
156	873.6	341.64
157	879.2	343.83
158	884.8	346.02
159	890.4	348.21
160	896	350.4

CODE	LENGTH (CM)	LENGTH (IN)
161	901.6	352.59
162	907.2	354.78
163	912.8	356.97
164	918.4	359.16
165	924	361.35
166	929.6	363.54
167	935.2	365.73
168	940.8	367.92
169	946.4	370.11
170	952	372.3
171	957.6	374.49
172	963.2	376.68
173	968.8	378.87
174	974.4	381.06
175	980	383.25

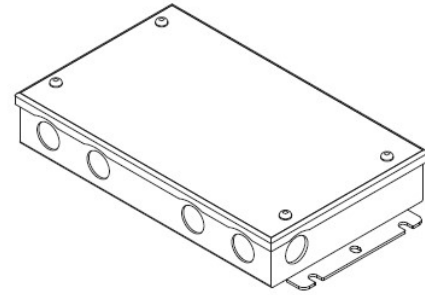
LNT-45 BLACK

3.7W IP67/68 FLEXIBLE LED NEON SERIES

COMPATIBLE TRANSFORMERS

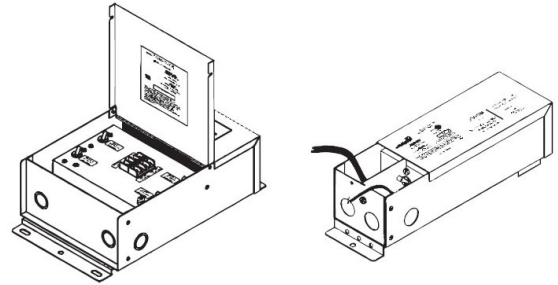
PSDL SERIES TRIAC DIMMABLE

PSDL-30W-24V	CLASS 2	6.5" X 3.63" X 1.03"
PSDL-60W-24V	CLASS 2	7.4" X 3.63" X 1.03"
PSDL-96W-24V	CLASS 2	8.67" X 3.67" X 1.62"
PSDL-150W-24V		8.67" X 3.67" X 1.62"
PSDL-192W-24V	CLASS 2	10.25" X 4.06" X 1.82"
PSDL-200W-24V		10.25" X 4.06" X 1.82"
PSDL-288W-24V	CLASS 2	10.25" X 4.06" X 1.82"
PSDL-300W-24V		10.25" X 4.06" X 1.82"



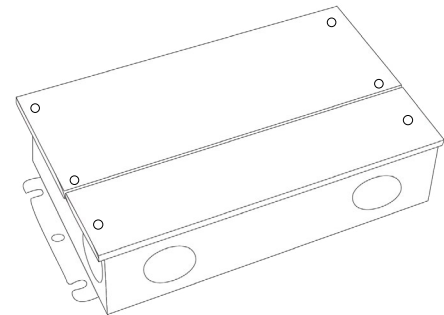
PSDH SERIES HIGH PERFORMANCE MAGNETIC LOW VOLTAGE (MLV)

PSDH-48W-24V	CLASS 2	11.25" X 3.37" X 3.25"
PSDH-96W-24V	CLASS 2	11.25" X 3.37" X 3.25"
PSDH-288W-24V	CLASS 2	14.25" X 8.43" X 4.43"



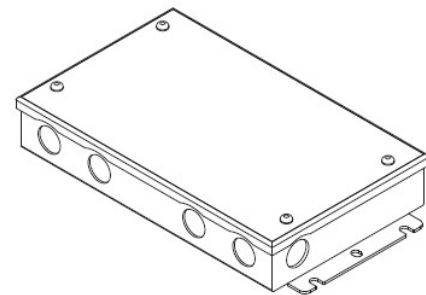
PSRX SERIES 4-IN-1 DIMMING DRIVER

PSRX-30W-24V	CLASS 2	6.5" X 3.72" X 1.57"
PSRX-60W-24V	CLASS 2	7.4" X 3.72" X 1.57"
PSRX-96W-24V	CLASS 2	8.66" X 3.72" X 1.57"
PSRX-150W-24V		10.24" X 4.13" X 1.77"
PSRX-192W-24V	CLASS 2	11" X 4" X 1.82"
PSRX-200W-24V		10.24" X 4.13" X 1.77"
PSRX-288W-24V	CLASS 2	11.85" X 4.25" X 1.82"
PSRX-300W-24V		10.94" X 4.33" X 1.77"



PSVT SERIES 0-10V DIMMING DRIVER

PSVT-60W-24V	CLASS 2	7.4" X 3.72" X 1.57"
PSVT-96W-24V	CLASS 2	8.66" X 3.72" X 1.57"
PSVT-200W-24V		10.24" X 4.13" X 1.77"
PSVT-288W-24V	CLASS 2	11.85" X 4.25" X 1.81"
PSVT-300W-24V		10.94" X 4.33" X 1.77"



LNT-45 BLACK

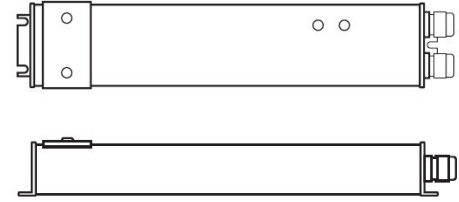
3.7W IP67/68 FLEXIBLE LED NEON SERIES

COMPATIBLE TRANSFORMERS

PSDE SERIES

0-10V DIMMING W/ JUNCTION BOX

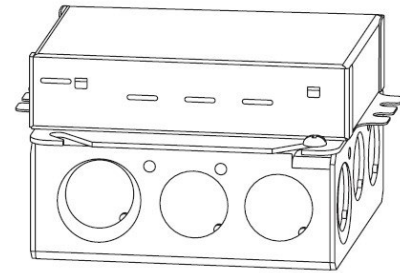
PSDE-60W-24V-010-JB	CLASS 2	12.1" X 2.36" X 1.4"
PSDE-96W-24-010-JB	CLASS 2	12.1" X 2.36" X 1.4"



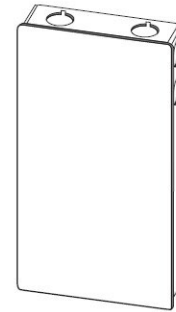
LUTRON 1%

3-WIRE DIMMING

L3DA4U1UJKL-CV240	CLASS 2	4.89" X 4" X 2.62"
-------------------	---------	--------------------



PSDE-96W-24V-ECO	CLASS 2	10.5" X 3.0" X 2.0"
------------------	---------	---------------------



COMPATIBLE NON-DIMMING DRIVERS

PSHK SERIES

NON-DIMMING CONSTANT VOLTAGE WITH JUNCTION BOX

PSHK-30W-24V	CLASS 2	6.5" X 3.6" X 1.02"
PSHK-60W-24V	CLASS 2	7.4" X 3.62" X 1.02"
PSHK-96W-24V	CLASS 2	8.66" X 3.66" X 1.61"
PSHK-150W-24V		10.24" X 4.06" X 1.81"
PSHK-200W-24V		10.24" X 4.06" X 1.81"
PSHK-288W-24V	CLASS 2	11.85" X 4.25" X 1.82"
PSHK-300W-24V		10.24" X 4.25" X 1.81"

