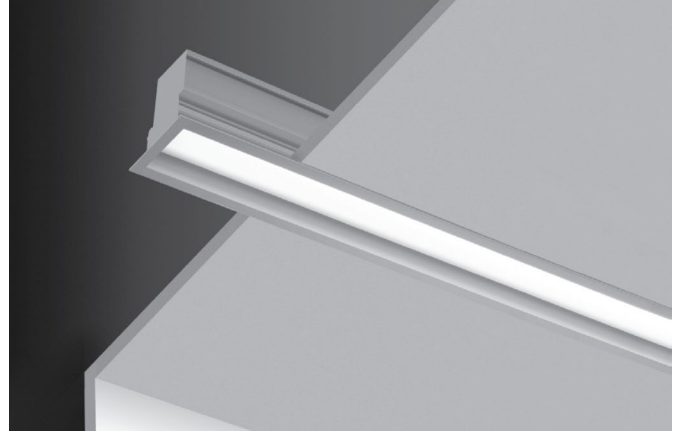


# ALP-155R

## RECESSED MOUNT LED PROFILE

Project \_\_\_\_\_  
Location \_\_\_\_\_  
Quote/ Ref # \_\_\_\_\_

**ALP-155R** is a compact recessed slot profile designed for linear LED strips up to 10mm (0.39 in) wide. Engineered for versatility, it can be installed horizontally or vertically to create continuous runs or stand-alone segments. ALP-155R adapts easily to a wide range of commercial and public environments.



### SPECIFICATIONS

TYPE	Recessed Mount
AVAILABLE LENGTHS	48 in.   72 in.   96 in.
FINISH	White, Black, Silver
LENS OPTION	Frosted
CHANNEL	ALP155R
LENS	ALP155R-LN (Included)
END CAP	ALP155R-EC (Included)
WARRANTY	5 Years

### FEATURES

- Compatible with 10mm (0.39") wide LED strips
- Customizable
- Durable, anodized aluminum
- Frosted lens diffuser included
- Protects LED systems from dust and other elements
- Dissipates heat from LED, prolonging its lifetime
- Suitable for recessed installations and applications



MODEL	LENGTH	LENS	FINISH
ALP155R	<b>48</b> 48 in.	<b>FR</b> Frosted	<b>WH*</b> White
	<b>72*</b> 72 in.		<b>BK*</b> Black
	<b>96*</b> 96 in.		<b>SI</b> Silver
	<b>XX*</b> Custom		
*Made to order. Allow 5-6 weeks lead time.		*Allow 4 weeks lead time.	

# ALP-155R

## RECESSED MOUNT LED PROFILE

### DIMENSIONS

