

INSTALLATION GUIDE

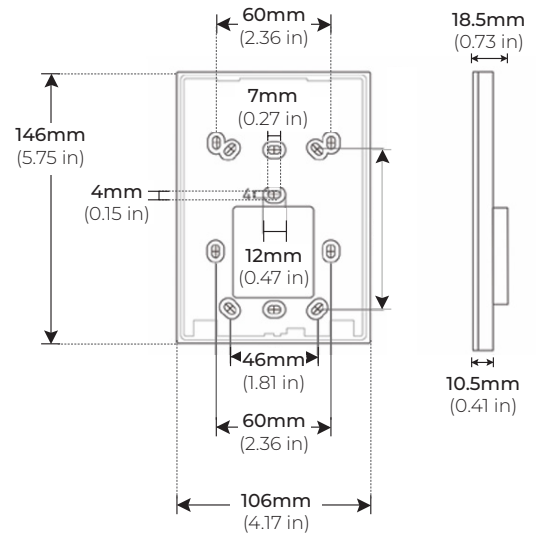


PRE-INSTALLATION

Surface Mount

Disconnect power source prior to installation.

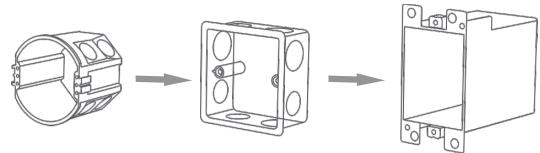
DIMENSIONS



INSTALLATION

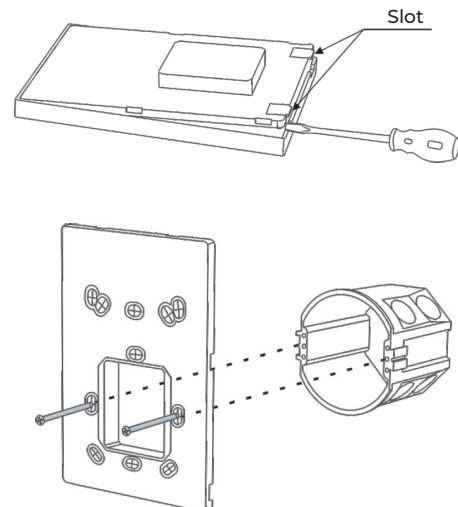
STEP 1 Install the back box into the wall. (Figure 1)

Figure 1



STEP 2 Use a screwdriver to pry the touch panel off the baseplate, and screw the baseplate into the back box. (Figure 2)

Figure 2



INSTALLATION

STEP 3

Connect the DMX signal output and power input to the power adapter, and put the power adapter into the back box. (Figure 3)

STEP 4

Embed the upper touch panel into the baseplate and tap the bottom to press into the slots. (Figure 4)

Figure 3

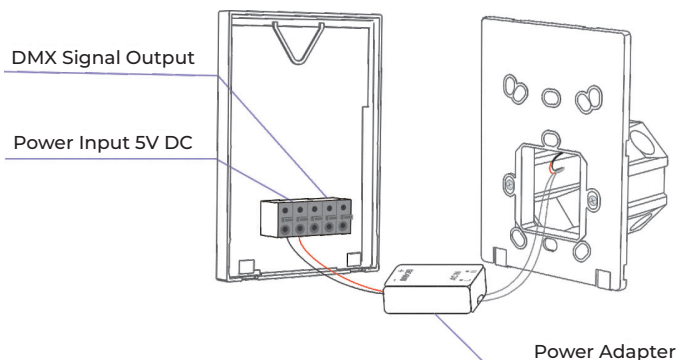


Figure 4

