

ALP-23

IN-GROUND (RECESSED) LED PROFILE

Project

Location

Quote/ Ref #

ALP-23 is an architectural-grade LED profile designed for recessed in-ground applications. It features a polycarbonate frosted diffuser that provides uniform light distribution while maintaining durability and resistance to wear. Engineered for sleek, seamless integration, the ALP-23 delivers a clean, modern lighting solution for high-traffic indoor spaces.



SPECIFICATIONS

TYPE	In-Ground (Recessed) Mount
AVAILABLE LENGTHS	48" / 98"
FINISH OPTIONS	Silver
LENS OPTIONS	Frosted
MAX LOAD	5,000 lbs.
CHANNEL	ALP23
LENS	ALP23-LN (included)
END CAP	ALP23-EC (included)

FEATURES

- Customizable
- Compatible with LED strips up to 14mm (0.55 in) wide
- Suitable for in-ground applications
- Durable, anodized aluminum
- Protects LED systems from dust and other elements
- Dissipates heat from LED, prolonging its lifetime

*LED strips sold separately

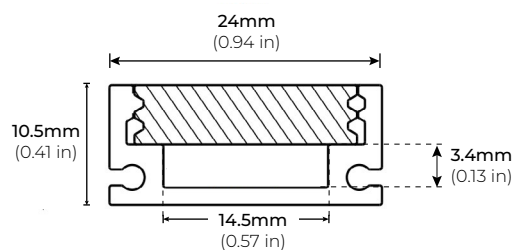


MODEL	LENGTH	LENS	FINISH
ALP23	48 48 In.	FR Frosted	SI Silver
	98 98 In.		

ALP-23

IN-GROUND (RECESSED) LED PROFILE

DIMENSIONS



ACCESSORIES

ALP23-EC END CAP

*Two end caps included with every channel

