

## INSTALLATION GUIDE

UPDATED: 04.09.25

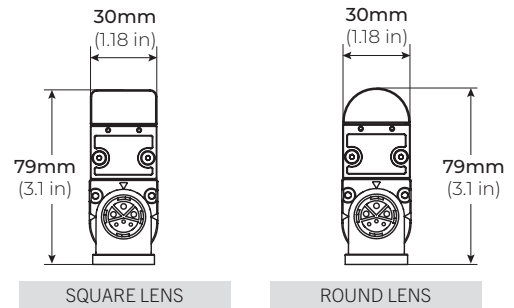


### PRE-INSTALLATION

#### Surface Mount

Disconnect power source prior to installation.

### DIMENSIONS



### SAFETY

**Read all instructions before installation.**

These products may present a possible shock, serious injury, or death if improperly installed.

**Do not** install within 10 ft or less from the nearest edge of a pool, spa, fountain, or similar location

**Do not** cut, connect or join wires while this product is connected to a live power source.



Product should be installed by a qualified electrician.



Product should be installed in accordance with these instructions and current electrical codes.

### ADJUSTABLE MOUNTING INSTALLATION

LPX80-FMB

#### STEP 1

Position fixture and mark the screw hole locations. Pre-drill as needed.

#### STEP 2

Locate the marked or pre-drilled holes and reposition fixture. Secure fixture in place with screws in the designated screw holes, located on the side flanges. (Figure 1)

#### STEP 3

Connect each desired fixture using the provided connectors and cables.

#### STEP 4

Connect the input cable to the AC Main. Daisy-chain the connector on the opposite end to the next fixture if desired. (Figure 2)

Figure 1

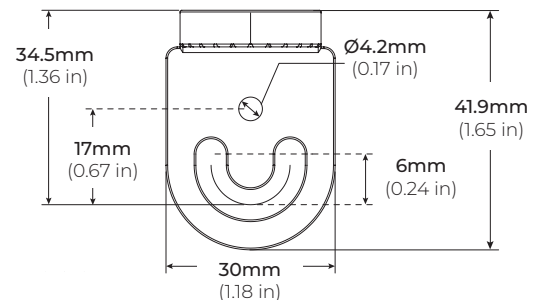
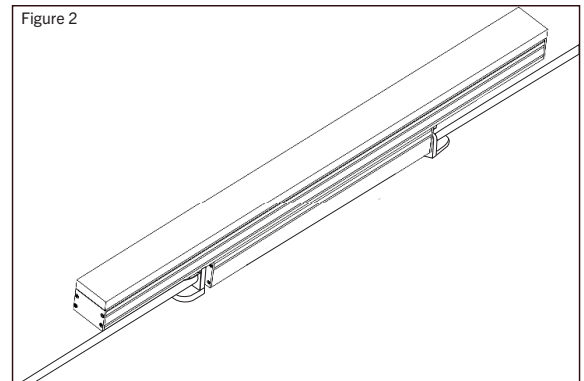


Figure 2



## WIRING GUIDE

