

# LSA-TB SERIES

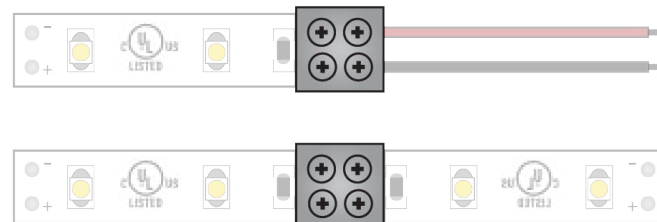
## SOLDERLESS LED STRIP/ WIRE CONNECTORS

Project \_\_\_\_\_

Location \_\_\_\_\_

Quote/ Ref # \_\_\_\_\_

**LSA-TB** series connectors are designed for safety, versatility, and ease of use while ensuring a secure connection between tape light sections and lead wires. Able to fit inside aluminum channels with an inside width up to 0.55 inches (14mm) wide, these LED tape connectors provide the option of a solderless connection for quicker installation.



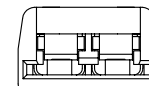
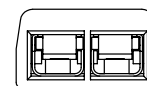
### FEATURES

- Easy installation
- Durable
- Creates a secure connection without the need for soldering
- Fits inside most LED extrusions/ profiles
- Suitable for tape light to tape light connections
- Suitable for tape light to lead wire connections



#### LSA-TB-HWC-2A HARDWIRE CONNECTOR

- Provide solderless connection from LED strip to lead wire
- Compatible with 12V and 24V systems
- 2 Amps Maximum
- 13.4mm x 11.4mm x 6.7mm (0.53" x 0.45" x 0.26")



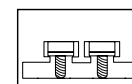
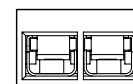
#### LSA-TB-MC-L90-2A CORNER JOINTER CONNECTOR

- Provide solderless connection between two LED strips
- Compatible with 12V and 24V systems
- 2 Amps Maximum
- 15.4mm x 15.4mm x 6.6mm (0.61" x 0.61" x 0.26")



#### LSA-TB-HWC-4A HARDWIRE CONNECTOR

- Provide solderless connection from LED strip to lead wire
- Compatible with 12V and 24V systems
- 4 Amps Maximum
- 11.4mm x 12.3mm x 8mm (0.45" x 0.48" x 0.31")



#### LSA-TB-MC-4A JOINTER CONNECTOR

- Provide solderless connection between two LED strips
- Compatible with 12V and 24V systems
- 4 Amps Maximum
- 11.4mm x 12.2mm x 8mm (0.45" x 0.48" x 0.31")

