

LINEAR-PIXEL BAR

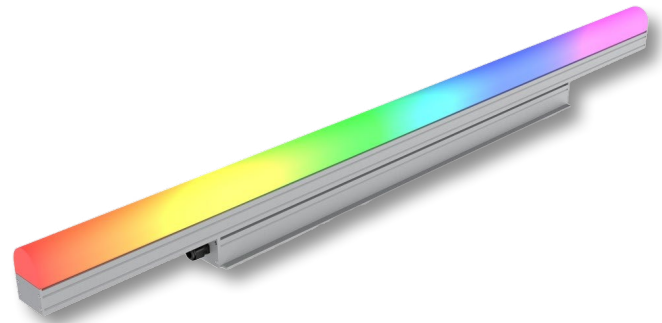
120V-277V INDOOR/ OUTDOOR ACCENT LIGHT

Project _____

Location _____

Quote/ Ref # _____

The **Linear Pixel Bar** is a powerful 120V LED linear luminaire ideal for media facades and delineation of largescale structures such as bridges and towers. IP66-rated for outdoor applications, the Linear Pixel Bar's acrylic square or rounded diffuser lenses produce perfectly uniform and saturated light that can be controlled with up to 12 in resolution for dynamic shows and monochrome video effects.



SPECIFICATIONS

INPUT VOLTAGE	120V-277V
POWER CONSUMPTION	8W per Ft.
LEDS PER FIXTURE	12 LEDs (24") 18 LEDs (36") 24 LEDs (48")
PIXELS	Addressable Every 2 in.
LUMEN OUTPUT	Up to 265 Lm/ Ft. (Square Lens) Up to 260 Lm/ Ft. (Round Lens)
BEAM ANGLE	140° x 110° (Square Lens) 180° x 110° (Round Lens)
COLOR TEMPERATURE	RGBW+30K
DIMMING/ CONTROL	DMX
MAXIMUM RUN LENGTH	20 Ft.
IP RATING	IP66 Wet Location Rated
AMBIENT TEMPERATURE	-4°F (-20°C) to +122°F (+50°C)
LUMEN MAINTENANCE	50,000 Hrs.
CERTIFICATIONS	UL Listed
WARRANTY	5 years

FEATURES

- 120V-277V
- 8W per Ft.
- 265 Lumens per Ft.
- DMX Control
- IP66 Wet Location
- UL Listed

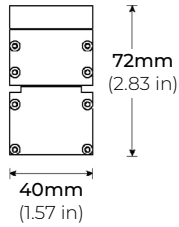


MODEL	LENGTH	COLOR TEMP	MOUNTING	LENS	FINISH
LPX120	24 23.62 in.	RGBW30K RGB + 3000K	FMB Fixed Mounting	SQ Square	WH White
	36 35.43 in.		AM Adjustable Mounting	RN Round	BK Black
	48 47.24 in.				GR Grey

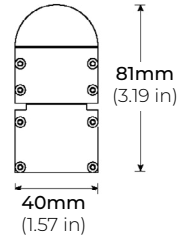
LINEAR-PIXEL BAR

120V-277V INDOOR/ OUTDOOR ACCENT LIGHT

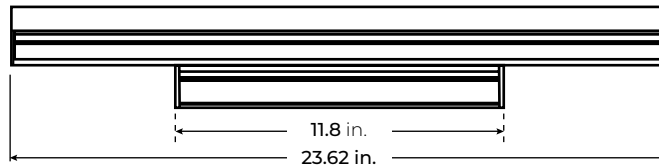
DIMENSIONS



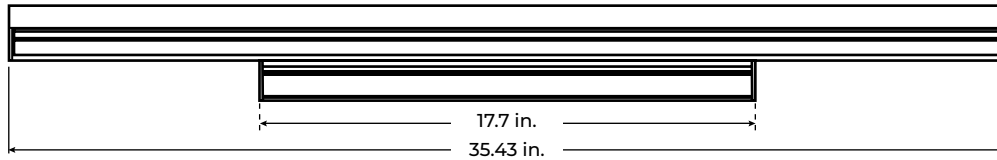
SQUARE LENS



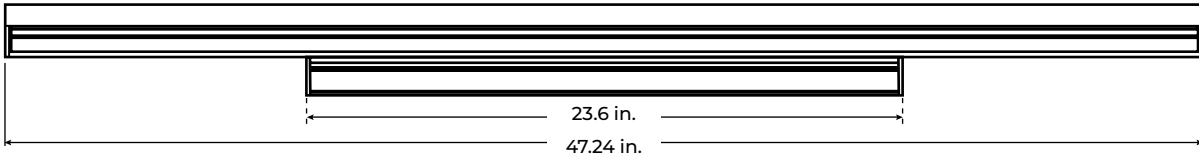
ROUND LENS



LPX120-24

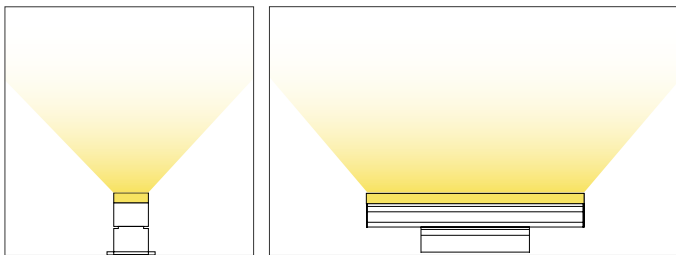


LPX120-36



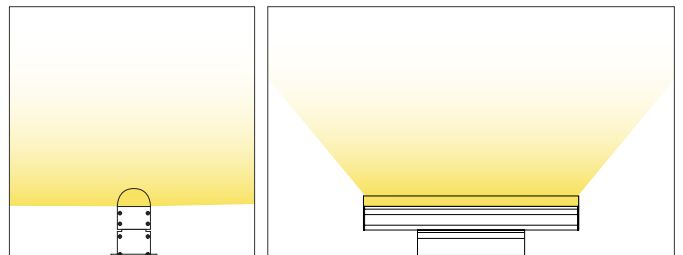
LPX120-48

OPTICS



SQUARE LENS

140° x 110°



ROUND LENS

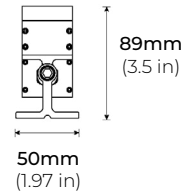
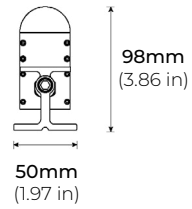
180° x 110°

LINEAR-PIXEL BAR

120V-277V INDOOR/ OUTDOOR ACCENT LIGHT

MOUNTING OPTIONS

LPX120-AM
ADJUSTABLE MOUNTING



COMPATIBLE ACCESSORIES

LPX120-LNK-10
LPX120-LNK-36
LPX120-LNK-72
10", 36", 72" LINK EXTENSION CABLE
*Sold Separately



LPX120-HWC-72
LPX120-HWC-120
72" AND 120" HARDWIRE CABLE
*Sold Separately

