

# LWW-WMA

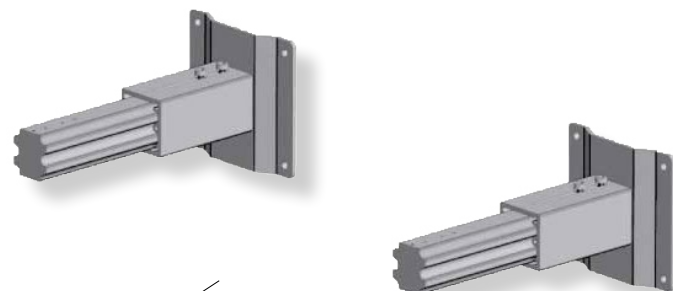
## MOUNTING ARMS FOR LWW SERIES WALL WASHERS

Project \_\_\_\_\_

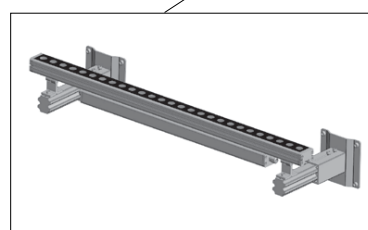
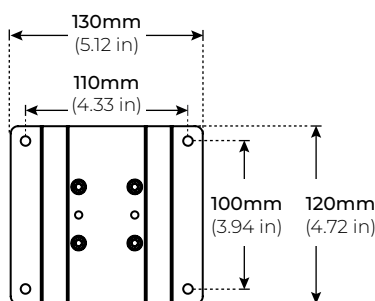
Location \_\_\_\_\_

Quote/ Ref # \_\_\_\_\_

Heavy-duty aluminum mounting arms that are designed to hold the LWW linear fixtures firmly in place. Easily make changes with the adjustable length. Available in two adjustable sizes, these sturdy mounting arms can hold your fixtures from 6" to 22" away from the lighting surface. Level up your lighting and stabilize your wall washers and grazers with the new LWW series mounting arm.

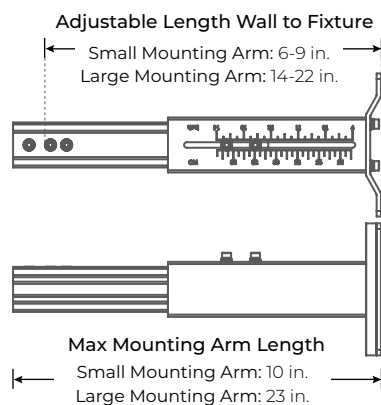


### DIMENSIONS



### FEATURES

- Powder coated heavy duty aluminum
- 2 Adjustable sizes for indoor/ outdoor use
- Supports linear wall washers and grazers



MODEL	LENGTH	
LWW-WMA	<b>SM</b> Small (6" - 9")  <b>LG</b> Large (14" - 22")  <b>*CU</b> Custom	
	* Please contact factory	