

LNT65-RGBW

4.5W IP67/IP68 Color-Changing+White Neon Series



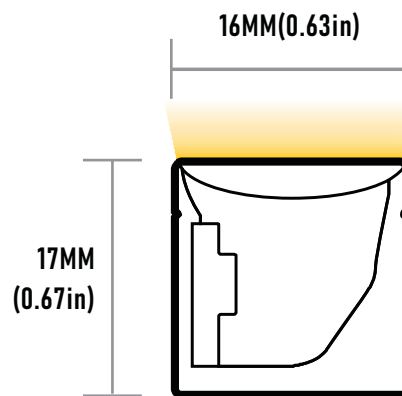
LNT65-RGBW is a high performance flexible LED fixture designed as a neon replacement. Suitable for indoor and outdoor applications, the LNT65-RGBW can bend around contours or tight radiuses without being damaged. It allows for easy installation with its factory sealed terminators and self-locking male and female barrel connectors.

FEATURES

- High color consistency and smooth illumination
- Multiple CCT options available
- Available in IP67 & IP68
- UL-676 Pool Submersible (IP68 model)
- Waterproof/underwater submersible
- Bottom, Side and End Feed options

SPECIFICATIONS

INPUT VOLTAGE	24V DC Constant Voltage
POWER CONSUMPTION	4.5W per Ft.
LUMEN OUTPUT	190 Lumens per Ft.
BEAM ANGLE	160°
CRI	88+
DIMMING	Thru RGB controller
MAXIMUM RUN LENGTH	32 Ft.
IP RATING	IP67 / IP68
LUMEN MAINTENANCE	50,000 Hours
LED CHIP	NICHIA
OPERATING TEMPERATURE	-4°F ~113°F (-20°C ~ 45°C)
STORAGE TEMPERATURE	-40°F ~176°F (-40°C ~ 80°C)
HUMIDITY	0-95% Non Condensing
CERTIFICATIONS	UL Listed / UL-676 (IP68)
DIMENSIONS	Width x Depth: 0.63" x 0.67"



LNT-65-RGBW

4.5W IP67/IP68 Color-Changing+White Neon Series



STANDARD ORDERING GUIDE

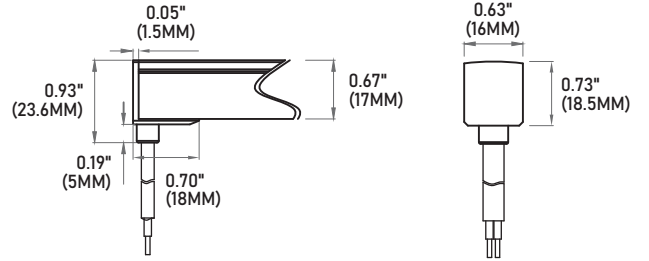
Model	Lens	Light Surface	Color Temp	Voltage	Length (CODE)	Power Feed	Power Feed Length
LNT-65R6BW	F Flat	HB Horizontal Bend	RGBW-27K RGB+2700K	24V 24V DC	Please refer to pages 6-7 for exact lengths with corresponding ordering codes.	IP67BF Bottom Feed	HW3 3 Ft. Power Feed
		VB Vertical Bend	RGBW-40K RGB+4000K			IP67SFL Side Feed Left	HW10 10 Ft. Power Feed
						IP67SFR Side Feed Right	HW15 15 Ft. Power Feed
						IP67EF End Feed	HW30 30 Ft. Power Feed
							HW50 50 Ft. Power Feed
						IP68BF Bottom Feed	
						IP68SFL Side Feed Left	
						IP68SFR Side Feed Right	
						IP68EF End Feed	

LNT-65-RGBW

4.5W IP67/IP68 Color-Changing+White Neon Series

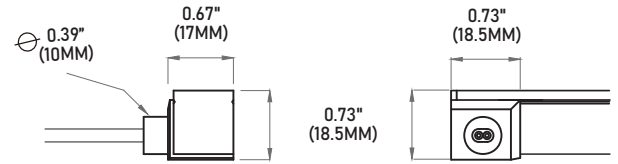
IP67 POWER FEED

BF
Bottom Feed



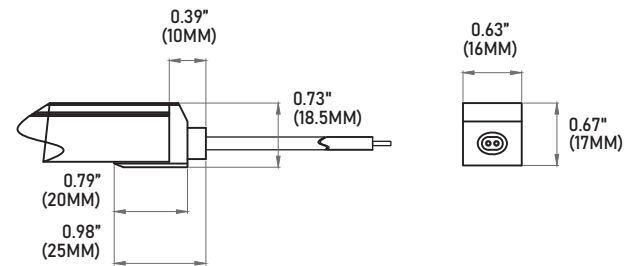
SFL
Side Feed Left

LEFT

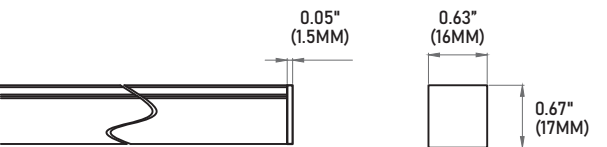


SFR
Side Feed Right

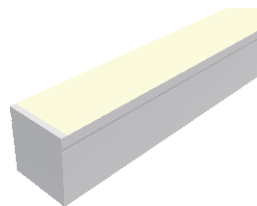
RIGHT



EF
End Feed



EC
End Cap



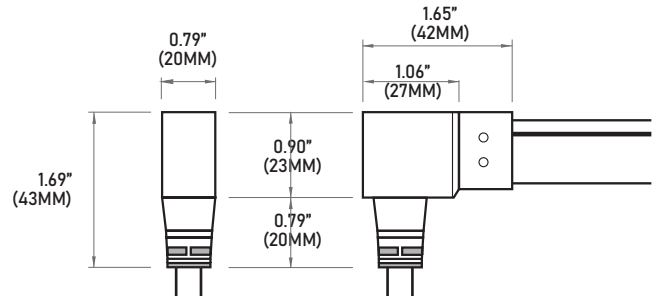
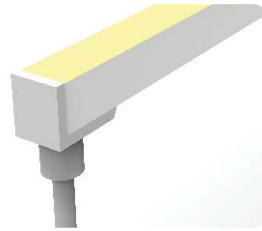
LNT-65-RGBW

4.5W IP67/IP68 Color-Changing+White Neon Series

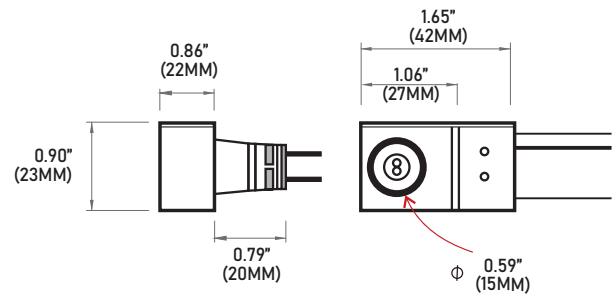
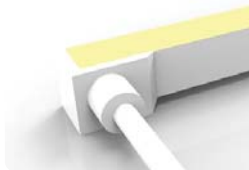


IP68 POWER FEED

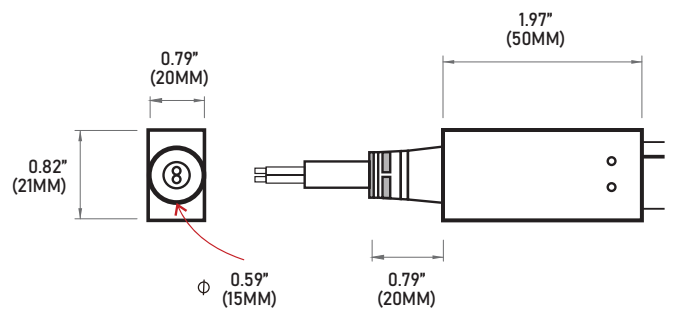
BF
Bottom Feed



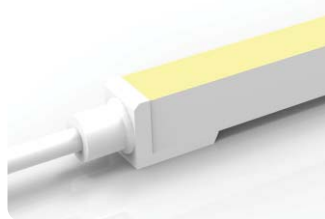
SFL
Side Feed Left



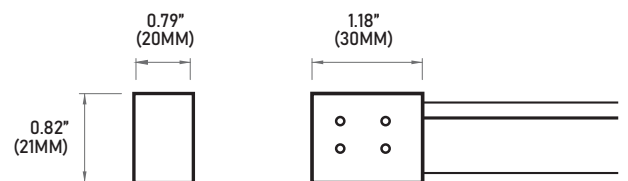
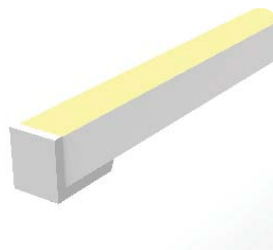
SFR
Side Feed Right



EF
End Feed



EC
End Cap



LNT-65-RGBW

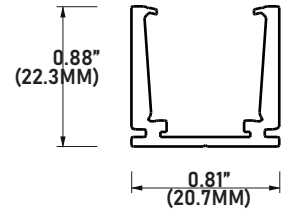
4.5W IP67/IP68 Color-Changing+White Neon Series

ACCESSORIES

SELF LOCKING ALUMINUM PROFILE

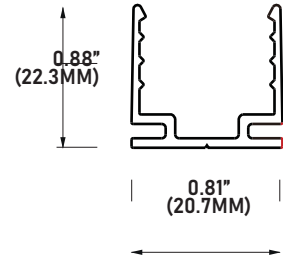
LNT65-AC2
2" Profile

LNT65-AC39
39" Profile



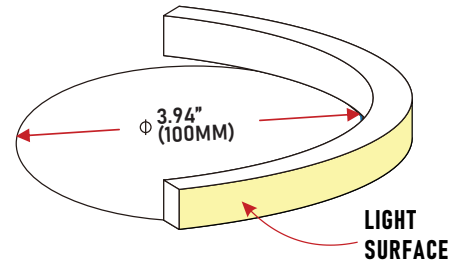
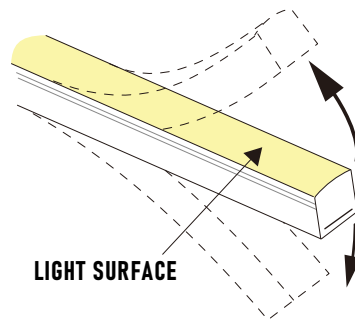
PLASTIC PROFILE

LNT65-PC39
39" Profile

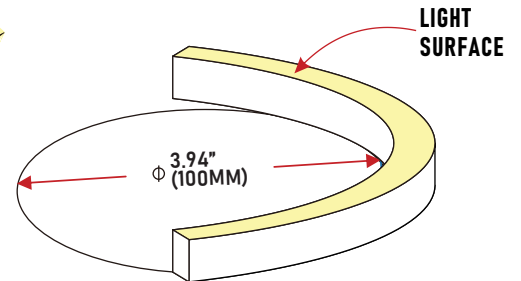
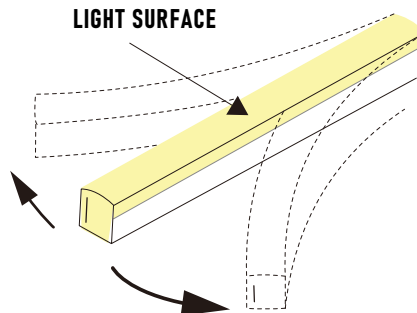


BEND RADIUS

(VERTICAL BEND)



(HORIZONTAL BEND)



LNT-65-RGBW

4.5W IP67/IP68 Color-Changing+White Neon Series



LNT65-RGBW Series is cuttable **every 2.19" (5.56 CM)**. Please refer to chart below to determine actual lengths once LED is cut versus actual lengths required or specified.

Total Length Calculation = order code length + end feed option length
 example: 66.92" total length = code 30 + IP67 side feed (65.67" + 1.25")

Optional lead wire lengths available: **3Ft., 10Ft., 16Ft., 32Ft., 50Ft.**

POWER FEED OPTION	IP67	IP68
END FEED	1.25"	2.76"
BOTTOM FEED	1.25"	2.76"
SIDE FEED	1.25"	2.76"

CUTTING LENGTH INCREMENT TABLE

CODE	LENGTH IN CM	LENGTH IN INCHES	CODE	LENGTH IN CM	LENGTH IN INCHES
3	16.68	6.57	34	189.04	74.43
4	22.24	8.76	35	194.6	76.61
5	27.8	10.94	36	200.16	78.80
6	33.36	13.13	37	205.72	81.00
7	38.92	15.32	38	211.28	83.18
8	44.48	17.51	39	216.84	85.37
9	50.04	19.70	40	222.4	87.56
10	55.6	21.89	41	227.96	89.75
11	61.16	24.08	42	233.52	91.94
12	66.72	26.27	43	239.08	94.13
13	72.28	28.46	44	244.64	96.31
14	77.84	30.65	45	250.2	98.50
15	83.4	32.83	46	255.76	100.70
16	88.96	35.02	47	261.32	102.89
17	94.52	37.21	48	266.88	105.07
18	100.08	39.40	49	272.44	107.26
19	105.64	41.59	50	278	109.45
20	111.2	43.78	51	283.56	111.64
21	116.76	45.97	52	289.12	113.83
22	122.32	48.16	53	294.68	116.02
23	127.88	50.35	54	300.24	118.21
24	133.44	52.54	55	305.8	120.40
25	139	54.72	56	311.36	122.59
26	144.56	56.91	57	316.92	124.78
27	150.12	59.10	58	322.48	126.96
28	155.68	61.29	59	328.04	129.15
29	161.24	63.48	60	333.6	131.34
30	166.8	65.67	61	339.16	133.53
31	172.36	67.86	62	344.72	135.72
32	177.92	70.05	63	350.28	137.91
33	183.48	72.24	64	355.84	140.09
			65	361.4	142.28
			66	366.96	144.47

LNT-65-RGBW

4.5W IP67/IP68 Color-Changing+White Neon Series



CUTTING LENGTH INCREMENT TABLE

CODE	LENGTH IN CM	LENGTH IN INCHES	CODE	LENGTH IN CM	LENGTH IN INCHES
67	372.52	146.66	107	594.92	234.22
68	378.08	148.85	108	600.48	236.41
69	383.64	151.04	109	606.04	238.59
70	388.95	153.23	110	611.12	240.78
71	394.76	155.42	111	617.16	242.98
72	400.32	157.61	112	622.72	245.17
73	405.88	159.80	113	628.28	247.35
74	411.44	161.98	114	633.84	249.54
75	416.68	164.17	115	638.91	251.73
76	422.56	166.36	116	644.96	253.92
77	428.12	168.55	117	650.52	256.12
78	433.68	170.74	118	656.08	258.31
79	439.24	172.93	119	661.64	260.50
80	444.47	175.13	120	666.72	262.68
81	450.36	177.31	121	672.76	264.88
82	455.92	179.49	122	678.32	267.07
83	461.48	181.69	123	683.88	269.25
84	467.04	183.87	124	689.44	271.44
85	472.60	186.06	125	694.51	273.63
86	478.16	188.25	126	700.56	275.82
87	483.72	190.44	127	706.12	278.01
88	489.28	192.63	128	711.68	280.20
89	494.84	194.82	129	717.24	282.39
90	500.40	197.02	130	722.24	284.58
91	505.96	199.20	131	728.36	286.76
92	511.52	201.39	132	733.92	288.96
93	517.08	203.58	133	739.48	291.15
94	522.64	205.77	134	745.04	293.33
95	528.2	207.96	135	750.03	295.52
96	533.76	210.14	136	756.16	297.70
97	539.32	212.34	137	761.72	299.90
98	544.88	214.53	138	767.28	302.09
99	550.44	216.72	139	772.84	304.28
100	556	218.91	140	777.84	306.47
101	561.56	221.10	141	783.96	308.66
102	567.12	223.28	142	789.52	310.85
103	572.68	225.47	143	795.08	313.04
104	578.24	227.66	144	800.64	315.23
105	583.8	229.85	145	806.20	317.41
106	589.36	232.04	146	811.76	319.60

LNT-65-RGBW

4.5W IP67/IP68 Color-Changing+White Neon Series



CUTTING LENGTH INCREMENT TABLE

CODE	LENGTH IN CM	LENGTH IN INCHES
147	817.32	321.78
148	822.88	323.97
149	828.44	326.17
150	833.34	328.35
151	839.56	330.54
152	845.12	332.72
153	850.68	334.91
154	856.24	337.10
155	861.16	339.30
156	867.36	341.49
157	872.92	343.67
158	878.48	345.87
159	884.04	348.06
160	888.94	350.25
161	895.16	352.44
162	900.72	354.63
163	906.28	356.82
164	911.84	359.01
165	916.68	361.20
166	922.96	363.37
167	928.52	365.57
168	934.08	367.75
169	939.64	369.94
170	945.20	372.13
171	950.76	374.32
172	956.32	376.50
173	961.88	378.69
174	967.44	380.88
175	972.28	383.09
176	978.56	385.28
177	984.12	387.45
178	989.68	389.64
179	995.24	391.83
180	1000.8	394.02

LNT-65-RGBW

4.5W IP67/IP68 Color-Changing+White Neon Series



COMPATIBLE WALL CONTROLLERS

RGB CT600

MULTI-FUNCTION RGBW WALL CONTROLLER

INPUT VOLTAGE

5V DC, 1A

OUTPUT SIGNAL

RF 2.4GHz + DMX512

CONTROL

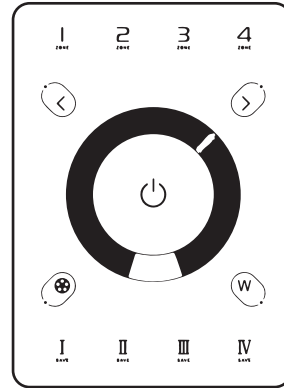
4 ZONES

WORKING TEMP

-20°C ~ 40°C

DIMENSIONS

LxWxH (5.19"x 7.08"x 1.38")



RGB-SDE3

MULTI-FUNCTION RGBW WALL CONTROLLER

INPUT POWER

6V DC 0.6A

OUTPUT SIGNAL

DMX512 (x2)

PROGRAMMABILITY

PC, MAC,
Tablet, Smartphone

AVAILABLE COLORS

Black / White

CONNECTIONS

USB, Ethernet, RS232,
Clock, 8dry contact ports,
5V output relay

MEMORY

microSD card

WORKING TEMP

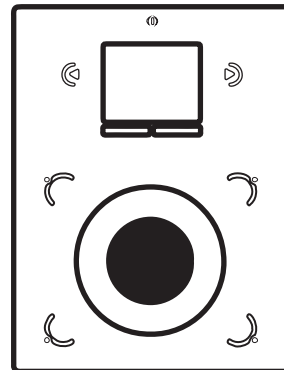
-10°C ~ 45°C

WEIGHT (gross)

247g

DIMENSIONS

LxWxH (5.75"x 4.17"x 0.43")



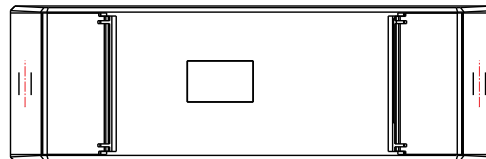
LNT-65-RGBW

4.5W IP67/IP68 Color-Changing+White Neon Series

COMPATIBLE DMX RECEIVERS

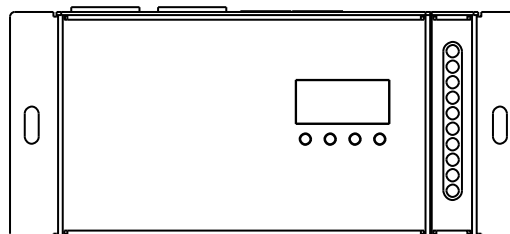
RGB-DMX-4C-RJ45 4-CHANNEL DMX DECODER

INPUT	12V - 24V DC
OUTPUT CURRENT	8A X 4CH
OUTPUT POWER	240W(12V), 720W (24V)
OUTPUT CHANNELS	3 or 4 selectable
DIMENSIONS	LxWxH (7"x 1.77"x 0.75")



RGB-DMX-5C-XLR 5-CHANNEL DMX DECODER

INPUT	12V-24V-36V DC
OUTPUT VOLTAGE	12V-24V DC
OUTPUT CURRENT	8A X 5CH
OUTPUT WATTAGE	5 x (96W ~ 192W)
DIMENSIONS	LxWxH (6.45"x 2.87"x 1.5")



LNT-65-RGBW

4.5W IP67/IP68 Color-Changing+White Neon Series

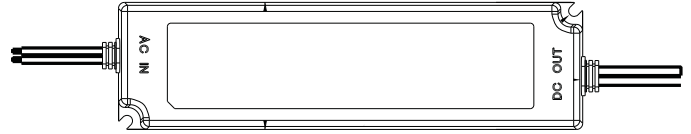


COMPATIBLE NON-DIMMING DRIVERS

PSHW SERIES

NON-DIMMING CONSTANT VOLTAGE

PSHW-10W-24V	CLASS 2	2.55" X 1.37" X .90"
PSHW-20W-24V	CLASS 2	4.64" X 1.38" X 1.2"
PSHW-35W-24V	CLASS 2	5.83" X 1.57" X 1.18"
PSHW-60W-24V	CLASS 2	6.38" X 1.65" X 1.18"
PSHW-100W-24V		7.44" X 2.4" X 1.45"
PSHW-150W-24V		8.75" X 2.68" X 1.53"
PSHW-200W-24V		9.62" X 2.68" X 1.53"
PSHW-300W-24V		9.92" X 3.55" X 1.75"



PSHK SERIES

NON-DIMMING CONSTANT VOLTAGE WITH JUNCTION BOX

PSHK-30W-24V-UNV	CLASS 2	6.5" X 3.6" X 1.02"
PSHK-60W-24V-UNV	CLASS 2	7.4" X 3.62" X 1.02"
PSHK-96W-24V-UNV	CLASS 2	8.66" X 3.66" X 1.61"
PSHK-150W-24V-UNV		10.24" X 4.06" X 1.81"
PSHK-200W-24V-UNV		10.24" X 4.06" X 1.81"
PSHK-300W-24V-UNV		10.94" X 4.25" X 1.81"

