

# LNT-45 BLACK

## 3.7W IP67/68 FLEXIBLE LED NEON SERIES

Project \_\_\_\_\_  
Location \_\_\_\_\_  
Quote/ Ref # \_\_\_\_\_

**LNT-45BK** is a high performance flexible LED fixture designed as a neon replacement. Suitable for indoor and outdoor applications, the LNT-45BK easily bends around contours and tight curves without being damaged. It allows for easy installation with its factory sealed terminators and self-locking male and female barrel connectors.



### SPECIFICATIONS

INPUT VOLTAGE	24V DC Constant Voltage
POWER CONSUMPTION	3.7W per Ft.
LUMEN OUTPUT	21 Lm/ Ft.
CRI	85+
COLOR TEMPERATURE	22K/ 27K/ 30K/ 35K/ 40K/ 50K
DIMMING/ CONTROL	MLV, ELV, 0-10 and TRIAC
MAXIMUM RUN LENGTH	32 Ft.
CUTTABLE	Every 55.6mm (2.19 in)
POWER FACTOR	≤ 1
STORAGE TEMPERATURE	-40°F (-40°C) to 140°F (60°C)
OPERATING TEMPERATURE	-40°F (-40°C) to 131°F (55°C)
BEAM ANGLE	160°
HUMIDITY	0-95% Non Condensing
IP RATING	IP67/ IP68
CERTIFICATIONS	UL Listed
LUMEN MAINTENANCE	50,000 Hrs.

### FEATURES

- High color consistency
- Smooth illumination
- Black Protective Jacket
- Continuous run length up to 32 Ft.
- Waterproof, submersible under water
- Bottom, Side and End Feed options
- UL Listed

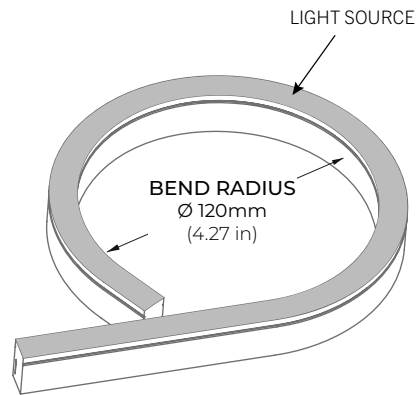
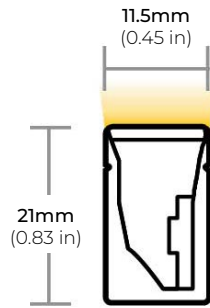


MODEL	LENS	COLOR TEMP	VOLTAGE	LENGTH	POWER FEED	FEED LENGTH	
LNT-45BK	F Flat	<b>22K</b> 2700K	<b>24</b> 24V DC	Please refer to page 5 for exact lengths with corresponding ordering codes.	<b>BF</b> Bottom Feed	<b>HW3</b> 3 Ft. Power Feed	
		<b>27K</b> 2700K				<b>HW10</b> 10 Ft. Power Feed	
		<b>30K</b> 3000K				<b>HW15</b> 15 Ft. Power Feed	
		<b>35K</b> 3500K				<b>EF</b> End Feed	
		<b>40K</b> 4000K					<b>HW30</b> 30 Ft. Power Feed
		<b>50K</b> 5000K					<b>HW50</b> 50 Ft. Power Feed
		<b>60K</b> 6000K					

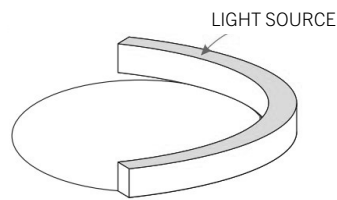
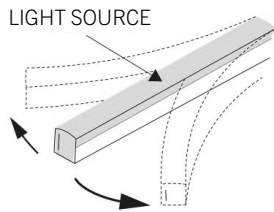
# LNT-45 BLACK

## 3.7W IP67/68 FLEXIBLE LED NEON SERIES

### DIMENSIONS



#### HORIZONTAL BEND



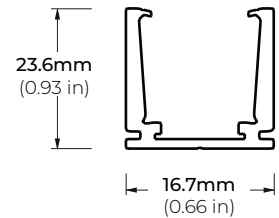
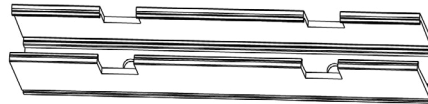
\* LED strip only bends along horizontal axis. Bending the LED strip vertically (perpendicular) to the light surface risks damage to the LED strip. Do **NOT** bend more than the indicated bend radius (shown above). Doing so will damage the LED strip.

### COMPATIBLE ACCESSORIES

#### SELF LOCKING ALUMINUM PROFILE

LNT45BK-AC2  
2" PROFILE

LNT45BK-AC39  
39" PROFILE



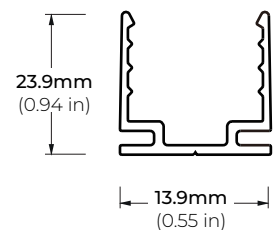
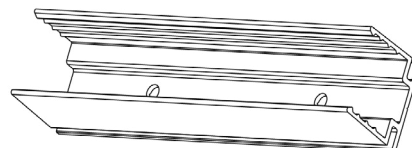
#### FLEXIBLE ALUMINUM CHANNEL

LNT45-AFX  
39" CHANNEL



#### PLASTIC PROFILE

LNT45BK-PC39  
39" PROFILE

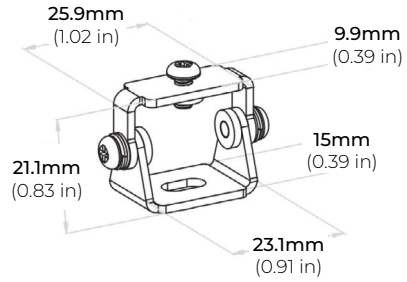


# LNT-45 BLACK

## 3.7W IP67/68 FLEXIBLE LED NEON SERIES

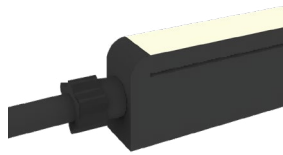
### COMPATIBLE ACCESSORIES

LNT45-BKT-ADJ  
ADJUSTABLE BRACKET

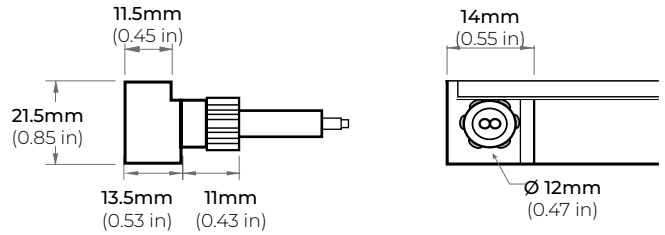
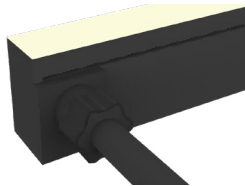


### IP67/ 68 POWER FEED

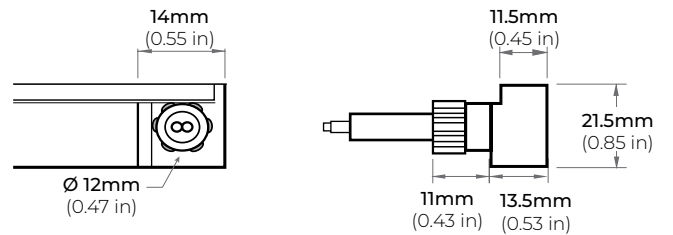
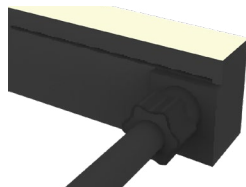
EF  
END FEED



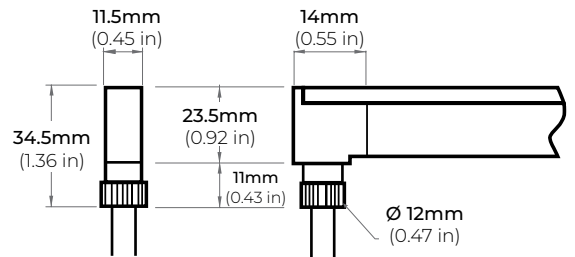
SFL  
SIDE FEED LEFT



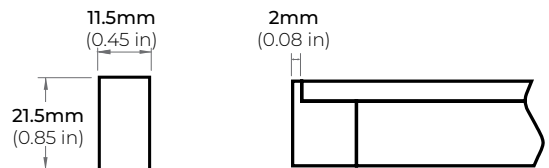
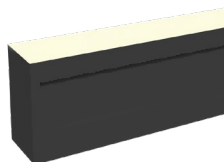
SFR  
SIDE FEED RIGHT



BF  
BOTTOM FEED



EC  
END CAP



# LNT-45 BLACK

## 3.7W IP67/68 FLEXIBLE LED NEON SERIES

### CUTTING LENGTH CODES

LNT-45BK Series is cuttable every 2.19" (5.6CM). Please refer to the chart below to determine actual lengths once LED is cut versus actual lengths required or specified.

Total Length Calculation = Order Code Length + End Feed option Length  
**Example: 33.3" Total Length = Order Code 15 (32.85") + (0.45") End Feed**

POWER FEED OPTION	IP67/ 68
END FEED	0.45"
BOTTOM FEED	0.55"
SIDE FEED	0.55"

### CUTTING LENGTH INCREMENT TABLE

CODE	LENGTH (CM)	LENGTH (IN)
1	5.6	2.19
2	11.2	4.38
3	16.8	6.57
4	22.4	8.76
5	28	10.95
6	33.6	13.14
7	39.2	15.33
8	44.8	17.52
9	50.4	19.71
10	56	21.9
11	61.6	24.09
12	67.2	26.28
13	72.8	28.47
14	78.4	30.66
15	84	32.85
16	89.6	35.04
17	95.2	37.23
18	100.8	39.42
19	106.4	41.61
20	112	43.8
21	117.6	45.99
22	123.2	48.18
23	128.8	50.37
24	134.4	52.56
25	140	54.75
26	145.6	56.94
27	151.2	59.13
28	156.8	61.32
29	162.4	63.51
30	168	65.7
31	173.6	67.89
32	179.2	70.08
33	184.8	72.27
34	190.4	74.46
35	196	76.65
36	201.6	78.84
37	207.2	81.03
38	212.8	83.22
39	218.4	85.41
40	224	87.6

CODE	LENGTH (CM)	LENGTH (IN)
41	229.6	89.79
42	235.2	91.98
43	240.8	94.17
44	246.4	96.36
45	252	98.55
46	257.6	100.74
47	263.2	102.93
48	268.8	105.12
49	274.4	107.31
50	280	109.5
51	285.6	111.69
52	291.2	113.88
53	296.8	116.07
54	302.4	118.26
55	308	120.45
56	313.6	122.64
57	319.2	124.83
58	324.8	127.02
59	330.4	129.21
60	336	131.4
61	341.6	133.59
62	347.2	135.78
63	352.8	137.97
64	358.4	140.16
65	364	142.35
66	369.6	144.54
67	375.2	146.73
68	380.8	148.92
69	386.4	151.11
70	392	153.3
71	397.6	155.49
72	403.2	157.68
73	408.8	159.87
74	414.4	162.06
75	420	164.25
76	425.6	166.44
77	431.2	168.63
78	436.8	170.82
79	442.4	173.01
80	448	175.2

CODE	LENGTH (CM)	LENGTH (IN)
81	453.6	177.39
82	459.2	179.58
83	464.8	181.77
84	470.4	183.96
85	476	186.15
86	481.6	188.34
87	487.2	190.53
88	492.8	192.72
89	498.4	194.91
90	504	197.1
91	509.6	199.29
92	515.2	201.48
93	520.8	203.67
94	526.4	205.86
95	532	208.05
96	537.6	210.24
97	543.2	212.43
98	548.8	214.62
99	554.4	216.81
100	560	219

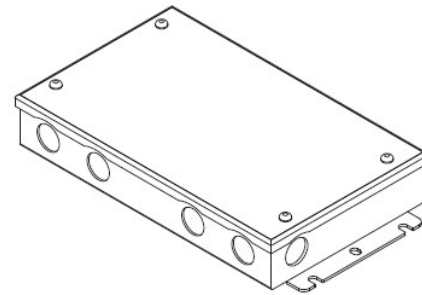
# LNT-45 BLACK

## 3.7W IP67/68 FLEXIBLE LED NEON SERIES

### COMPATIBLE TRANSFORMERS

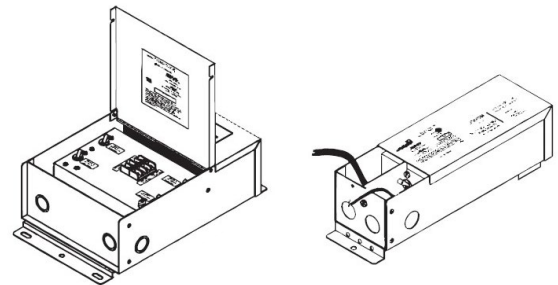
#### PSDL SERIES TRIAC DIMMABLE

PSDL-30W-24V	CLASS 2	6.5" X 3.63" X 1.58"
PSDL-60W-24V	CLASS 2	7.4" X 3.63" X 1.58"
PSDL-96W-24V	CLASS 2	8.67" X 3.67 X 1.62"
PSDL-150W-24V		10.25" X 4.06" X 1.82"
PSDL-192W-24V	CLASS 2	11" X 4" X 1.82"
PSDL-200W-24V		10.25" X 4.06" X 1.82"
PSDL-288W-24V	CLASS 2	11.85" X 4.25" X 1.82"
PSDL-300W-24V		10.25" X 4.06" X 1.82"



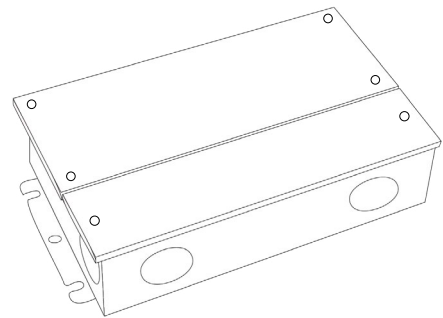
#### PSDH SERIES HIGH PERFORMANCE MAGNETIC LOW VOLTAGE (MLV)

PSDH-48W-24V	CLASS 2	11.25" X 3.38" X 3.38"
PSDH-96W-24V	CLASS 2	11.25" X 3.38" X 3.37"
PSDH-288W-24V	CLASS 2	14.25" X 8.43" X 4.43"



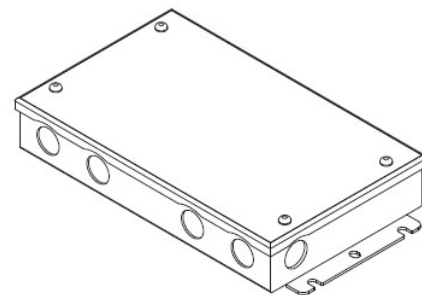
#### PSRX SERIES 4-IN-1 DIMMING DRIVER W/ JUNCTION BOX

PSRX-30W-24V-UNV	CLASS 2	6.5" X 3.7" X 1.57"
PSRX-60W-24V-UNV	CLASS 2	7.4" X 3.72" X 1.57"
PSRX-96W-24V-UNV	CLASS 2	8.66" X 3.72" X 1.57"
PSRX-150W-24V-UNV		10.24" X 4.13" X 1.77"
PSRX-200W-24V-UNV		10.24" X 4.13" X 1.77"
PSRX-300W-24V-UNV		10.94" X 4.33" X 1.77"



#### PSVT SERIES 0-10V DIMMING WITH JUNCTION BOX

PSVT-60W-24V-UNV-010	CLASS 2	7.4" X 3.72" X 1.57"
PSVT-96W-24V-UNV-010	CLASS 2	8.66" X 3.72" X 1.57"
PSVT-200W-24V-UNV-010		10.24" X 4.13" X 1.77"
PSVT-288W-24V-UNV-010	CLASS 2	11.85" X 4.25" X 1.81"
PSVT-300W-24V-UNV-010		10.94" X 4.33" X 1.77"



# LNT-45 BLACK

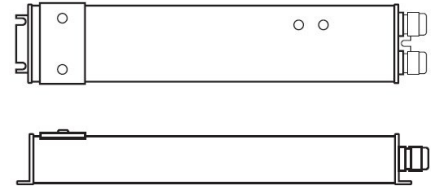
## 3.7W IP67/68 FLEXIBLE LED NEON SERIES

### COMPATIBLE TRANSFORMERS

#### PSDE SERIES

0-10V DIMMING W/ JUNCTION BOX

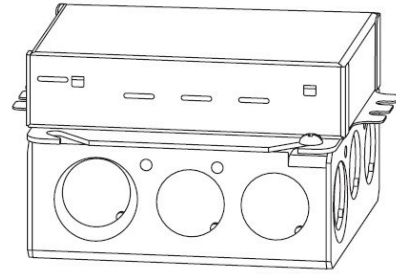
PSDE-60W-24V-010-JB	CLASS 2	12.1" X 2.36" X 1.4"
PSDE-96W-24V-010-JB	CLASS 2	12.1" X 2.36" X 1.4"



#### LUTRON 1%

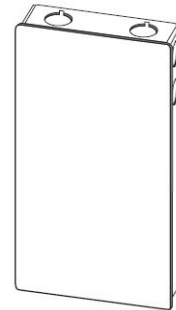
2 OR 3-WIRE DIMMING

LTEA4U1UKL-CV240	CLASS 2	4.89" X 4" X 2.62"
L3DA4U1UKL-CV240	CLASS 2	4.89" X 4" X 2.62"



#### LUTRON 1%

PSDE-96W-24V-ECO	CLASS 2	10.5" X 3.0" X 2.0"
------------------	---------	---------------------



### COMPATIBLE NON-DIMMING DRIVERS

#### PSHK SERIES

NON-DIMMING CONSTANT VOLTAGE WITH JUNCTION BOX

PSHK-30W-24V	CLASS 2	6.5" X 3.6" X 1.02"
PSHK-60W-24V	CLASS 2	7.4" X 3.62" X 1.02"
PSHK-96W-24V	CLASS 2	8.66" X 3.66" X 1.61"
PSHK-150W-24V		10.24" X 4.06" X 1.81"
PSHK-200W-24V		10.24" X 4.06" X 1.81"
PSHK-288W-24V	CLASS 2	11.85" X 4.25" X 1.82"
PSHK-300W-24V		10.24" X 4.25" X 1.81"

