

RGB CT-550

RGBW WIRELESS RECEIVER/ CONTROLLER SYSTEM

Project _____

Location _____

Quote/ Ref # _____

The **RGB CT-550** Wireless Receiver & Control System controls up to 4 independent zones of RGBW (Red, Green, Blue, and White) light. With the addition of white light, brighter colors can be achieved as well as the introduction of the pastel range, which will satisfy color requirements for the most discerning lighting designers.



SPECIFICATIONS

INPUT VOLTAGE	DC5V ~ DC24V
POWER CAPACITY	100W (5V) 240W (12V) 480W (24V)
NO. CHANNELS	4-Zone Control
OUTPUT CURRENT (MAX)	5A per Channel (20A Total)
REMOTE DISTANCE	50M (Line of Sight)
OPERATING TEMPERATURE	-22°F (-30°C) ~ 131°F (55°C)
CERTIFICATIONS	RoHS, CE
PROTECTION	Reverse connection protection, Over Current, Over-Heat, Short Circuit
WORKING FREQUENCY	2.4 GHz
REMOTE DIMENSIONS	6.38 x 1.65 x 0.59" (LxWxH)
REMOTE WEIGHT	0.44lbs

MODEL NO.

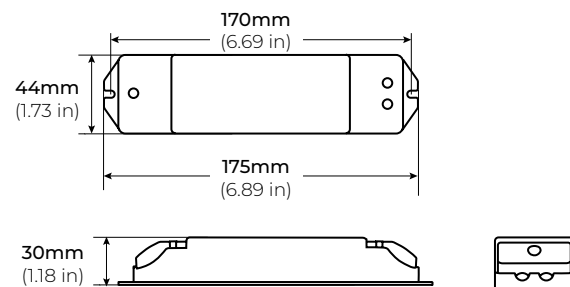
RGB-CT550	Wireless Receiver
RGB-CT550RX	Wireless Remote (Sold Separately)

FEATURES

- RGB/ RGBW wireless zone receiver
- 2.4GHz Wireless Signal
- Color Wheel picker
- Customizable 4 Independent Zones
- Remote range up to 50M
- Wireless remote sold separately

DIMENSIONS

RGB CT-550



RGB CT-550RX

