

LNT-65 SPA RGBW

2W SAUNA/ STEAM RATED FLEXIBLE LED NEON SERIES

Project _____
Location _____
Quote/ Ref # _____

The **LNT-65 SPA RGBW** is a high performance flexible LED fixture designed for use in a sauna/steam environment. Designed to resist high temperatures with its adaptive constant current control built-in feature. It is a flexible strip light that can bend around contours or tight curves horizontally or vertically without being damaged.



SPECIFICATIONS

INPUT VOLTAGE	24V DC Constant Voltage
POWER CONSUMPTION	2W per Ft.
LUMEN OUTPUT	242 Lm/ Ft. <i>(147 Lm/Ft.— RGB) 95 Lm/Ft.— White)</i>
CRI	88+
COLOR TEMPERATURE	RGBW27K/ RGBW30K/ RGBW40K
DIMMING/ CONTROL	DMX
MAXIMUM RUN LENGTH	32 Ft.
CUTTABLE	Every 83.31mm (3.28 in)
STORAGE TEMPERATURE	-40°F (-40°C) to 176°F (80°C)
OPERATING TEMPERATURE	-4°F (-20°C) to 194°F (90°C)
BEAM ANGLE	160°
LED CHIP	NICHIA
HUMIDITY	0-95% Non Condensing
IP RATING	IP67
CERTIFICATIONS	UL Listed
LUMEN MAINTENANCE	50,000 Hrs.

FEATURES

- Sauna/ Steam rated for use in higher temperatures
- High color consistency and smooth illumination
- Multiple CCT options available
- Continuous run length up to 32 Ft.
- Bottom, Side and End Feed options

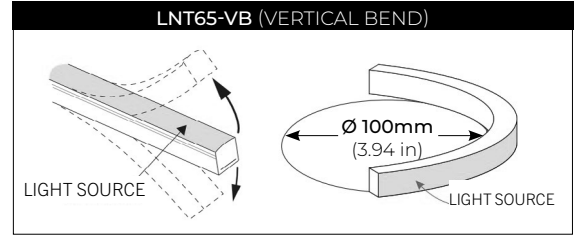
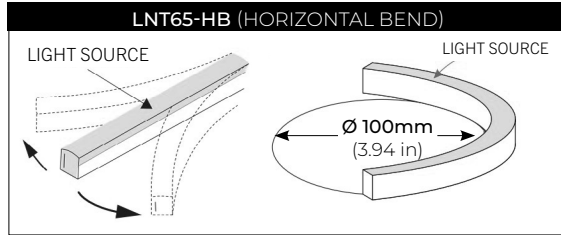
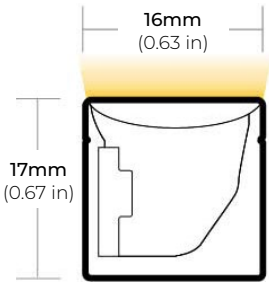


MODEL	SURFACE	COLOR TEMP	VOLT	LENGTH	POWER FEED	FEED LENGTH
LNT-65SPA	HB Horizontal Bend	RGBW27K RGB+2700K	24 24V DC	Please refer to page 4-5 for exact lengths with corresponding ordering codes.	IP67BF Bottom Feed	HW3 3 Ft. Power Feed
	VB Vertical Bend	RGBW30K RGB+2700K			IP67SFL Side Feed Left	HW10 10 Ft. Power Feed
		RGBW40K RGB+4000K			IP67SFR Side Feed Right	HW15 15 Ft. Power Feed
					IP67EF End Feed	HW30 30 Ft. Power Feed
					HW50 50 Ft. Power Feed	

LNT-65 SPA RGBW

2W SAUNA/ STEAM RATED FLEXIBLE LED NEON SERIES

DIMENSIONS

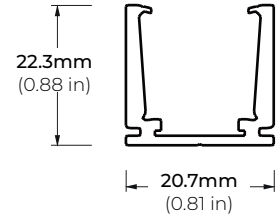


COMPATIBLE ACCESSORIES

SELF LOCKING ALUMINUM PROFILE

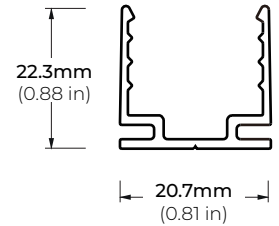
LNT65-AC2
2" PROFILE

LNT65-AC39
39" PROFILE

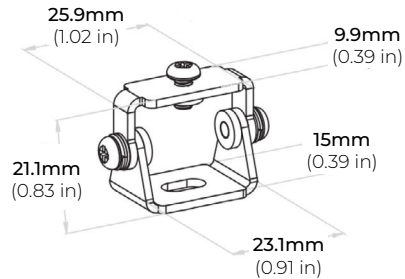


PLASTIC PROFILE

LNT65-PC39
39" PROFILE



LNT65-BKT-ADJ
ADJUSTABLE BRACKET

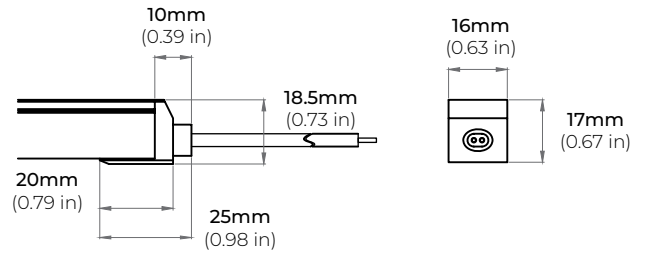


LNT-65 SPA RGBW

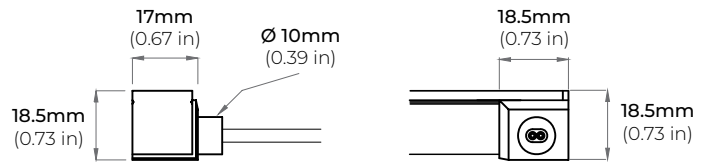
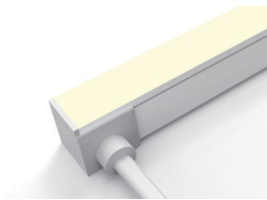
2W SAUNA/ STEAM RATED FLEXIBLE LED NEON SERIES

IP67 POWER FEED

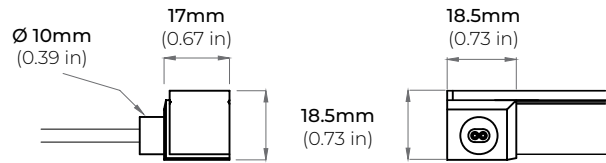
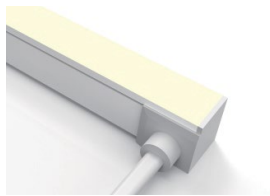
IP67EF
END FEED



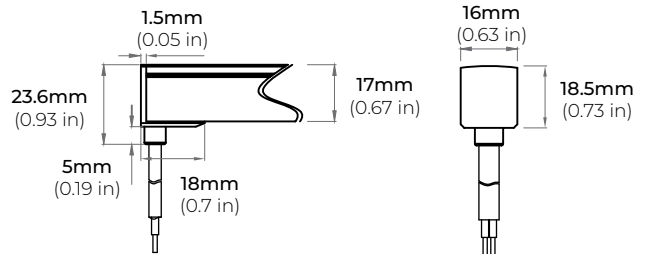
IP67SFL
SIDE FEED LEFT



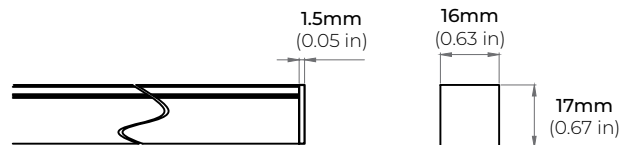
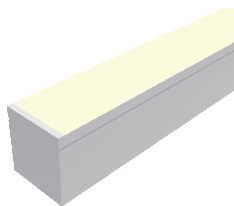
IP67SFR
SIDE FEED RIGHT



IP67BF
BOTTOM FEED



LNT65-EC
END CAP



LNT-65 SPA RGBW



2W SAUNA/ STEAM RATED FLEXIBLE LED NEON SERIES

CUTTING LENGTH CODES

LNT-65 Series is cuttable every **3.28" (8.33CM)**. Please refer to the chart below to determine actual lengths once LED is cut versus actual lengths required or specified.

Total Length Calculation = Order Code Length + End Feed option Length
Example: 99.05" Total Length = Order Code 30 (98.4") + (0.65") IP67 Side Feed

* Optional lead wire lengths available: **3Ft., 10Ft., 16Ft., 32Ft., 50Ft.**

POWER FEED OPTION	IP67
END FEED	0.65"
BOTTOM FEED	0.65"
SIDE FEED	0.65"

CUTTING LENGTH INCREMENT TABLE

CODE	LENGTH (CM)	LENGTH (IN)
3	24.99	9.84
4	33.32	13.12
5	41.65	16.4
6	49.98	19.68
7	58.31	22.96
8	66.64	26.24
9	74.97	29.52
10	83.3	32.8
11	91.63	36.08
12	99.96	39.36
13	108.29	42.64
14	116.62	45.92
15	124.95	49.2
16	133.28	52.48
17	141.61	55.76
18	149.94	59.04
19	158.27	62.32
20	166.6	65.6
21	174.93	68.88
22	183.26	72.16
23	191.59	75.44
24	199.92	78.72
25	208.25	82
26	216.58	85.28
27	224.91	88.56
28	233.24	91.84
29	241.57	95.12
30	249.9	98.4
31	258.23	101.68
32	266.56	104.96
33	274.89	108.24
34	283.22	111.52
35	291.55	114.8
36	299.88	118.08
37	308.21	121.36
38	316.54	124.64
39	324.87	127.92
40	333.2	131.2
41	341.53	134.48
42	349.86	137.76

CODE	LENGTH (CM)	LENGTH (IN)
43	358.19	141.04
44	366.52	144.32
45	374.85	147.6
46	383.18	150.88
47	391.51	154.16
48	399.84	157.44
49	408.17	160.72
50	416.5	164
51	424.83	167.28
52	433.16	170.56
53	441.49	173.84
54	449.82	177.12
55	458.15	180.4
56	466.48	183.68
57	474.81	186.96
58	483.14	190.24
59	491.47	193.52
60	499.8	196.8
61	508.13	200.08
62	516.46	203.36
63	524.79	206.64
64	533.12	209.92
65	541.45	213.2
66	549.78	216.48
67	558.11	219.76
68	566.44	223.04
69	574.77	226.32
70	583.1	229.6
71	591.43	232.88
72	599.76	236.16
73	608.09	239.44
74	616.42	242.72
75	624.75	246
76	633.08	249.28
77	641.41	252.56
78	649.74	255.84
79	658.07	259.12
80	666.4	262.4
81	674.73	265.68
82	683.06	268.96

CODE	LENGTH (CM)	LENGTH (IN)
83	691.39	272.24
84	699.72	275.52
85	708.05	278.8
86	716.38	282.08
87	724.71	285.36
88	733.04	288.64
89	741.37	291.92
90	749.7	295.2
91	758.03	298.48
92	766.36	301.76
93	774.69	305.04
94	783.02	308.32
95	791.35	311.6
96	799.68	314.88
97	808.01	318.16
98	816.34	321.44
99	824.67	324.72
100	833	328
101	841.33	331.28
102	849.66	334.56
103	857.99	337.84
104	866.32	341.12
105	874.65	344.4
106	882.98	347.68
107	891.31	350.96
108	899.64	354.24
109	907.97	357.52
110	916.3	360.8
111	924.63	364.08
112	932.96	367.36
113	941.29	370.64
114	949.62	373.92
115	957.95	377.2
116	966.28	380.48
117	974.61	383.76
118	982.94	387.04
119	991.27	390.32
120	999.6	393.6
121	1007.93	396.88
122	1016.26	400.16

LNT-65 SPA RGBW

2W SAUNA/ STEAM RATED FLEXIBLE LED NEON SERIES

CUTTING LENGTH CODES (CONT.)

LNT-65 Series is cuttable every **3.28" (8.33CM)**. Please refer to the chart below to determine actual lengths once LED is cut versus actual lengths required or specified.

Total Length Calculation = Order Code Length + End Feed option Length
Example: 66.32" Total Length = Order Code 30 (65.67") + (0.65") IP67 Side Feed

* Optional lead wire lengths available: 3Ft., 10Ft., 16Ft., 32Ft., 50Ft.

POWER FEED OPTION	IP67
END FEED	0.65"
BOTTOM FEED	0.65"
SIDE FEED	0.65"

CUTTING LENGTH INCREMENT TABLE

CODE	LENGTH (CM)	LENGTH (IN)
123	1024.59	403.44
124	1032.92	406.72
125	1041.25	410
126	1049.58	413.28
127	1057.91	416.56
128	1066.24	419.84
129	1074.57	423.12
130	1082.9	426.4
131	1091.23	429.68
132	1099.56	432.96
133	1107.89	436.24
134	1116.22	439.52
135	1124.55	442.8
136	1132.88	446.08
137	1141.21	449.36
138	1149.54	452.64
139	1157.87	455.92
140	1166.2	459.2
141	1174.53	462.48
142	1182.86	465.76
143	1191.19	469.04
144	1199.52	472.32
145	1207.85	475.6
146	1216.18	478.88
147	1224.51	482.16
148	1232.84	485.44
149	1241.17	488.72
150	1249.5	492
151	1257.83	495.28
152	1266.16	498.56
153	1274.49	501.84
154	1282.82	505.12
155	1291.15	508.4
156	1299.48	511.68
157	1307.81	514.96
158	1316.14	518.24
159	1324.47	521.52
160	1332.8	524.8
161	1341.13	528.08
162	1349.46	531.36

CODE	LENGTH (CM)	LENGTH (IN)
163	1357.79	534.64
164	1366.12	537.92
165	1374.45	541.2
166	1382.78	544.48
167	1391.11	547.76
168	1399.44	551.04
169	1407.77	554.32
170	1416.1	557.6
171	1424.43	560.88
172	1432.76	564.16
173	1441.09	567.44
174	1449.42	570.72
175	1457.75	574
176	1466.08	577.28
177	1474.41	580.56
178	1482.74	583.84
179	1491.07	587.12
180	1499.4	590.4

LNT-65 SPA RGBW

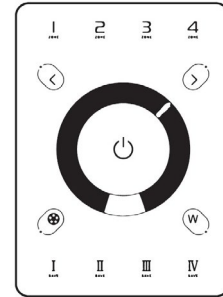
2W SAUNA/ STEAM RATED FLEXIBLE LED NEON SERIES

CONTROLLERS

RGB CT600

MULTI-FUNCTION RGBW WALL CONTROLLER

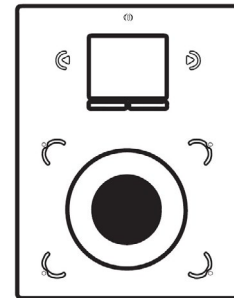
INPUT VOLTAGE 5V DC, 1A
OUTPUT SIGNAL RF 2.4GHZ + DMX512
CONTROL 4 ZONES
WORKING TEMP -20°C ~ 40°C
DIMENSIONS LxWxH (5.19"x7.08"x1.38")



RGB-SDE3

MULTI-FUNCTION RGBW WALL CONTROLLER

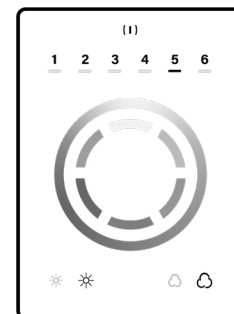
INPUT VOLTAGE 6V DC, 0.6A
OUTPUT SIGNAL DMX512 (x2)
PROGRAMMABILITY PC/ MAC/ Tablet/ Smartphone
COLOR Black/ White
CONNECTIONS USB/ Ethernet/ RS232/ CLock/ 8dry contact ports/ 5V output relay
MEMORY MicroSD Card
WORKING TEMP -20°C ~ 40°C
DIMENSIONS LxWxH (5.75"x4.17"x0.43")



RGB-SCW4

WiFi DMX WALL CONTROLLER

INPUT VOLTAGE 5 - 10V DC, 0.6A
OUTPUT SIGNAL DMX512 (x2)
PROGRAMMABILITY PC/ MAC
COLOR Black/ White
CONNECTIONS USB/ 8dry contact ports/ Open drain output (for relay)
MEMORY Built-In Flash
WORKING TEMP -10°C ~ 45°C
DIMENSIONS LxWxH (5.75"x4.17"x0.43")



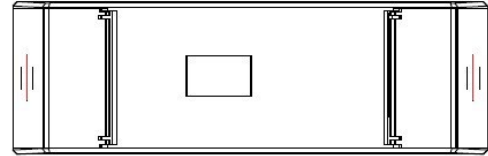
LNT-65 SPA RGBW

2W SAUNA/ STEAM RATED FLEXIBLE LED NEON SERIES

COMPATIBLE DMX DRIVERS

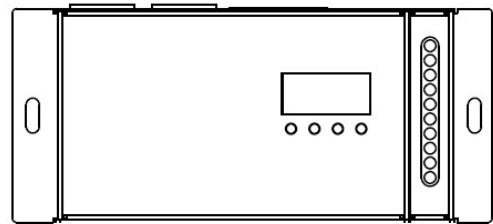
RGB-DMX-4C-RJ45 4-CHANNEL DMX DECODER

INPUT	12V-24V DC
OUTPUT CURRENT	8A X 4CH
OUTPUT POWER	240W(12V), 720W(24V)
OUTPUT CHANNELS	3 or 4 Selectable
DIMENSIONS	LxWxH (7"x1.77"x0.75")



RGB-DMX-5C-XLR 5-CHANNEL DMX DECODER

INPUT	12V-24V-36V DC
OUTPUT VOLTAGE	12V-24V DC
OUTPUT CURRENT	8A X 5CH
OUTPUT WATTAGE	5 x (96W ~ 192W)
DIMENSIONS	LxWxH (6.45"x2.87"x1.5")



COMPATIBLE NON-DIMMING DRIVERS

PSHK SERIES NON-DIMMING CONSTANT VOLTAGE WITH JUNCTION BOX

PSHK-30W-24V	CLASS 2	6.5" X 3.6" X 1.02"
PSHK-60W-24V	CLASS 2	7.4" X 3.62" X 1.02"
PSHK-96W-24V	CLASS 2	8.66" X 3.66" X 1.61"
PSHK-150W-24V		10.24" X 4.06" X 1.81"
PSHK-200W-24V		10.24" X 4.06" X 1.81"
PSHK-288W-24V	CLASS 2	11.85" X 4.25" X 1.82"
PSHK-300W-24V		10.24" X 4.25" X 1.81"

