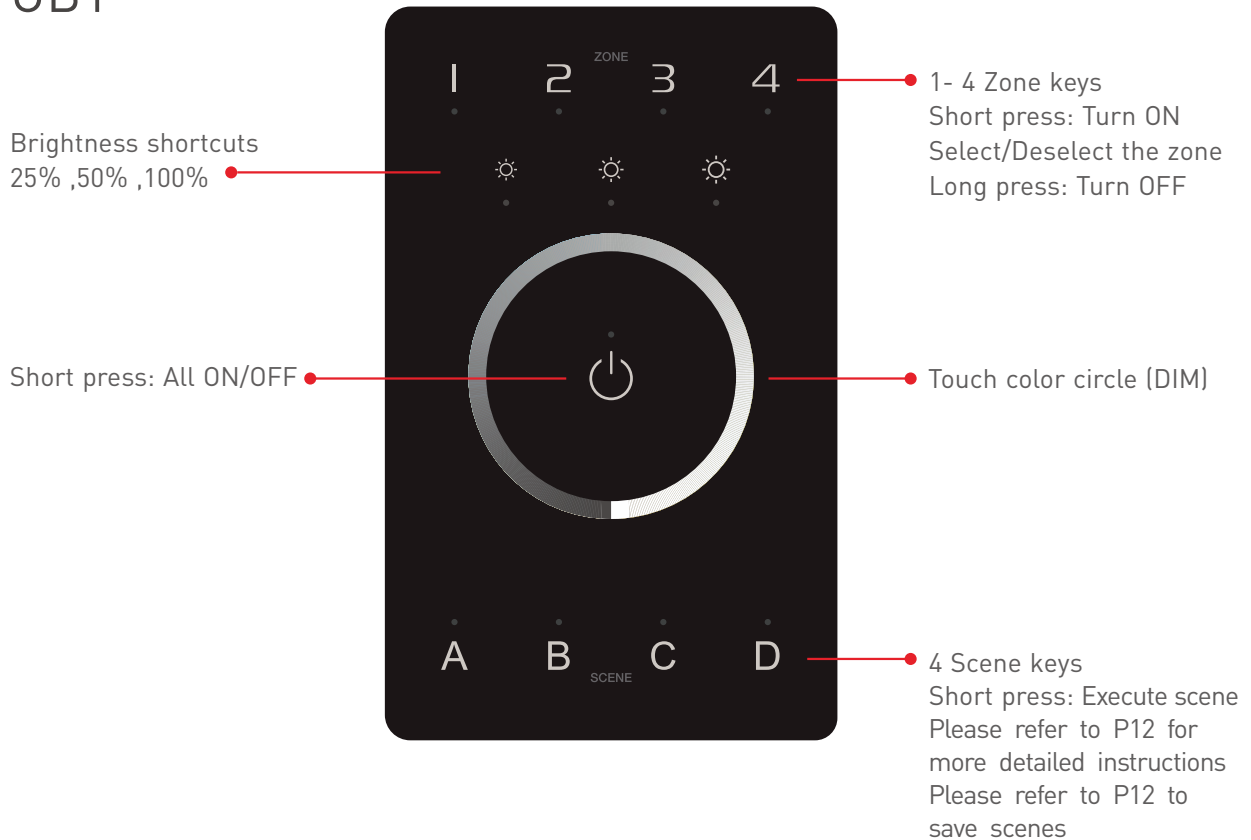
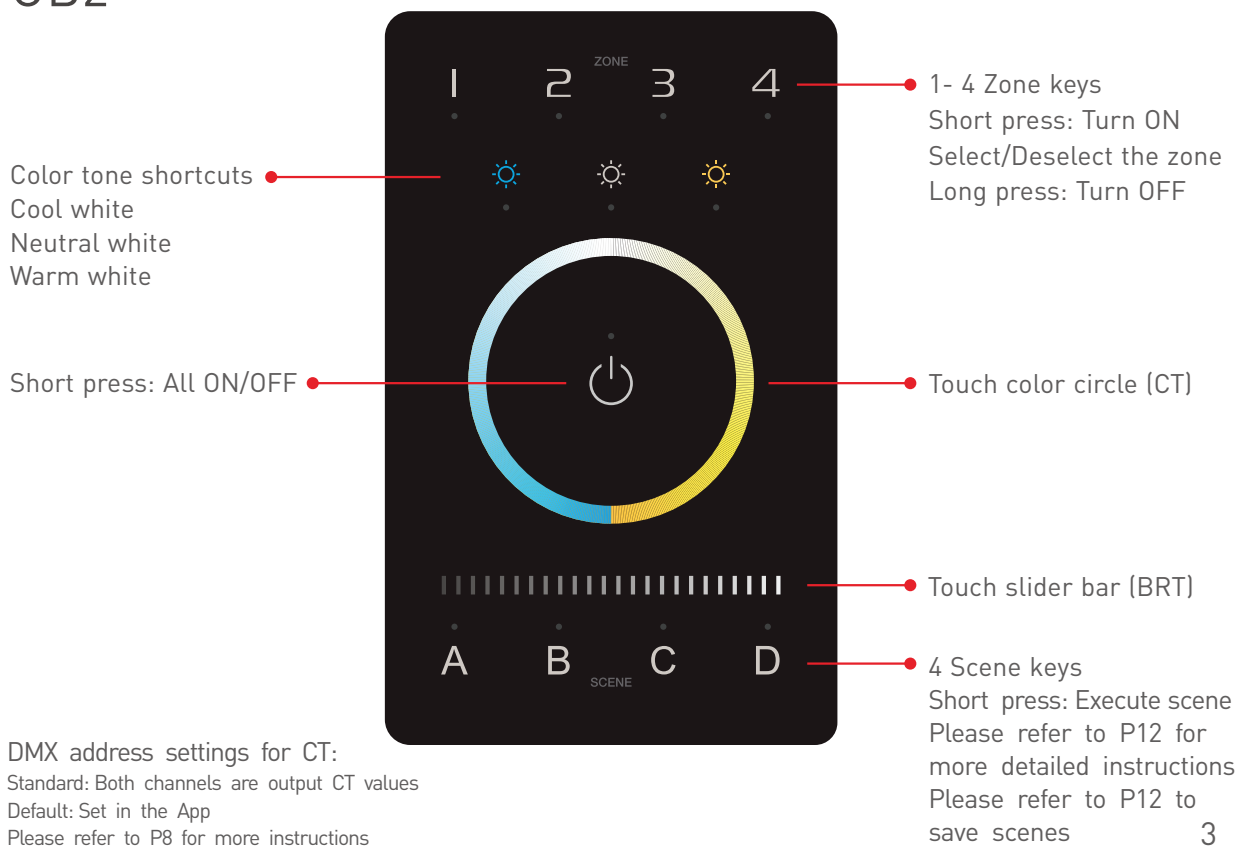


# Key Functions

## UB1



## UB2



# Key Functions

## UB4

16 modes

Short press: Play mode

Long press: Adjust speed

Short press: ON/OFF RGB

Short press: All ON/OFF

16 modes (Press "⊗" to switch)

1. 3 color jumping
2. 7 color jumping
3. White strobe
4. 7 color strobe
5. Red green gradient
6. Red blue gradient
7. Green blue gradient
8. Red yellow gradient
9. Blue purple gradient
10. Green yellow gradient
11. Blue cyan gradient
12. Red purple gradient
13. Blue white gradient
14. Yellow purple cyan gradient
15. 3 color gradient
16. Full color gradient



1- 4 Zone keys  
Short press: Turn ON  
Select/Deselect the zone  
Long press: Turn OFF

Short press: Turn ON/OFF white color  
Long press: Adjust brightness of white color

Touch color circle (RGB)

Touch slider bar (BRT)

4 Scene keys  
Short press: Execute scene  
Please refer to P12 for more detailed instructions  
Please refer to P12 to save scenes

## UB5

16 modes

Short press: Play mode

Long press: Adjust speed

Short press: ON/OFF RGB

Long press: Adjust RGB brightness

Short press: All ON/OFF

16 modes (Press "⊗" to switch)

1. 3 color jumping
2. 7 color jumping
3. White strobe
4. 7 color strobe
5. Red green gradient
6. Red blue gradient
7. Green blue gradient
8. Red yellow gradient
9. Blue purple gradient
10. Green yellow gradient
11. Blue cyan gradient
12. Red purple gradient
13. Blue white gradient
14. Yellow purple cyan gradient
15. 3 color gradient
16. Full color gradient



1- 4 Zone keys  
Short press: Turn ON  
Select/Deselect the zone  
Long press: Turn OFF

Short press: Turn ON/OFF WY  
Long press: Adjust brightness of WY

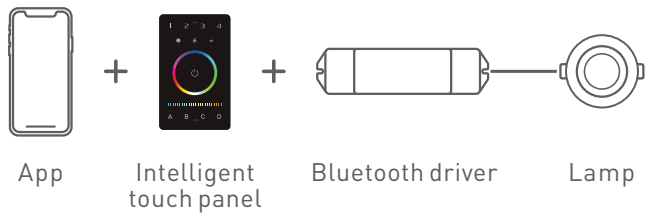
Touch color circle (RGB)

Touch slider bar (WY)

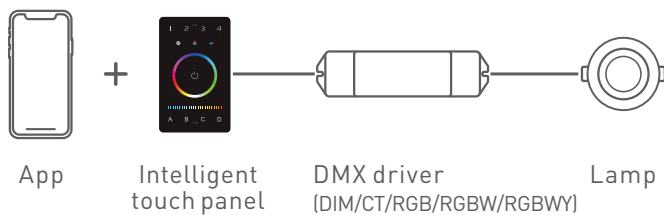
4 Scene keys  
Short press: Execute scene  
Please refer to P12 for more detailed instructions  
Please refer to P12 to save scenes

# Recommended Applications

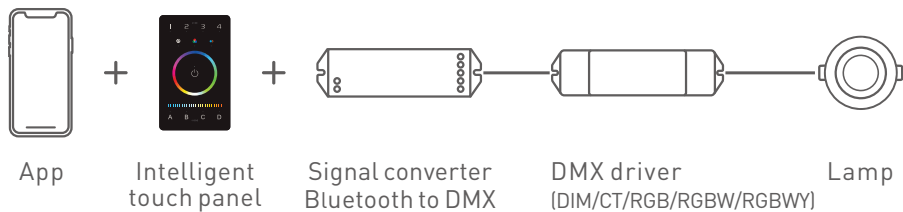
## 1. Wireless Control.



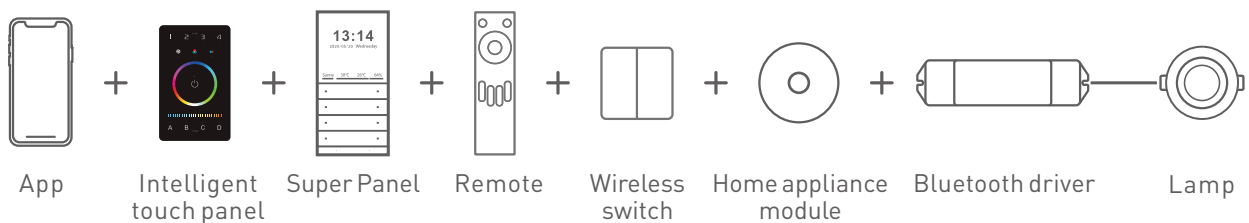
## 2. Wireless + Wired control (With reliable and stable signals).



## 3. Wireless + Wired control (Enriching different lighting applications).

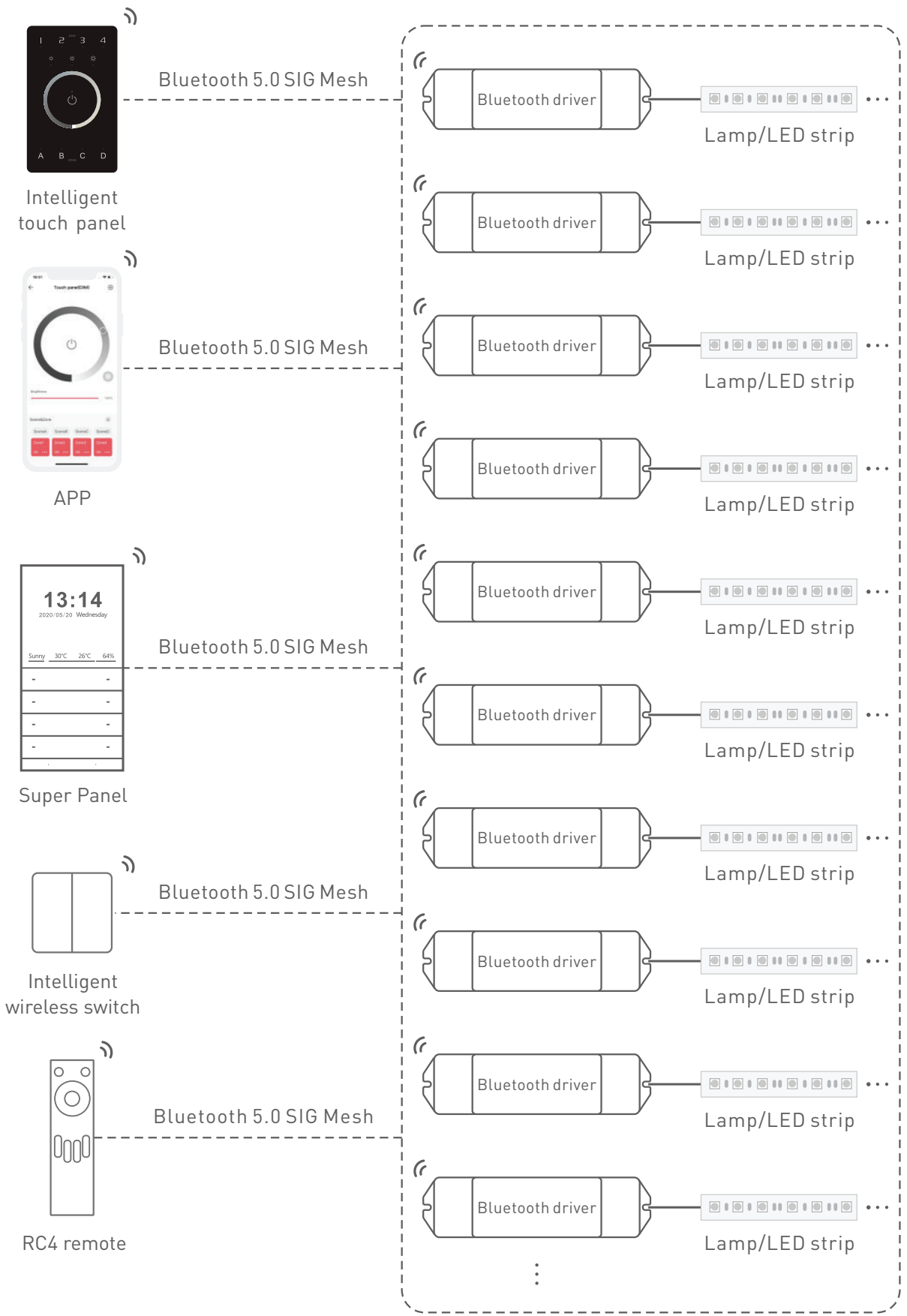


## 4. Visual control + Remote control of traditional panels.

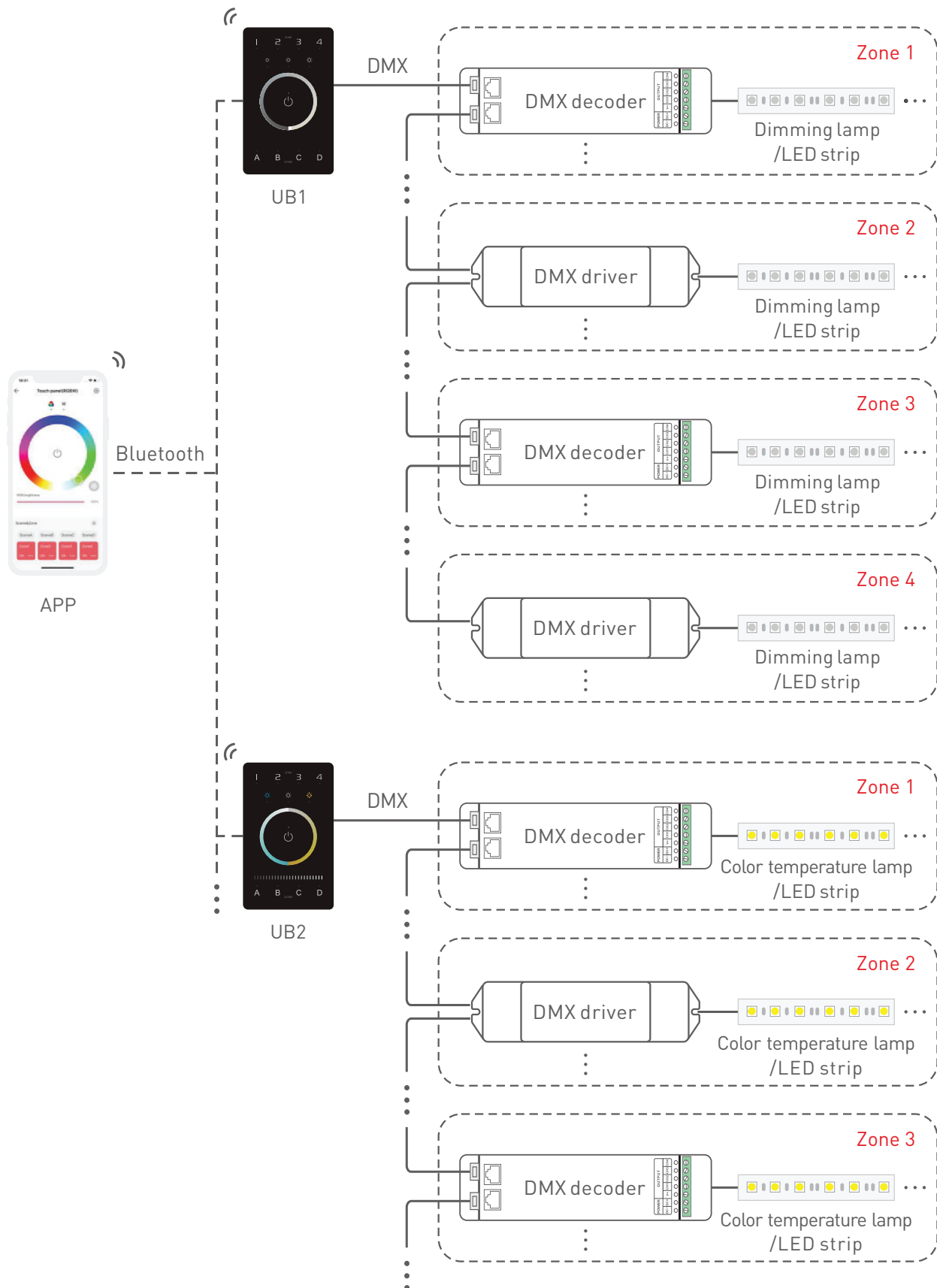


## 5. More applications of intelligent control are waiting for you to set up.

# Bluetooth Application Diagram



# DMX Application Diagram



Each zone can be installed with multiple decoders. When the total number of decoders in 4 zones exceeds 32, please add DMX signal amplifiers.

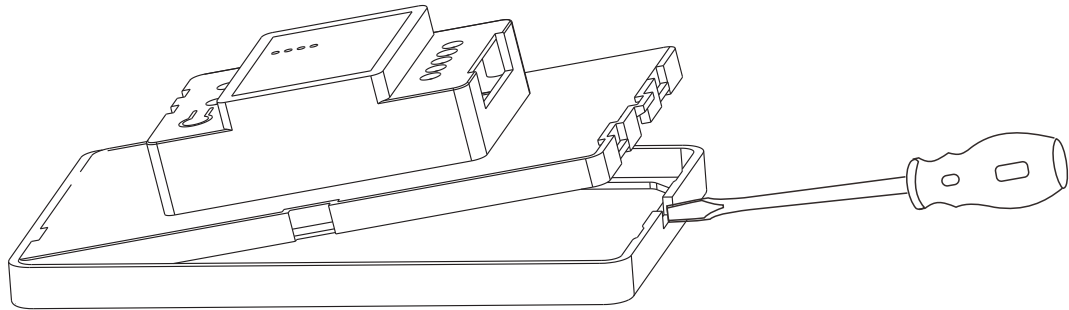
# DMX Channel Output Sheet

Address	Type	DIM	CT	CT2	RGBW	RGBWY
	Zone					
1		DIM1	C1	BRT1	R1	R1
2		DIM2	W1	CT1	G1	G1
3		DIM3	C2	BRT2	B1	B1
4		DIM4	W2	CT2	W1	W1
5		DIM1	C3	BRT3	R2	Y1
6		DIM2	W3	CT3	G2	R2
7		DIM3	C4	BRT4	B2	G2
8		DIM4	W4	CT4	W2	B2
9		DIM1	C1	BRT1	R3	W2
10		DIM2	W1	CT1	G3	Y2
11		DIM3	C2	BRT2	B3	R3
12		DIM4	W2	CT2	W3	G3
13		DIM1	C3	BRT3	R4	B3
14		DIM2	W3	CT3	G4	W3
15		DIM3	C4	BRT4	B4	Y3
16		DIM4	W4	CT4	W4	R4
17		DIM1	C1	BRT1	R1	G4
18		DIM2	W1	CT1	G1	B4
19		DIM3	C2	BRT2	B1	W4
20		DIM4	W2	CT2	W1	Y4
:		:	:	:	:	:
500		DIM4	W2	CT2	W1	Y4
:		:	:	:	:	/
512		DIM4	W4	CT4	W4	/

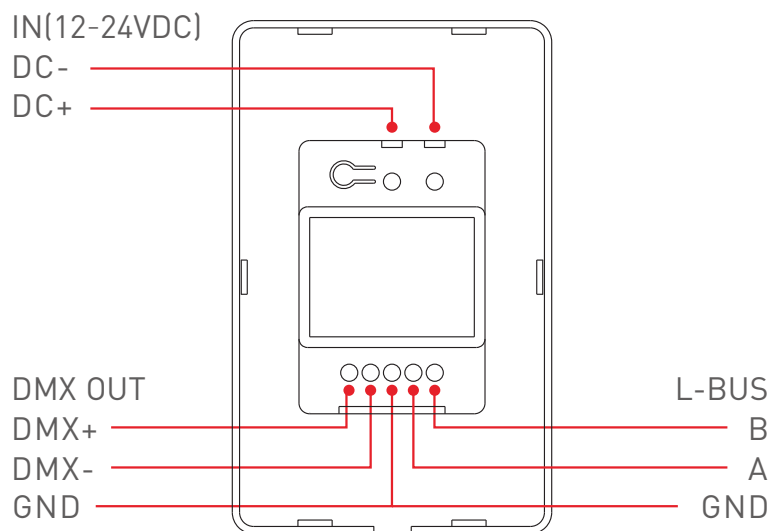
\* As shown in the sheet above, every 4 DIM addresses are circulated in 4 zones, every 8 addresses of CT1 and CT2 are circulated in 4 zones, every 16 RGBW addresses are circulated in 4 zones, every 20 RGBWY addresses are circulated in 4 zones.

# Installation Instructions

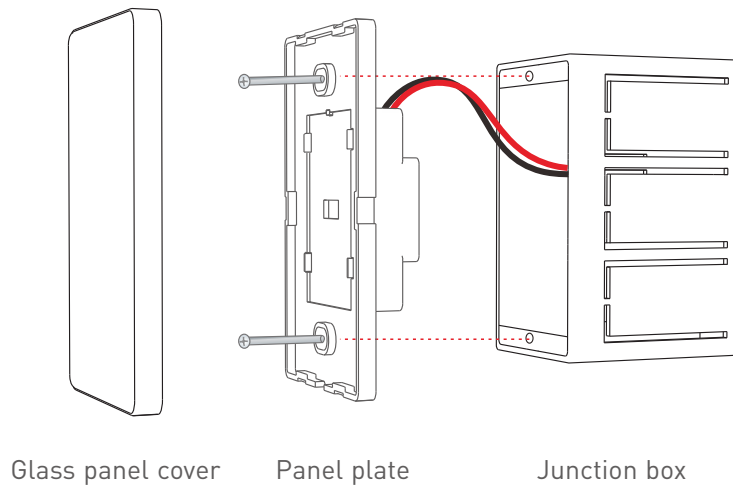
Step 1: Remove the panel plate with a flathead screwdriver, as shown below.



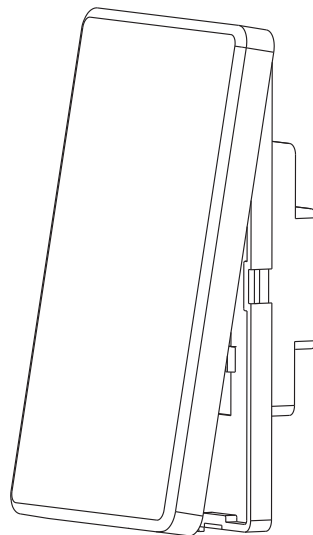
Step 2: Attach the wires to the panel, as shown in the diagram below. Please be sure to turn off the power to the circuit at the circuit breaker or fuse box before attaching the wires.



Step 3: Install the panel plate. Once the wires are attached correctly, you can gently fold any excess wire and compress the panel into the junction box. Tighten the screws to secure the panel plate to the box.



Step 4: Put the panel cover in place. Gently snap the panel cover onto the plate.



## Attentions

- Please use in spacious and open space. Avoid metal obstructions above and in front of products.
- Please use in a cool and dry environment.
- No disassembly of products so as not to affect the warranty.
- Avoid direct contact with light and heat.
- Please do not open, modify, repair or maintain products without authorization, otherwise warranties are not allowed.



# App Operating Instructions

## 1. Register an account

- 1.1 Scan the QR code below with your mobile phone and follow the prompts to complete the app installation.
- 1.2 Open the App and log in or register an account.

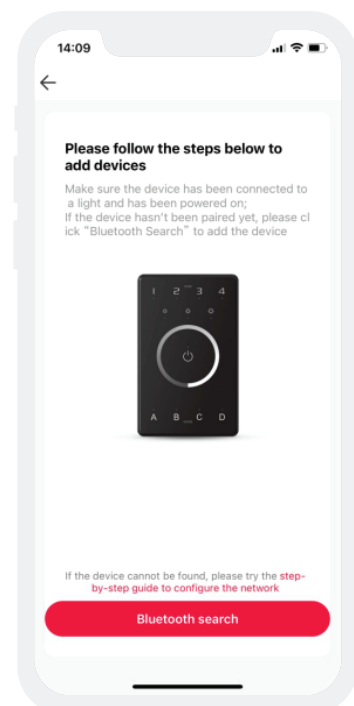
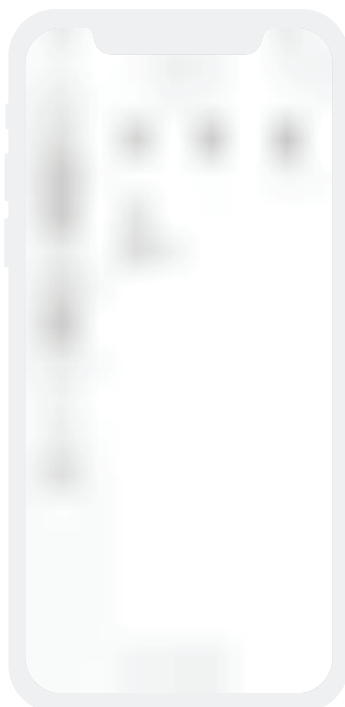
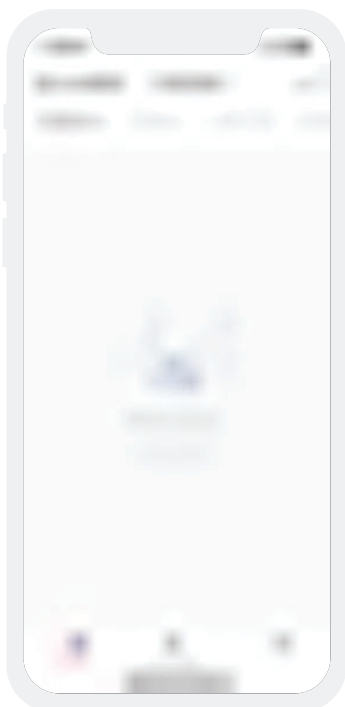


Scan and download the App

## 2. Pairing instructions

Create a home if you are a new user. Click “+” icon in the upper right corner and access the “Add device” list. Follow the prompts to add a LED driver first, then pick “LED controller-Touch panel” from the device list. Follow the prompts to activate the device, then click “Bluetooth search” to add the device.

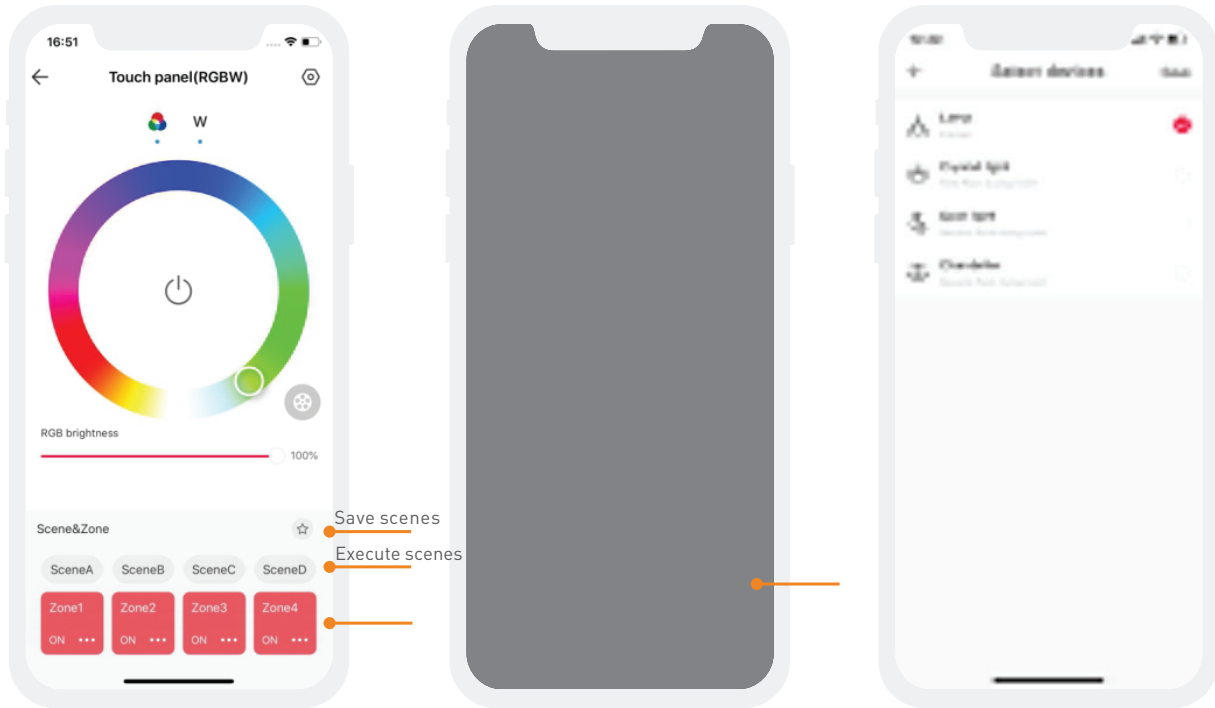
How to reset the device to factory defaults: When the panel is powered on ( the indicator light is white ), long press Key A and Key D for 6s. If all the indicator lights of the panel flash several times, it means the device has been reset to factory defaults.



### 3.How to bind lights /light groups and save scenes

After pairing, get access to the control interface and choose the button for the zone lighting you are going to edit. You can bind lights and light groups to the buttons.

Local scenes: After adjusting the zone lighting to appropriate status, click “Save” and follow the prompts to save zone lighting status in the scene. After saving, click the corresponding scene button to execute the current local lighting scene (Supporting 16 scenes currently).



### 4.How to bind a bluetooth remote/bluetooth intelligent wireless switch

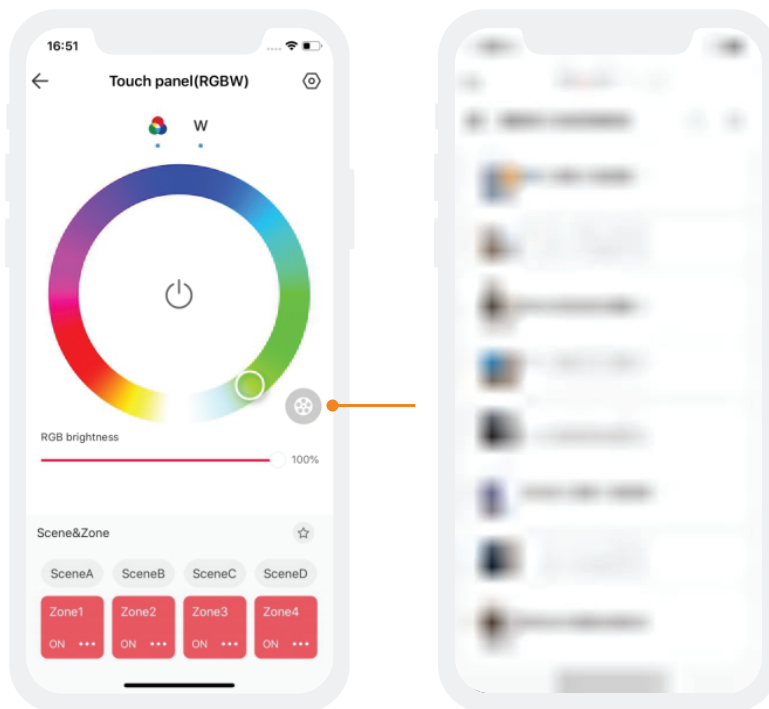
Please refer to the manual of a bluetooth remote / bluetooth intelligent wireless switch. After adding the device, access the control interface and bind the corresponding intelligent touch panels.



## 5. Normal modes and advanced modes

Normal modes: Click “Mode” icon and access the mode interface. Click the blank area of the mode and it can be executed. There are 12 editable normal modes in total which satisfy the general needs of customers(Currently, only RGBW & RGBWY support normal modes).

Advanced modes: Click the blank area of the mode and it can be executed. There are 8 editable advanced modes in total which satisfy the general needs of customers.



Edit modes: Switch to “Me” menu and click “Lighting mode settings”. After selecting the light fixture type, click the blank area of mode to get access to the editable mode interface and edit it.

