

ALP-125

Wall-Mount Linear LED System



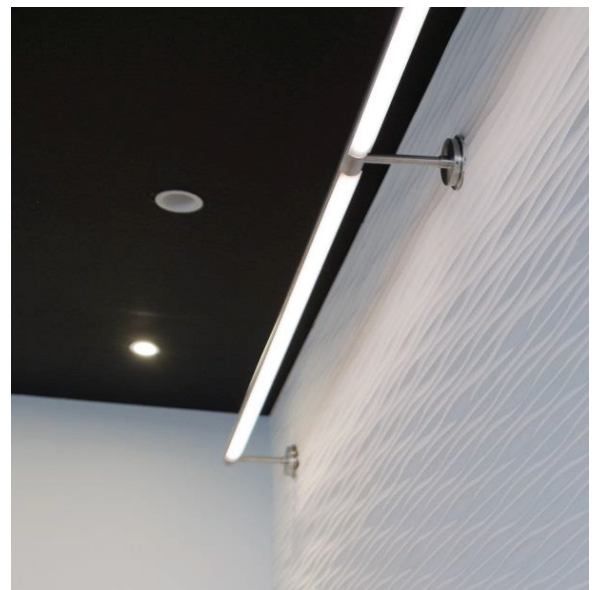
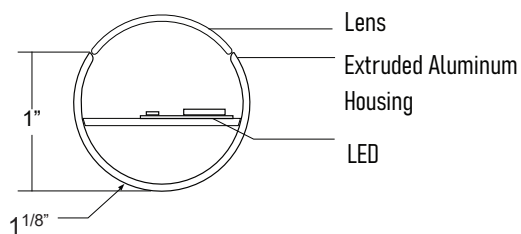
The ALP-125 is a versatile and efficient Linear LED lighting system available in different lengths and color temperatures. It features a unique design that allows it to swivel 360° and can be mounted in any orientation to direct light source towards sign, ceiling, wall or workplane. Seamless and continuous run installations deliver efficient illumination.

FEATURES

- Slim profile, modular design, solid construction
- Delivers up to 720 lumens
- Linkable up to 24 feet
- 1 1/8" inches in diameter
- Continuous 360° swivel design
- Tight, smooth fixture rotation for directional light aiming
- Exceptional light distribution and efficacy
- Multiple mounting orientations
- REMOTE MOUNTED POWER SUPPLY SOLD SEPARATELY
- CAN LINK UP TO 20'

SPECIFICATIONS

TYPE	Wall Mount
AVAILABLE LENGTHS	24", 36", 48" & 72"
FINISH	Brushed Aluminum
POWER CONSUMPTION	3.0W/Ft., 5.5W/Ft., 7W/Ft.
DIMMING	ELV / 0-10V / TRIACt (remote driver)
DRIVER	Remote Mounted (Sold Separately)
COLOR TEMP	27K / 30K / 35K / 40K / 50K
CRI	90 CRI
SWIVEL	360°
LUMEN MAINTENANCE	50,000 Hrs



ALP-125

Wall-Mount Linear LED System

STANDARD ORDERING GUIDE

Model	Fixture Length	Light Output	Color Temp	Finish	Lens	Stem Length	Mounting
ALP-125	24 24"	L2 3.0W	27 2700K	BA Brushed Aluminum	FR Frosted	STM6 6" stem	RC2 2" Wall Canopy
	36 36"	L3 5.5W	30 3000K	BK Black		STM12 12" stem	RC5 5" Wall Canopy
	48 48"	L4 7W	35 3500K	WH White		STM18 18" stem	
	72 72"		40 4000K			STM24 24" stem	
			50 5000K				

NOTES:

REMOTE MOUNTED POWER SUPPLY REQUIRED
(SOLD SEPARATELY)

Other Lumen package available, consult factory

LIGHT OUTPUT

L2	3.0 WATTS / FT. 290 LUMENS / FT.
L3	5.5 WATTS / FT. 500 LUMENS / FT.
L4	7 WATTS / FT. 720 LUMENS / FT.

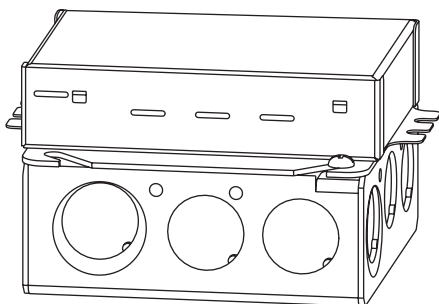
DRIVER OPTIONS

EB	PSDL Series, TRIAC / ELV dimming
D10	0~10V Dimming
HL2W	Lutron 2-Wire Dimming Driver.
HL3E	Lutron ECO 3-Wire Dimming Driver.

ALP-125

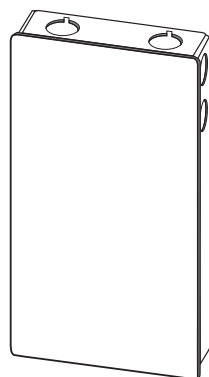
Wall-Mount Linear LED System

DRIVER OPTIONS



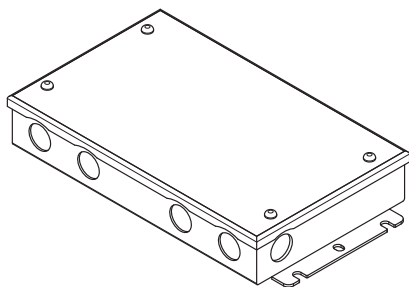
LUTRON 1% | 2 OR 3-WIRE DIMMING

LTEA4U1UKL-CV240	CLASS 2	4.0" x 1.5" x 4.0"
L3DA4U1UKL-CV240	CLASS 2	4.0" x 1.5" x 4.0"



LUTRON 1%

PSDE-96W-24V-ECO	CLASS 2	10.5" x 3.0" x 2.0"
-------------------------	---------	---------------------

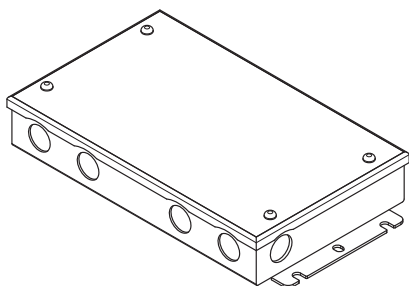


PSDL-30W-24V	CLASS 2	6.5" x 3.63" x 1.03"
PSDL-60W-24V	CLASS 2	7.4" x 3.63" x 1.03"
PSDL-96W-24V	CLASS 2	8.67" x 3.67" x 1.62"
PSDL-150W-24V		8.67" x 3.67" x 1.62"
PSDL-192W-24V	CLASS 2	10.25" x 4.06" x 1.82"
PSDL-200W-24V		10.25" x 4.06" x 1.82"
PSDL-288W-24V	CLASS 2	10.25" x 4.06" x 1.82"
PSDL-300W-24V		10.25" x 4.06" x 1.82"

ALP-125

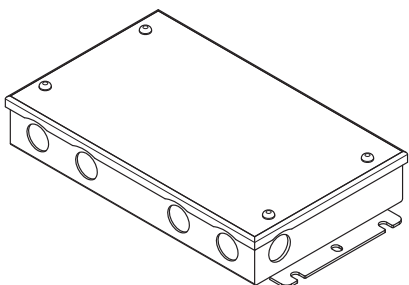
Wall-Mount Linear LED System

DRIVER OPTIONS



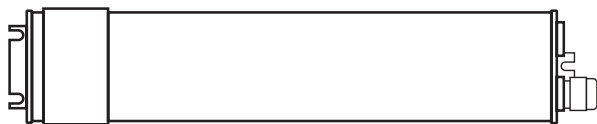
PSRX SERIES | 4-in-1 DIMMING DRIVER W/ JUNCTION BOX

PSRX-30W-24V-UNV	CLASS 2	6.5" X 3.7" X 1.57"
PSRX-60W-24V-UNV	CLASS 2	7.4" X 3.72" X 1.57"
PSRX-96W-24V-UNV	CLASS 2	10.24" X 4.13" X 1.77"
PSRX-150W-24V-UNV		10.24" X 4.13" X 1.77"
PSRX-200W-24V-UNV		10.24" X 4.13" X 1.77"
PSRX-300W-24V-UNV		10.94" X 4.33" X 1.77"



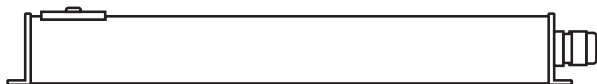
PSVT SERIES | 0-10V DIMMING DRIVER

PSVT-60W-24V	CLASS 2	7.4" X 3.72" X 1.57"
PSVT-96W-24V	CLASS 2	8.66" X 3.72" X 1.57"
PSVT-200W-24V		10.24" X 4.13" X 1.77"
PSVT-288W-24V	CLASS 2	11.85" X 4.25" X 1.81"
PSVT-300W-24V		10.94" X 4.33" X 1.77"



PSDE SERIES | 0-10V DIMMING W/ JUNCTION BOX

PSDE-60W-24V-010-JB	CLASS 2	12.1" X 2.36" X 1.4"
PSDE-96W-24V-010-JB	CLASS 2	12.1" X 2.36" X 1.4"



ALP-125

Wall-Mount Linear LED System

DIMENSIONS

