

ALP130

Surface Mount LED Profile

JOB NAME: _____
LOCATION: _____
QUOTE/REF#: _____



The **ALP-130** is an Architectural Grade LED extrusion profile designed for linear LED strips up to 21mm wide. Made from high quality aluminum, these extrusions provide superior thermal management for higher wattage LED strips and prolong the lifespan of your lighting system. This surface mount profile is manufactured with a patented frosted diffuser for maximum lumen output and wide beam distribution. These aluminum profiles are an elegant design solution for any space.

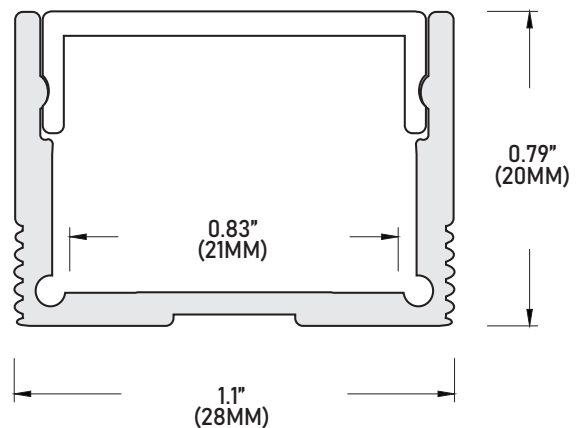
SPECIFICATIONS

| | |
|--------------------------|-------------------------|
| TYPE | Surface mount |
| AVAILABLE LENGTHS | 49.25", 84" and 98.5" |
| FINISH | Anodized Silver / Black |
| LENS OPTIONS | Frosted |
| CHANNEL | ALP-130 |
| LENS (INCLUDED) | ALP-130-LN |
| END CAP | ALP-130-EC |

FEATURES

- Compatible with LED strips up to 0.83in (21mm).
- Customizable lengths
- Low profile design
- Dissipates heat from LED strips.
- Remote mounted low-voltage power supply sold separately
- Includes standard frosted lens with each profile

DIMENSIONS



STANDARD ORDERING CODE

| Model | Length | Finish |
|--------|---------------------|--------------------------------------|
| ALP130 | 49 49.25" | SI Silver |
| | 84 84" | BK Black |
| | 98 98.5" | CU Custom (powder-coat) |

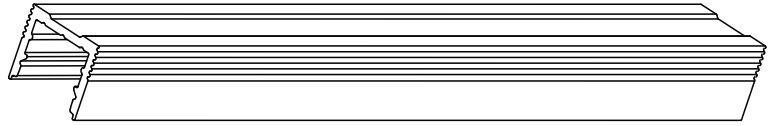
NOTE: Custom color finishes require powder coating. Allow 7 days lead time.

ALP130

Surface Mount LED Profile

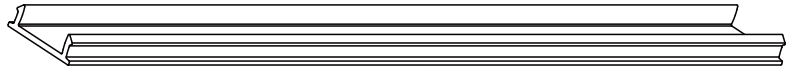
ALP-130 | Aluminum Channel

MOUNTING Surface
LENGTHS 49.25", 84" and 98.5"



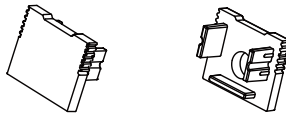
ALP-130LN | Lens Cover

TYPE Frosted (included)
LENGTHS 49.25", 84" and 98.5"



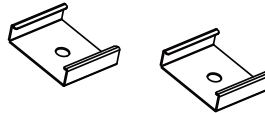
ALP-130EC | End Cap

Two end caps included with every profile



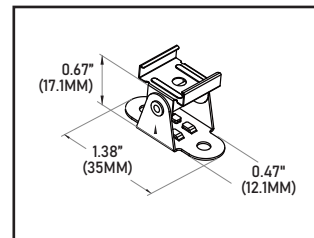
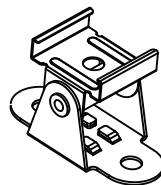
ALP-130CL | Metal Mounting Clips

Two end caps included with every profile



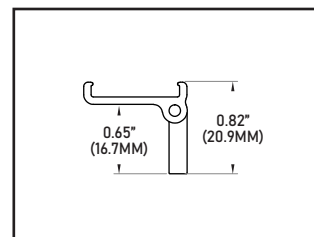
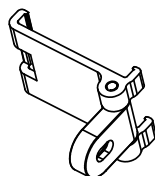
ALP-130-BKT-ADJ | Adjustable Bracket

* optional item (sold separately)



ALP-130-ASB | Adjustable Bracket

* optional item (sold separately)



ASSEMBLY

