

JOB NAME: \_\_\_\_\_  
LOCATION: \_\_\_\_\_  
QUOTE/REF#: \_\_\_\_\_



The ALP-60 is an Architectural Grade LED extrusion profile designed for linear LED strips up to 11mm wide. Made from high quality aluminum, these extrusions provide superior thermal management for higher wattage LED strips and prolong the lifespan of your lighting system. This surface mount profile is manufactured with a patented frosted diffuser for maximum lumen output and wide beam distribution. These aluminum profiles are an elegant design solution for any space.

## SPECIFICATIONS

<b>TYPE</b>	Surface mount
<b>AVAILABLE LENGTHS</b>	49.25", 84" and 98.5"
<b>FINISH</b>	Silver / Black / White
<b>LENS OPTIONS</b>	Frosted
<b>CHANNEL</b>	ALP-60
<b>LENS</b>	ALP-60-LN
<b>END CAP</b>	ALP-60-EC
<b>MOUNTING CLIPS</b>	ALP-60-CL
<b>ADJUSTABLE BRACKET (TALL)</b>	ALP-60-BKT-ADJ
<b>ADJUSTABLE BRACKET</b>	ALP-60-ASB
<b>WEIGHT</b>	5.33 lbs

Compatible with LED strips up to 12mm (0.48") wide.

LED tape light sold separately.

Frosted Lens diffuser included with every profile

2 (two) end caps included with every channel.

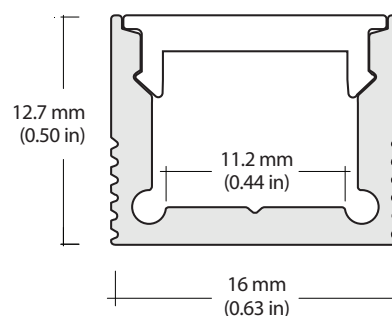
Custom color finishes available (powder-coating).

98" profile NOT available in black

## FEATURES

- Customizable
- Durable, anodized aluminum
- Protects LED systems from dust and other elements
- Slim, low profile design
- Dissipates heat from LED, prolonging its lifetime

## DIMENSIONS



STANDARD ORDERING CODE

Model	Length	Lens	Light Engine	Finish
ALP60	<b>49</b> 49.25"	<b>FR</b> Frosted	<b>See P.3</b>	<b>SI</b> Silver
	<b>84</b> 84"			<b>WH</b> White
	<b>98</b> 98.5"			<b>BK</b> Black
				<b>CU</b> Custom (powder-coat)

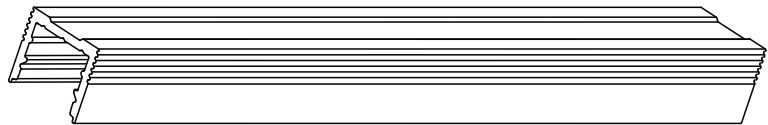
**NOTE:** Custom color finishes require powder coating. Allow 7 days lead time.

98" profile NOT available in black

## COMPONENTS AND ACCESSORIES

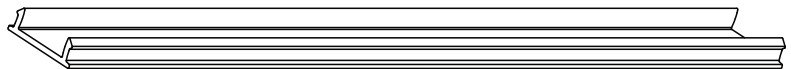
### ALP-60 | Aluminum Profile

**MOUNTING LENGTHS** Surface  
49.25" and 98.5"



### ALP-60LN | Lens Cover

**TYPE** Frosted (included)  
**LENGTHS** 49.25" and 98.5"



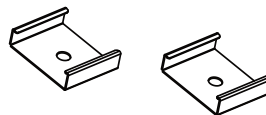
### ALP-60EC | End Cap

Two end caps included with every profile



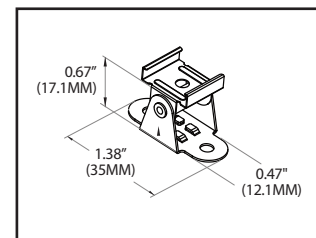
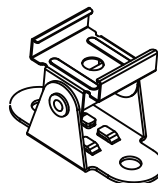
### ALP-60CL | Metal Mounting Clips

Two end caps included with every profile



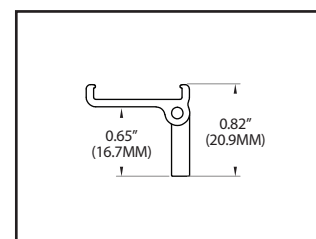
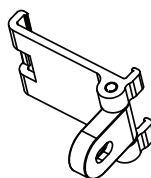
### ALP-60-BKT-ADJ | Adjustable Bracket

\* optional item (sold separately)



### ALP-60-ASB | Adjustable Bracket

\* optional item (sold separately)



COMPATIBLE LED STRIPS

Indoor	Outdoor	Indoor Color-changing
<b>LSM-15</b> 1.5W/FT, 120 Lumens	<b>LSMW-15</b> 1.5W/FT, 120 Lumens	<b>LSP-20-RGB</b> 2.2W/FT
<b>LSM-25</b> 2.2W/FT, 185 Lumens	<b>LSMW-30</b> 3.0W/FT, 250 Lumens	<b>LSP-50-RGB</b> 4.4W/FT
<b>LSM-30</b> 3.0W/FT, 250 Lumens		<b>LSP-50-RGB-DX</b> 4.4W/FT Digital
<b>LSM-35WD</b> 3.6W/FT, Auto Warm Dim		
<b>LSM-40HF</b> 4.0W/FT, 440 Lumens		
<b>LSM-45</b> 4.4W/FT, 370 Lumens		
<b>LSP-50</b> 4.4W/FT, 380 Lumens		
<b>LSM-55</b> 5.5W/FT, 500+ Lumens		