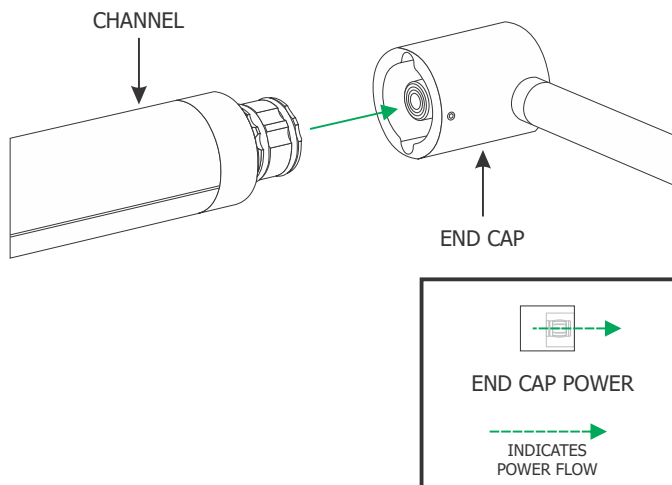
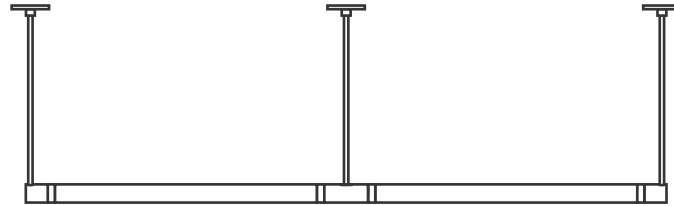


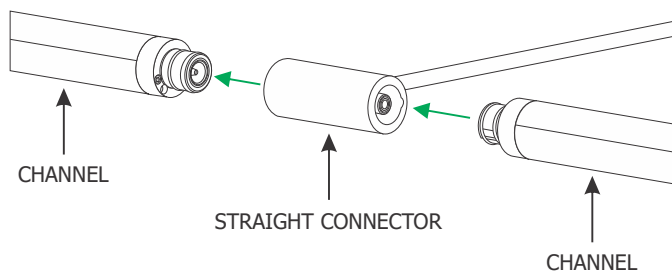
ALP125

INSTALLATION INSTRUCTIONS for ceiling/wall w/ 2" & 5" Canopy

CORE
ARCHITECTURAL
LIGHTING



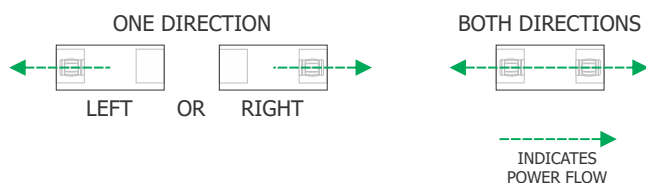
1: Align the channel with the stem end cap and slide into place.



2: The Straight Connector conducts power in one direction (left or right) or both directions.

3: Depending on the design, ensure the conductive end of the Straight Connector is facing the correct direction.

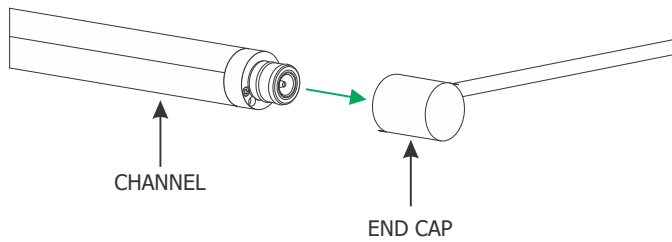
4: Snap the other end of the modular channel into the Straight Connector. Repeat these steps for all other Straight Connectors and remaining modular channels.



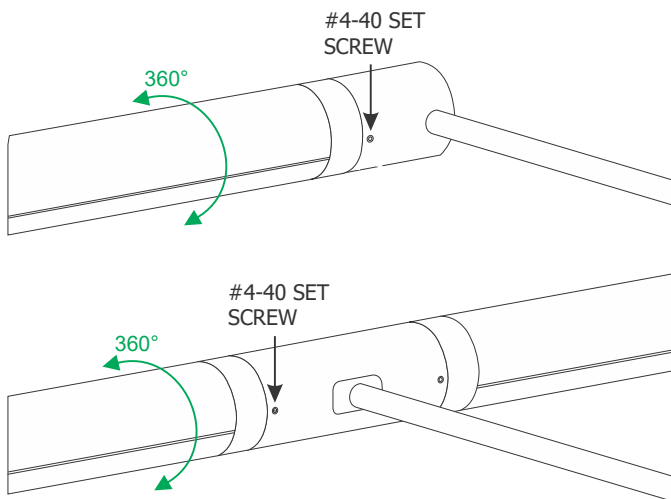
ALP125

INSTALLATION INSTRUCTIONS for ceiling/wall w/ 2" & 5" Canopy

CORE
ARCHITECTURAL
LIGHTING

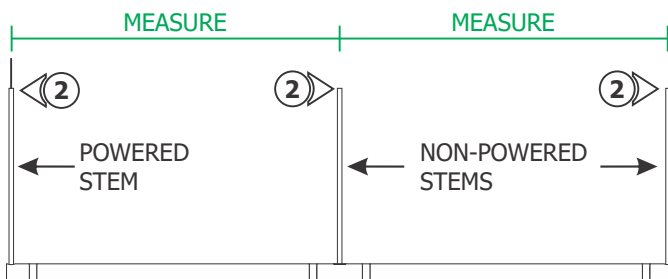


5: Snap the last channel to the last End Cap .



6: Rotate each channel to the desired angle.

7: Secure the channels by tightening the #4-40 set screws using a 0.05" Allen wrench.

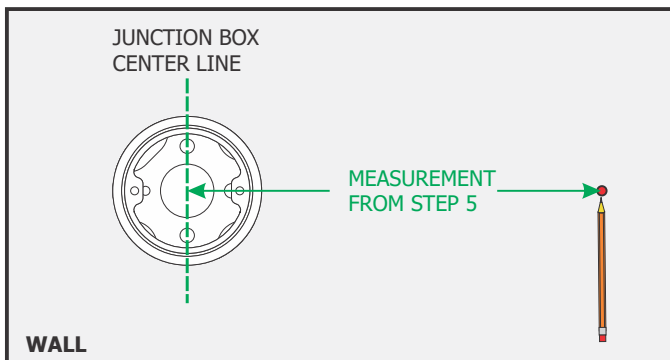


8: Measure the distance between the center of each stem.

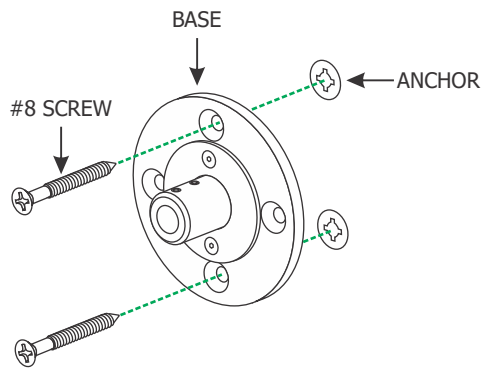
ALP125

INSTALLATION INSTRUCTIONS for ceiling/wall w/ 2" & 5" Canopy

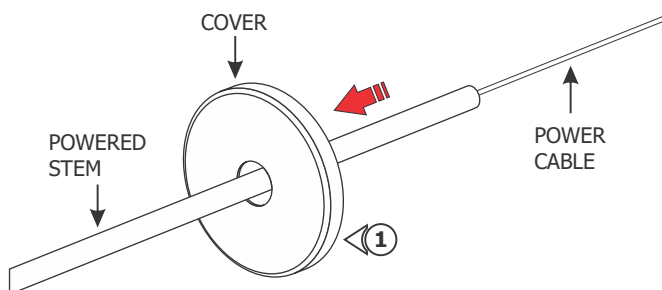
CORE
ARCHITECTURAL
LIGHTING



9: The stem containing the power cable should be aligned with the center of the junction box. Mark the location of the non powered stem on the wall/ceiling from the center for the junction box. Ensure the marked point is leveled horizontally with the center of the junction box.



10: Secure the base to the anchors with two provided screws

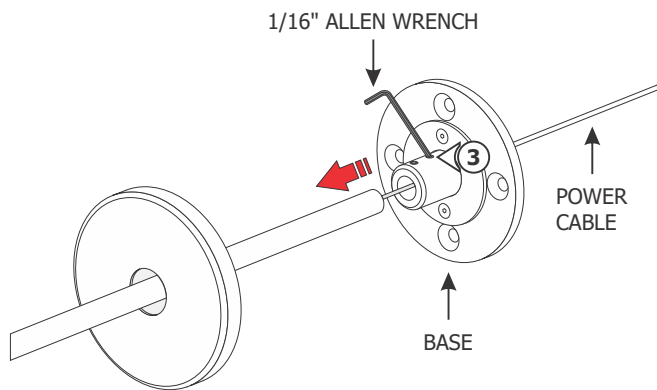


11: Slide the canopy cover (provided) over the powered stem.

ALP125

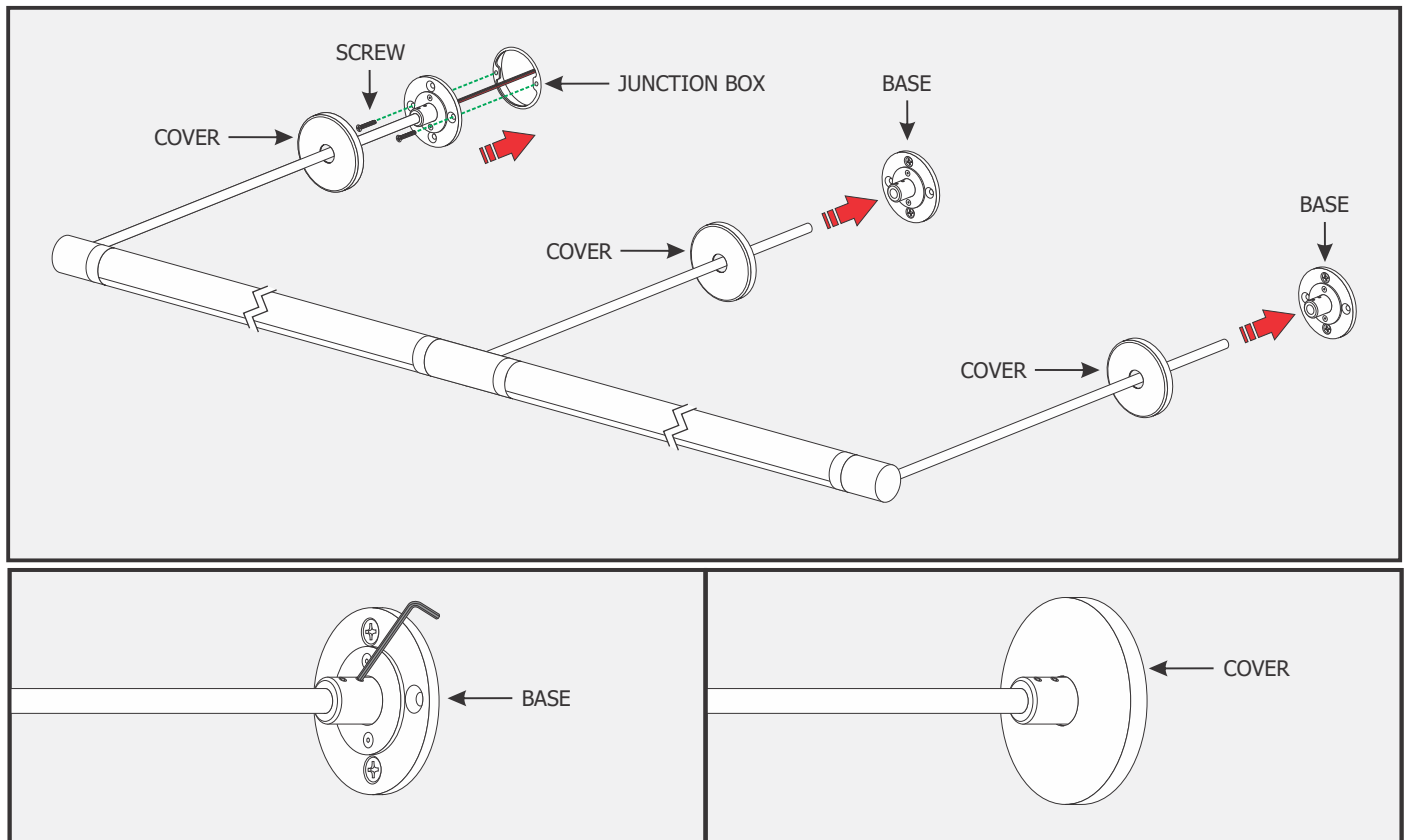
INSTALLATION INSTRUCTIONS for ceiling/wall w/ 2" & 5" Canopy

CORE
ARCHITECTURAL
LIGHTING



12: Feed the power cable coming out of the stem through the base.

13: Slide the base bushing completely onto the stem and secure it in place by tightening the #6-32 set screws with the provided 1/16" Allen wrench.



14: Slide the other canopy covers (provided) over the non-powered stems.

15: Place all wires and wire nut connections into the junction box and simultaneously align and insert the non-powered stems completely into the bases. Secure the stem by tightening the #6-32 set screws with the 1/16" Allen wrench.

16: Align the base of the powered stem with the junction box holes and secure it in place by tightening the two screws provided.

17: Slide the covers over the bases. The magnets on the back of the cover will keep the canopy in place.