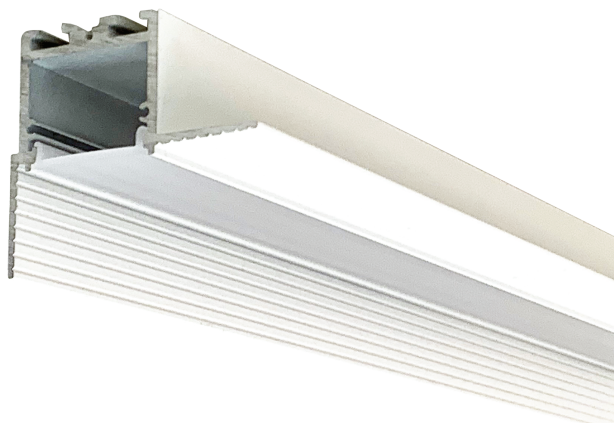


# ALP-2400TL 1" Wide Aperture Trimless Corner LED Profile

**CORE**  
LIGHTING

## SPECIFICATION SHEET

JOB NAME: \_\_\_\_\_  
LOCATION: \_\_\_\_\_  
QUOTE/REF#: \_\_\_\_\_



The **ALP-2400TL** is an Architectural Grade, LED extrusion profile designed for linear LED strips up to **24.6mm (0.97in)** wide and recessed applications. Made from high quality aluminum, these extrusions provide superior thermal management for higher wattage LED strips prolonging the overall lifespan of the lighting system. Manufactured with a patented frosted diffuser for maximum lumen output and a wider beam distribution.

### FEATURES

- Customizable
- 1" Aperture
- Accommodates LED strips up to **24.6mm (0.97in)**
- Suitable for corner installations / applications.
- Dissipates heat from LED, prolonging its lifetime

### SPECIFICATIONS

TYPE	Recessed / Corner mount
AVAILABLE LENGTHS	96"
FINISH	Matte white
LENS OPTIONS	Frosted
CHANNEL	ALP-2400TL
LENS	ALP-2400TL-LN (included)
END CAP	ALP-2400TL-EC (sold separately)

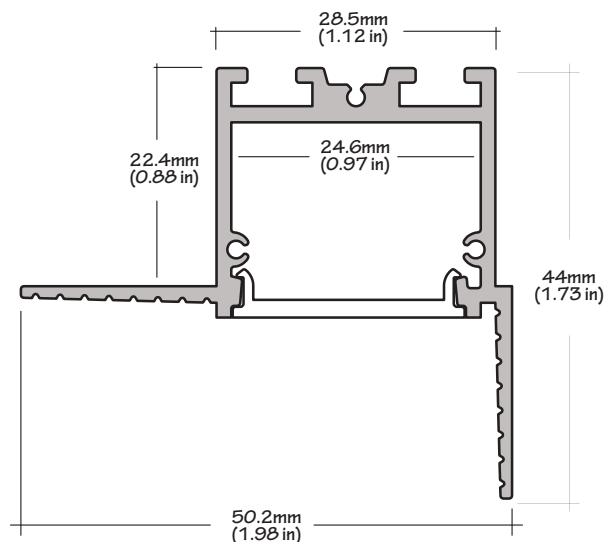
Compatible with LED strips up to **24.6mm (0.97in)** wide.

LED tape light sold separately.

Frosted lens diffuser included (1 with every channel)

End caps sold separately.

### DIMENSIONS



### ORDERING CODE

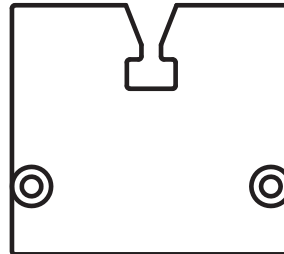
Model	Length	Lens
ALP-2400TL	96 - 96"	FR - Frosted



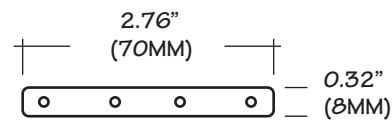
# ALP-2400TL 1" Wide Aperture Trimless Corner LED Profile

## COMPATIBLE ACCESSORIES

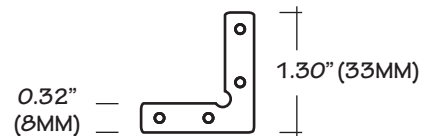
**ALP2400TL-EC** | END CAP  
(sold separately)



**ALP2000TL-STB** | STRAIGHT CONNECTOR  
(sold separately)



**ALP2000TL-INB** | INTERNAL CONNECTOR  
(sold separately)



**ALP2000TL-L90** | RIGHT ANGLE CONNECTOR  
(sold separately)

