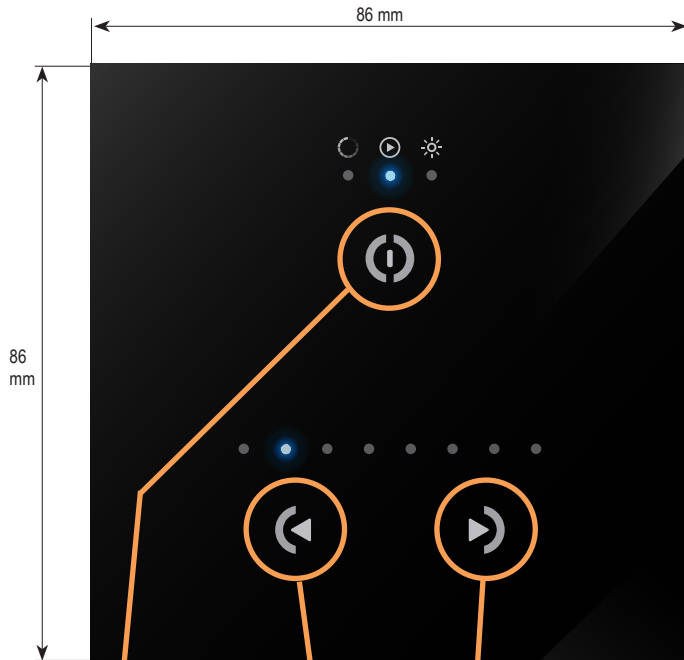
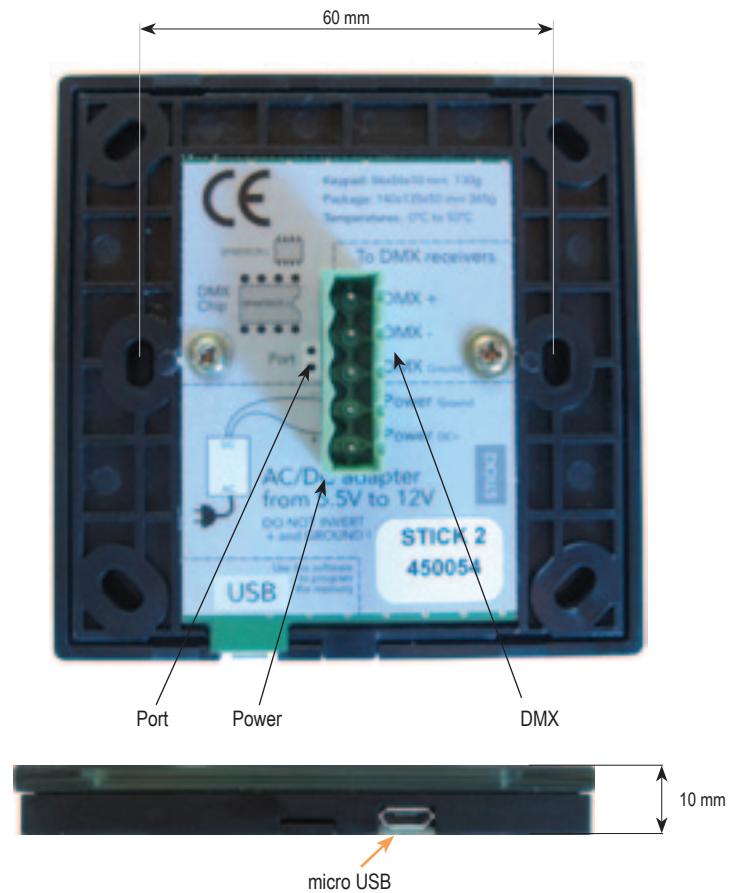


- DMX Stand Alone Controller (128 channels) with a glass face
- 3 touch sensitive buttons (on/off/mode, previous, next)
- Up to 24 dynamic or static scenes (8 first visualized by a led)
- Live setting of the intensity and color of a scene
- Programmable through the included USB cable and control software
- Compatible with any DMX fixture or DMX LED driver
- Ready to use (pre-loaded with 8 scenes and 42 RGB fixtures)
- Latest ARM CPU technology
- Customized design for OEM, wall mountable
- One dry contact trigger port on PCB



PREVIOUS **NEXT**

ON/OFF : Short touch - Easy switch on and off
CHANGE MODE : Touch and hold
 To switch between color, scene and dimmer mode



Port Power DMX

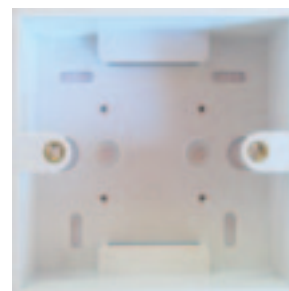
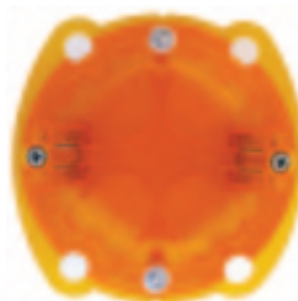
micro USB

SPECIFICATIONS		AVAILABLE MEMORY	
		Depending on the number of scenes used	
Package	Controller, cdrom, usb cable, connector block	CHANNELS	STEPS Using 8 scenes
OS requirement	Mac OSx 10.6/10.7/10.8 - Windows XP/VISTA/SEVEN/8 32/64 bits and USB 2.0	8	1691
Software	Easy Stand Alone, ESA2 (PC & Mac)	16	1011
Versions	Black glass design, White glass design	32	557
Connections	Power (2pins) DMX (3pins) Port (2 pins) Micro-usb	48	383
Power	from 5.5V to 12V DC(AC/DC adapter in option). Max 5.5v with USB	64	291
Certifications	EC, EMC, ROHS, ETL, UL (some are in process)	80	233
Keypad	86x86x10 mm 110g	96	195
Package	140x135x50 mm 365g	112	166
Use	Environnement IP20 Temperature 0°C to 50°C	128	145

EASY INSTALLATION

1. Mount an electrical box inside the wall

The S.T.I.C.K. controller can be installed in a standard 60mm electrical backbox.
You can insert the AC/DC adapter inside or outside the backbox.



2. Connect the wires

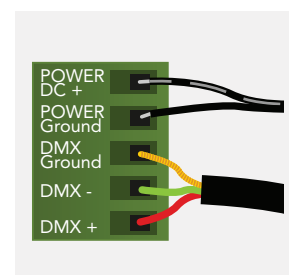
Use the green connector block

POWER+DMX

WITH THE CONNECTOR BLOCK

DMX: Connect the DMX cable to the lighting receivers (Leds, Dimmers, Fixtures..) (for XLR: 1=ground 2=dmx- 3=dmx+)

POWER: Connect the AC/DC adapter. Make sure not to invert the + and the ground.



3. Mount the interface on the wall

First, plug the green connector block

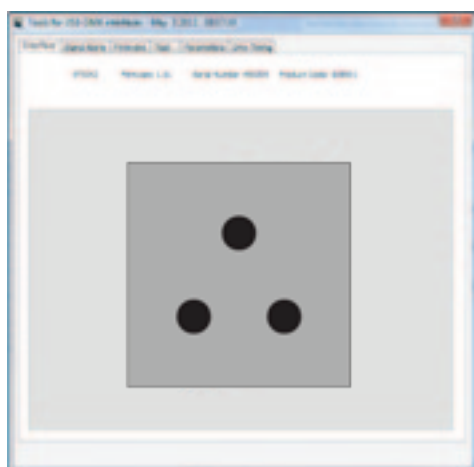
Secondly, mount the back side of the interface on the wall with 2 or more screws

Then, close the unit by clipping the front panel onto the back plate

Wait 30 seconds for the touch sensitivity to adjust

SOFTWARE

TOOLS.EXE to set parameters



ESA2 (PC & Mac) to make lighting programs

