

SPECIFICATION SHEET

JOB NAME: _____
 LOCATION: _____
 QUOTE/REF#: _____






DLC-310 is a 5 Watt LED low profile, recessed downlights powered by a single high-power LED chip. These high performance cabinet lights are great in applications where high levels of light are desired. Providing 370 lumens in 3000K, makes this LED downlight a great choice for many low profile applications.

FEATURES

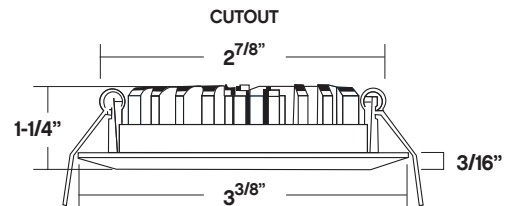
- 5-Watt High Output LED
- Rated Life: 50,000 Hours
- Dimmable
- 370 Lumens
- 3000K – Warm White / 4000K - Cool White
- Energy savings of 85% compared to halogen
- Great for displays, cabinets and showcases
- Driver included

SPECIFICATIONS

INPUT VOLTAGE	500mA Constant Current
POWER CONSUMPTION	5.0W
LUMEN OUTPUT	370 Lumens
BEAM ANGLE	38°
CCT	3000K
CRI	90+
DIMMING	TRIAC Dimming
MOUNTING	Recessed mount
CUTOUT	2 ⁷ / ₈ "
OPERATING TEMPERATURE	-4 ~ 122°F (-20 ~ 50°C)
AMBIENT TEMPERATURE	-4 ~ 176°F (-20 ~ 80°C)
LUMEN MAINTENANCE	50,000 hrs.
CONNECTION	Cord with quick connector
WARRANTY	3-Year Limited
DRIVER	PSC-9W-500DM (included with each fixture)

	FINISH	CRI	LUMEN
	BK	90+	370
	WH	90+	370
	BN	90+	370

DIMENSIONS



ORDERING GUIDE EX: DLC310-30K-B

DLC-310		
MODEL	COLOR TEMP	FINISH
	30K - 3000K 40K - 4000K	BK - Black WH - White BN - Brushed Nickel

COMPATIBLE CONSTANT CURRENT DRIVERS

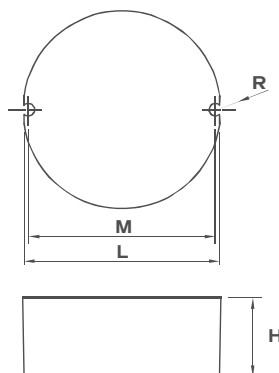
PSC-9W-500DM | Constant Current Dimming Driver

DRIVER SPECIFICATIONS

INPUT VOLTAGE RANGE	120V AC
INPUT FREQUENCY	47 ~ 63 Hz
INPUT POWER	11.5V AC Max
INPUT CURRENT	130mA Max
OUTPUT VOLTAGE RANGE	13~18.5V DC
OUTPUT CURRENT RANGE	500~525 mA
RATED OUTPUT POWER	6.5W ~ 9.25W
THD	20% @ 110V Max Load
EFFICIENCY	78% @ Full Load 110V AC
STANDBY TIME	0.5
RISE TIME	500ms
PROTECTION	Over Voltage Auto recovery
OPERATING TEMPERATURE	-20°C ~ 60°C
OPERATING HUMIDITY	10 ~ 90%
STORAGE TEMPERATURE	-40° ~ 85°C
DIMMING	TRIAC



DIMENSIONS



L : 55 mm H : 22 mm
M : 52 mm R : 1.7 mm

DIMENSIONS

