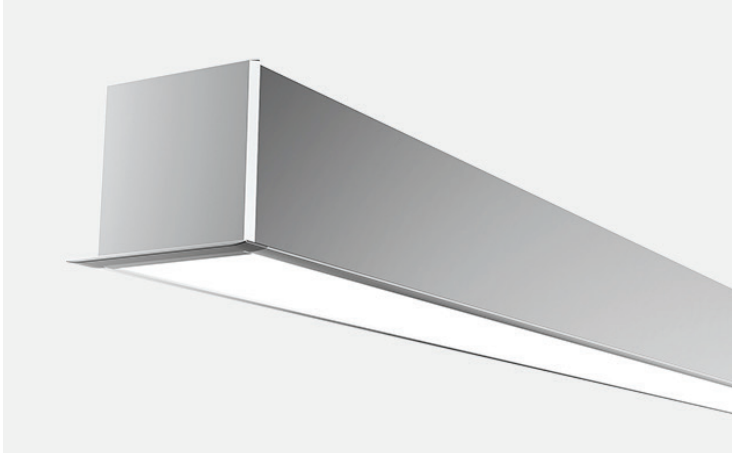


ALP-340R

Recessed Mount LED Profile



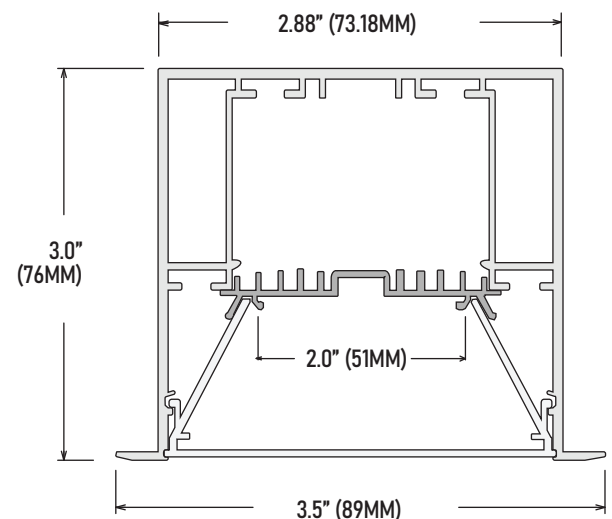
The ALP-340R is a recessed, Architectural Grade LED extrusion profile designed for recessed linear LED applications. Made from high quality anodized aluminum, these fixtures provide superior thermal management for higher wattage LED strips and prolong the overall lifetime of your lighting system. The ALP-340R is manufactured with a patented frosted diffuser for maximum lumen output and wide beam distribution. The ALP-340R also helps protect LED's from dust and other undesirable elements, which can shorten the lifetime of the LED.

SPECIFICATIONS

TYPE	Recessed mount
AVAILABLE LENGTHS	49.25" and 98.5"
FINISH	Anodized Silver
LENS OPTIONS	Frosted
PROFILE	ALP-340R
LENS	ALP-340-LN
END CAP	ALP-340-EC
L-CONNECTOR (OUTSIDE)	ALP-340-L90W
L-CONNECTOR (INSIDE)	ALP-340-L90N
L-CONNECTOR (SIDE)	ALP-340-L90
T-CONNECTOR	ALP-340-T90
X-CONNECTOR	ALP-340-X90
SEAMLESS CONNECTOR	ALP-SC
N-TYPE CLIP	ALP-340-RE

FEATURES

- Customizable
- Ideal for recessed applications
- optional T, L and X connectors for corners and angles
- Durable anodized aluminum
- Protects LED systems from dust and other elements
- Dissipates heat from LED, prolonging its lifetime



ALP-340R

Recessed Mount LED Profile

STANDARD ORDERING GUIDE

Model	Channel Length	Lens Option	Mounting Option
ALP-340R	49 49.25 inches	FR Frosted	RES Recessed
	98 98.5 inches		
	CC Custom cut		

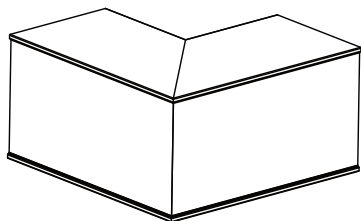
NOTES:

Custom color finishes require powder coating. (Additional fees apply)
Allow 7 days lead time.

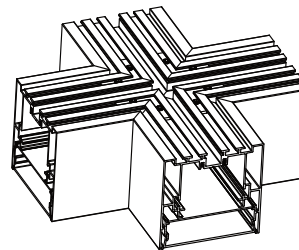
ALP-340R

Recessed Mount LED Profile

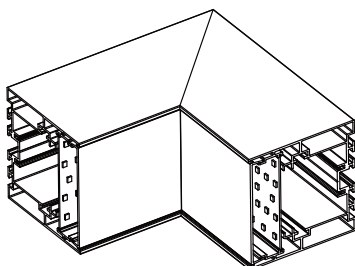
ACCESSORIES



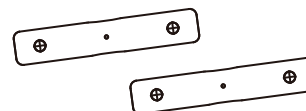
ALP-340R-L90W
L connector (OUTSIDE)



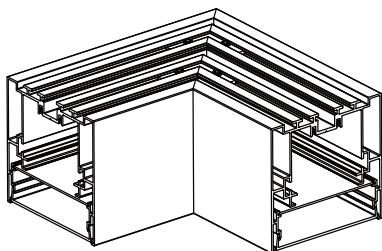
ALP-340R-X90
X connector



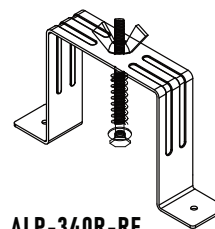
ALP-340R-L90N
L connector (INSIDE)



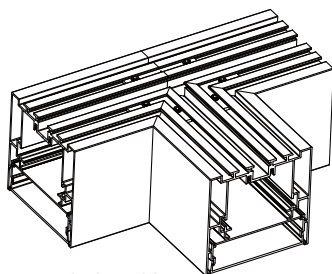
ALP-SC
Seamless connector



ALP-340R-L90
L connector (SIDE)



ALP-340R-RE
N type clip



ALP-340R-T90
T connector

ALP-340R

Recessed Mount LED Profile

MOUNTING OPTIONS

